

Key Features

Reporter Version 10, in addition to broader product coverage includes:

- Reporter Appliance and Virtual Appliance
- Integration with Management Center
- Comprehensive Security and Web Activity Information
- Role-Based Access
- Customized Access

Symantec Reporter

Complete Web Visibility and Control

Overview

Symantec Reporter provides scalable log collection and storage as an appliance or virtual appliance for a number of Symantec™ products including ProxySG, Advanced Secure Gateway, Web Security Service, Content Analysis System, and Reverse Proxy and Web Application Firewall deployments of ProxySG.

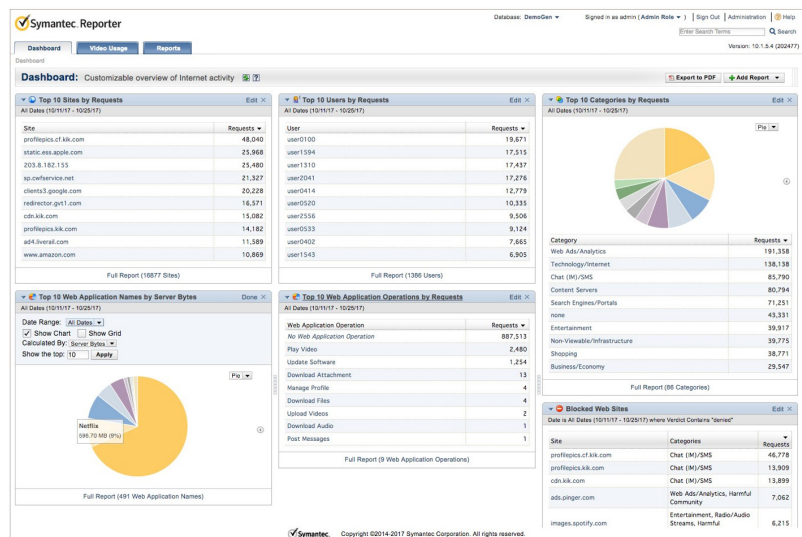
Reporter creates intuitive reports for security specialists, department managers, HR managers, and network administrators who need visibility into all Web-related user activity.

Reporter Appliance and Virtual Appliance – Simplify Procurement and Deployment

The new RP-S500 is a highly scalable log collection and reporting appliance with 24-TB of hard disk capacity, enabling roughly 30 billion log lines of storage. Appliance packaging simplifies the purchase process for operations groups who find it difficult to provision general server capacity.

For software-defined networking and private cloud environments, the RP-V series of ESXi-based virtual appliances replaces the software installation of past Reporter versions.

Figure 1: The Reporter dashboard is an intuitive role-based, interactive view into Web activity. With Symantec's new Web application controls, Reporter provides visibility into social networking usage.



Integration with Management Center

Reporter version 10 delivers the same powerful reporting on Web usage as past Reporter versions, and is increasingly valued as a dedicated log collection and storage tool with Symantec Management Center integration. Management Center combines reporting with policy management, and includes new UI technology to simplify creation of dashboards and advanced workflows.

Working together, the two products deliver even greater capabilities such as Unified Threat Reports that are derived from Content Analysis and Malware Analysis data. Other popular reports include CASB Risk Reports and Advanced Threat Dashboards that include ProxySG, Content Analysis, Advanced Secure Gateway, and Malware Analysis.

Comprehensive Security and Web Activity Information

Real-Time Dashboard

Customizable, role-based dashboards deliver pertinent, personalized at-a-glance views of current status information, as well as, recent or long term trends related to Web activity and security events.

Intuitive Navigation

FLEX based GUI enables administrators to easily drill-down into details, related information or other specifics, to support forensic investigation of an event or to analyze trends that may influence policy decisions.

Flexible Reporting

Powerful pre-defined reports and straightforward custom report creation highlights the following Web activity information:

- Spyware and other Malware
- Video Usage
- Web Application Usage
- Search Term Usage
- Filtering Categories (URLs)
- Web Content
- Sessions
- Traffic Profiles
- Users and Authentication
- And more

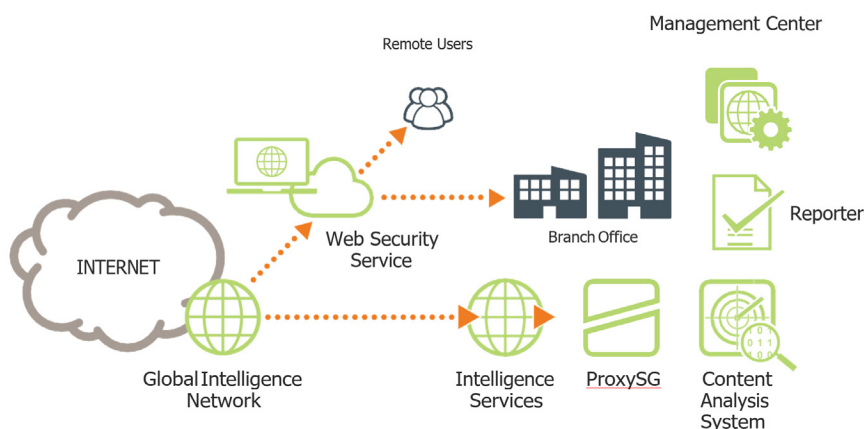
Threat Protection Reporting

Interpret current or historical Web activity by correlating the data to risk groups such as business usage, legal liability, bandwidth loss, security risk and others.

Root Cause Visibility

Correlate events with the activities preceding them. Review the surfing history for systems that now show signs of a malware infection, evaluate overall Web activity at times of peak bandwidth usage, and examine search terms used by individuals who attempt to visit otherwise restricted sites.

Figure 2: Reporter provides control and visibility for Web gateway and remote users.



Role-Based Access

Reporter supports custom, role-based dashboards and reports for thousands of administrators, up to 50 concurrently, and maintains them independently to provide every user with a UI tailored for their role.

Security View

Security personnel must track user activity that is potentially dangerous, quickly identify users with malicious content, including spyware, and identify trends that may require policy changes.

Network Administrator View

Network administrators can measure Web traffic performance, trends, errors, bandwidth impact, streaming traffic levels, and more.

Technical reports include information for response codes, processing actions and operations, upload of MIME types, Web browsers, and operating systems.

HR View

HR wants to know when and where users are going on the Internet. Filtering, content and user reports are key to help these personnel control policy violations to prevent abuse and protect liability.

Management View

Managers need access to data related to the Web activity of their direct reports to manage productivity and achieve business objectives.

Anonymized View

Reporter also offers the ability to create reports with anonymized user data, when both privacy and data access is required.

Customized Access

Reporter provides easy access to relevant information to the full range of individuals who need to know what is happening on their network, their gateway, and among their employees using the Web.

Web API

A Web API provides auditors and third party management consoles access to Reporter information in PDF, JSON, and CSV (Microsoft Excel compatible) formats.

LDAP and Active Directory Integration

Role-based permissions are easily managed through integration with LDAP and Active Directory with the following options to automatically empower all stakeholders:

- Managers to view data about direct reports.
- Individuals to view their own data access can also be determined by geography, function, product, departments, or other necessary organizational methods.

Administrator Auditing

Reporter includes auditing of the access and activity history of each administrator, mitigating concerns about potential abuse.

Figure 4: Reporter dashboards show activity history.

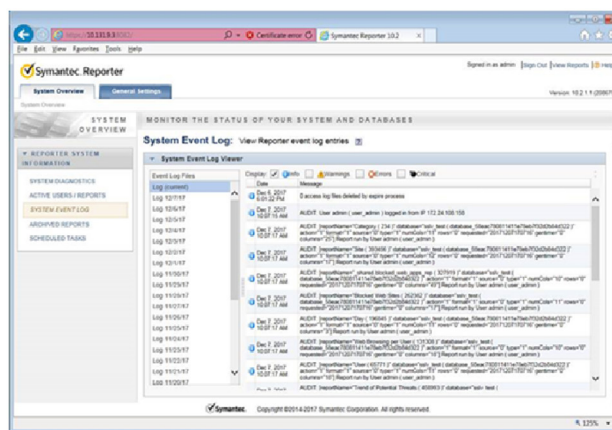


Figure 3: Reporter dashboards can be easily customized for different roles like security.

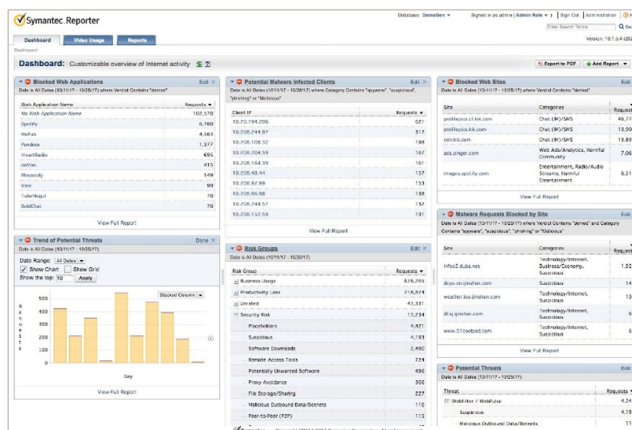


Table 1: System Information

Reporter S500		RP S500-20	
System			
Disk Drives		24 × 1 TB @ 7.2K	
RAM		256 GB (16 GB × 16)	
Onboard Ports ¹		(1) 1000 Base-T Copper, System Management Port (1) 1000 Base-T Copper, BMC Management Port	
Optional NICs ²		4 × 10/100/1000 Base-T (Copper with bypass capability) 4 × 1-Gb E Fiber-SX (with bypass capability, full height slot only) 4 × 1-Gb E Fiber LX (with bypass capability, full height slot only) 2 × 10-Gb Base-T (Copper with bypass capability) 2 × 10-Gb Base-T (Copper non-bypass) – factory installed prior to shipment 2 × 10-Gb Fiber (SR with bypass capability) 2 × 10-Gb Fiber (LR with bypass capability)	
Available Slots		2 full height/4 half height	
Power Supplies		2	
¹ BMC ports are currently disabled.			
² Supported with Reporter release 10.1.5.1 and later.			

Table 2: System Properties

Physical Properties	
Dimensions and Weight	
Dimensions (L × W × H)	710 mm × 433.3 mm × 87.2 mm (27.95 in. × 17.05 in. × 3.43 in.) (chassis only) 812.8 mm × 433.4 mm × 87.2 mm (32 in. × 17.06 in. × 3.43 in.) (chassis with extensions)
Form Factor	2 RU height
Weight (maximum)	Approx. 30 kg (66.12 lbs) ±5%
Operating Environment	
Power	Dual redundant and hot swappable power supplies, AC power 100V to 240V, 50 Hz to 60 Hz, 12A to 5A
Total Output Power	1100W
Thermal Rating	Typical: 2598.42 BTU/Hr, Max: 3751 BTU/Hr
Optional DC Power	Input voltage range: 40 VDC to 72 VDC Input max current: 30A Total output power: 1100W
Temperature	5°C to 40°C (41°F to 104°F) at sea level
Humidity	20% to 80% relative humidity, non-condensing
Altitude	Up to 3048m (10,000 ft)

Table 3: Regulatory Information

Regulatory		
Regulations	Safety	Electromagnetic Compliance (EMC)
International	CB - IEC60950-1, Second Edition	CISPR22, Class A; CISPR24
USA	NRTL - UL60950-1, Second Edition	FCC part 15, Class A
Canada	SCC - CSA-22.2, No.60950-1, Second Edition	ICES-003, Class A
European Union (CE)	CE - EN60950-1, Second Edition	EN55022, Class A; EN55024; EN61000-3-2; EN61000-3-3
Japan	—	VCCI V-3, Class A
Mexico	NOM-019-SCFI by NRTL Declaration	—
Argentina	S Mark - IEC 60950-1	—
Taiwan	BSMI - CNS-14336-1	BSMI - CNS13438, Class A
China	CCC - GB4943.1	CCC - GB9254; GB17625
Australia/New Zealand	AS/NZS 60950-1, Second Edition	AS/ZNS-CISPR22
Korea	—	KC - RRA, Class A
Russia	CU - IEC 60950-1	GOST-R 51318.22, Class A; 51318.24; 51317.3.2; 51317.3.3
Environmental	RoHS-Directive 2011/65/EU, REACH-Regulation No 1907/2006	
Product Warranty	Limited, non-transferable hardware warranty for a period of one (1) year from date of shipment. Symantec Hardware Support contracts available for 24/7 software support with options for hardware support.	
Government Certifications	For further government certification information please contact GTSO-Security-Operations.pdl@broadcom.com .	
More Information	Contact GTSO-Security-Operations.pdl@broadcom.com for specific regulatory compliance certification questions and support.	

Table 4: Data Retention Periods

Product	Retention Period
Reporter On-premise - Virtual Appliance	2 TB, 4 TB, or 8 TB storage options
Reporter On-premise - Appliance	Approximately 11 TB of storage
Hosted Reporting Service	1 year
Web Security Standard Reporting	100 days