

NetMaster[®] Network Intelligence

Key Benefits

- **Improve security awareness** with real-time notification of network security events and secured management of network connections.
- **Enhance system performance** by proactively identifying network issues and reducing mean time to repair using machine learning.
- **Reduce cost** by lowering consumption of I/O and CPU resources.
- **Increase visibility** with centralized monitoring and management of network resources across your entire mainframe environment.

Key Features

- **Web Portal:** A modern network management experience, including dashboards, reports, and tools that speed root cause analysis and remediation of network problems.
- **Network Security Insights:** Gain a deeper understanding of the encryption status of your network, both historically and in real time. Know what is secured and what is not, to aid in your compliance needs.
- **Advanced Tracing with SmartTrace:** Powerful diagnostic tool allows for fast and comprehensive packet tracing, critical for diagnosing and remediating network connectivity and performance issues.
- **File Transfer Management:** Increase the reliability of transfers across multiple solutions and systems from a single view. Automate notification and resolution of problems for scheduled and unscheduled file transfers across your network.

Overview

NetMaster[®] Network Intelligence leverages machine learning to enable a proactive approach to network management. Through automated network monitoring and robust incident analysis tools, you can identify and resolve network issues before they affect your business operations. NetMaster simplifies routine network management tasks such as monitoring devices, events, and connections, to provide a clear picture of overall network health.

NetMaster provides advanced thresholding and visualization of historical data to proactively identify anomalous events. SmartTrace, a built-in, real-time packet tracing tool, helps you quickly troubleshoot network connectivity problems. NetMaster also allows you to automate and monitor file transfers across your network, ensuring the timely delivery of files that support your business critical applications. With NetMaster you can view your network from a business service perspective, ensuring that you meet service-level objectives. You can also take advantage of zIIP processors to reduce processing costs.

Business Challenge

Companies measure success according to how well they meet the needs of their customers. In today's highly competitive and globally connected environment, data is both the foundation of many service offerings and a key decision making tool. The network is the conduit for that data. But, as businesses expand, so do the networks that support them. And, as networks become larger and more complex, it is increasingly difficult to identify and diagnose issues, which can lead to service failures, potential customer impacts, and even regulatory consequences.

Digital transformation and the continued extension of critical applications to the web and to mobile devices have led to increased mainframe workloads, and an expanded focus on network performance and resilience. At the same time, changes to the mainframe workforce often require system administrators and IT operations generalists to take on more specialized network management roles.

Growing complexity and shifting workforce demographics increase the need for easy-to-use, automated tools that can assist entire operations teams, from novice performance analysts to network experts. NetMaster helps teams proactively anticipate and resolve network problems and plan for future demands through the following:

- Advanced monitoring of TCP/IP and SNA network components
- Automated metric baselining
- Machine learning and anomaly detection
- Open and secure API access to critical network data
- File transmission monitoring and SLA management

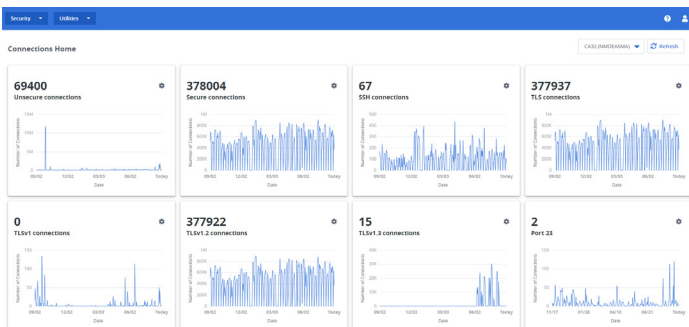
Solution Overview

With a feature-rich design to support your growing network, NetMaster Network Intelligence helps you meet and exceed service levels, maintain high availability, and improve the user experience. The comprehensive solution enables you to minimize outages and maximize network performance in a more cost-effective manner. The modern web portal provides a collaborative environment for network administrators, operators, and system programmers to proactively monitor network activity in real-time and identify problems before they impact service delivery.

NetMaster provides the information you need to anticipate network issues sooner, analyze and correct network problems faster, automate corrective action, and also plan for future network growth. Advanced diagnostics, including real-time notification and analysis of network security events, helps protect your network from vulnerabilities and improves security awareness.

NetMaster also provides real-time, session-level information and detailed diagnostics to proactively manage SNA, IBM's proprietary network architecture.

NetMaster Web Portal: Quickly visualize the state of your network, and then drill down into the details for deeper analysis



Critical Differentiators

NetMaster Network Intelligence provides the following advantages:

- **Advanced alerting and historical diagnostics** provide proactive notification of future out of norm events, leveraging predictive analytics and machine learning capabilities, as well as historical analysis for contextual awareness.
- **Deep integration with z/OS system data** enhances and enriches network monitoring data, pulling real-time data from z/OS Communication Server/NMI, including key SMF and SYSLOG.D data.
- **Integration with Broadcom mainframe software solutions** provides key network data to other domains, allowing other teams to quickly and more easily identify issues which are not network related.
- **Continuous enhancements** to network management capabilities address ongoing changes to standards and new requirements as mainframe network systems continue to evolve to meet today's business needs.
- **Embedded operational intelligence** combined with advanced network monitoring and management provide network situational awareness and the ability to quickly identify issues. Deep analysis of root cause and rapid remediation help prevent network issues before they become failures to meet business commitments and SLOs.

For more information, please visit: broadcom.com/netmaster