

ESP Workload Automation Intelligence

Key Benefits

- **Reduce SLA breaches:** Using predictive analytics, detect SLA breaches as early as possible to minimize business impact.
- **Manage disparate workloads across multiple platforms:** Reduce the cost and complexity of managing mission critical workloads using distributed agents to manage database, SAP, Hadoop, web services, and other workloads across multiple platforms.
- **Valuable insights across multiple schedulers to drive improvements:** Increases IT efficiency and provides rapid return on investment.
- **Open and secure APIs:** Enables integration with applications such as Service Management Systems or in-house applications.

Key Features

- **Multi-platform scheduling** to manage and visualize a business process end-to-end across platforms from a central point of control.
- **Drive improvements** in IT operations with AAI. Critical workload data can be a source of business insights to enable improvements and meet SLAs.
- **Dynamic critical path**, automatic alerting, notification, and reporting enable management by exception.
- **Advanced analysis, simulation, and visualization** make it easy to understand the business impact of critical errors and to facilitate improved communication and coordination to prioritize and respond to potential problems.
- **Seamless application integration** allows all business applications to be managed with reliability and flexibility, and to be executed in sync with workflows running in the rest of the enterprise.
- **Centralized remote agent management** minimizes the time, effort, and platform skills to monitor and administer distributed agents.

At a Glance

ESP Workload Automation Intelligence simplifies cross-enterprise workload automation by providing you with an enterprise grade workload scheduler hosted on the z/OS platform. ESP Workload Automation Intelligence helps you define, standardize, monitor, control, and manage application workloads across z/OS, Windows, Linux, hybrid, and multi-cloud environments. Advanced features enable dynamic triggers, preemptive problem correction, and pro-active environmental cleanup. A user-friendly interface helps you manage all applications and jobs by exception and quickly assess the downstream business impact. Together with Automation Analytics & Intelligence (AAI) using predictive analytics, you will gain insights into your workload environment, reduce SLA breaches and operating expenses while managing complex workloads.

Business Challenges

As businesses continue on their digital transformation journey, a number of challenges become apparent when managing complex workloads across the enterprise:

- **SLA breaches:** When applications do not start or end on time, the impact to the business may not be obvious. Potential SLA breaches can be costly, and need to be detected as early as possible to enable resolution prior to business impact.
- **Lack of visibility:** Many organizations struggle to manage complex, mission critical workloads across multiple schedulers, platforms, and applications. Potential failure points may not be visible and could risk improper documentation for regulatory compliance. All these issues compromise the ability to deliver quality services.
- **Insufficient data insights:** Limited insights into how jobs are perform and evolve over time can result in a negative impact to your business. This performance data is critical when setting a benchmark for ongoing workload performance.
- **Hybrid environments:** A tool that can orchestrate the automation of complex mainframe, distributed, and cloud-based applications is essential to enabling applications to run in an optimal location, maximizing business flexibility.

Solution Overview

ESP Workload Automation Intelligence provides application developers with the ability to manage, orchestrate, and visualize application workloads from end to end across platforms and technologies, from a central point of control, in a highly available environment. Using machine learning and predictive analytics, ESP can help detect and avoid SLA breaches. Leveraging the analytics and historical performance data provides the ability to gain unprecedented insights into the workload processes that are integral to your business.

Critical Differentiators

ESP Workload Automation Intelligence includes the following key differentiators:

- **Intuitive free-form schedule language** minimizes the need to maintain calendars.
- **Integrated predictive analytics to analyze** real-time and historical data and gain valuable insights to drive improvements.
- **Throughput optimization processes workloads end-to-end** much faster than competitive tools which speeds up the processing of business data.
- **Uninterrupted availability** and business recoverability. A local/remote option monitors itself and sends notifications for unrecoverable problems to eliminate catastrophic events interrupting scheduled service.
- **Workload lifecycle management** has the ability to version, test, and maintain workload definitions though integration with Endeavor® mainframe software so application teams can work collaboratively.
- **Extensive application support** allows IT to extend capabilities for automated management of business application workloads such as SAP, PeopleSoft, Oracle E-Business, and SOA-based applications. The result is lower operating costs and increased cross-enterprise visibility.

Related Products and Solutions

- Automation Analytics & Intelligence
- Workload Automation Agents
- Workload Automation Agent Manager

Figure 1: Use Dashboards to Monitor Workloads

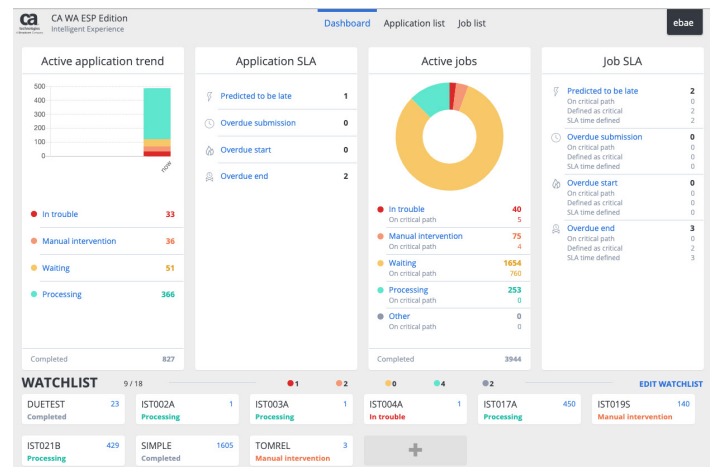
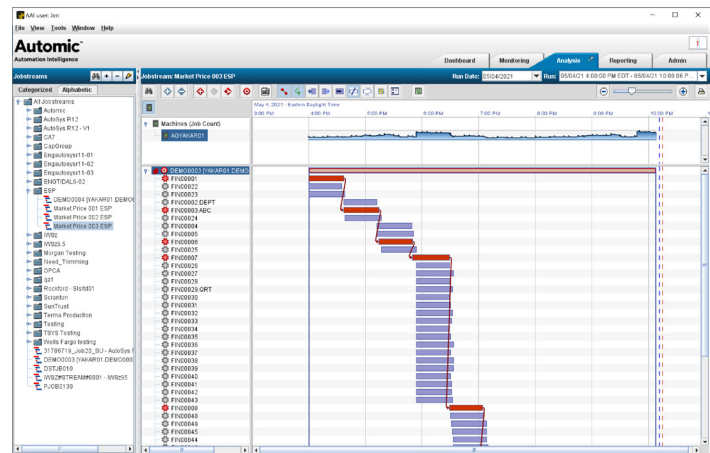


Figure 2: Monitor, Analyze, and Report on Key Workloads to Meet SLAs



For more information, please visit: broadcom.com/workload-automation-esp-edition