

CA SymDump® System, CA SymDump Batch, CA SymDump for CICS

At A Glance

CA SymDump is a fault management tool for IBM® z/OS® systems that provides critical, comprehensive ABEND information for both test and production environments. Once installed and configured with appropriate environmental information, CA SymDump automatically captures diagnostics for abnormally terminated jobs and transforms the information to help make problem diagnosis faster. Easy-to-read detailed reports, formatted storage areas and formatted control blocks for IBM z/OS, IBM CICS®, IBM MQSeries®, JES2, IBM Db2®, IBM IMS™ and CA Datacom®/DB applications help developers and systems programmers quickly identify and subsequently correct errors.

KEY BENEFITS

- **Condensed, clear-cut diagnostic information:** Helps developers and systems programmers focus more quickly on the area of code causing the problem.
- **Helps limit application outages:** Faster error resolution facilitates minimal downtime with increased system and application availability.
- **Efficient resource utilization:** Sophisticated technology for controlled dump capture and duplicate dump suppression, combined with advanced data compression algorithms, results in nominal storage requirements.

KEY FEATURES

- **Straightforward diagnostic reports.** Helps determine where and understand why the application ABEND or system failure occurred.
- **Integrated CA Endevor® Software Change Manager and CA File Master™ Plus functions.** Provides on-demand location and formatting of symbolics using the secured source-of-record, and directly initiates fully qualified file browse or edit sessions.
- **Tree-structured storage areas and control blocks.** Facilitates prompt selection and viewing of formatted storage areas and control blocks.
- **Customized displays and KEEP WINDOW.** Provides quick redisplay and review of captured dumps and dump viewing areas.
- **Event creation and notification.** Helps expedite communication to the responsible application support staff through the use of automation.

Business Challenges

Software outages happen. Some have more impact than others. As IT organizations propagate and continue to invest in applications that span mobile-to-mainframe environments, having proven, reliable tools that facilitate a quick recovery becomes key to retaining and growing business. While software serves to define competitive advantage, maintaining it becomes increasingly critical to achieving the superior applications necessary for corporate success.

Time-to-diagnosis is vital. Capturing and reporting on both system and application errors occurring within the production and test environments is an important and time-consuming phase of maintaining critical mainframe applications. CA SymDump intercepts errors and helps developers and systems programmers resolve issues promptly and efficiently. By highlighting the source statement that triggered the application ABEND, identifying the values of data items and providing formatted displays of trace information, CA SymDump helps to more efficiently assess and resolve system and application outages.

Solution Overview

CA SymDump automatically captures and reports on system and application failures, providing data to efficiently identify and subsequently help to resolve errors.

Whether in testing or production, concise reports assist in diagnosing abnormally terminated application programs. The ABEND intercept capability serves as input to producing high-quality reports that facilitate root-cause diagnosis. The choice of traditional or Eclipse-based graphical interfaces appeals to application and system programmers with various experience levels.

CA SymDump helps to focus problem diagnosis and resolve issues promptly, shortening development cycles, reducing production outages and improving the ability to swiftly maintain critical business applications that span mobile, cloud, Web and mainframe environments.

Critical Differentiators

In addition to its comprehensive set of debugging capabilities, CA SymDump System offers key unique features, including:

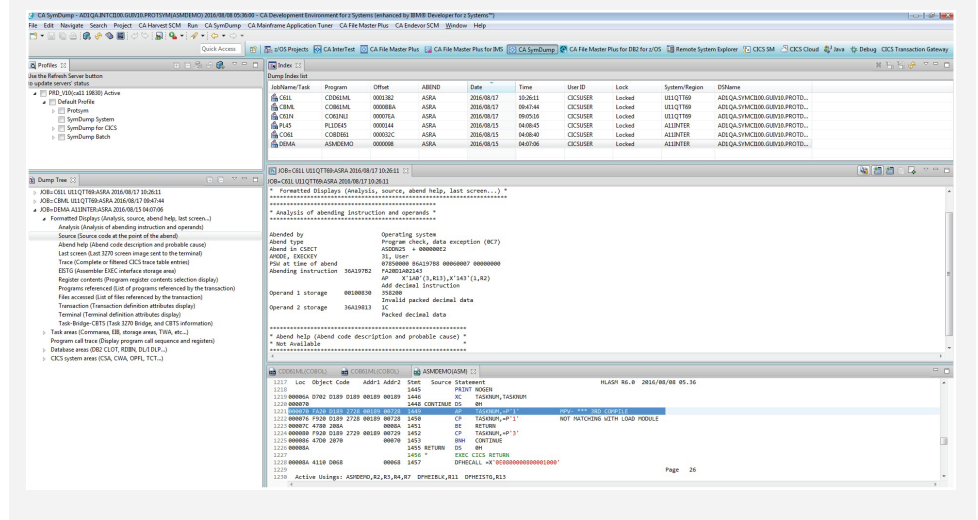
Integrated testing suite

CA SymDump System is an integral component of the CA suite of integrated testing and fault analysis tools, which share a common look and feel that helps developers easily switch back and forth between CICS and batch debugging or initiate a debugging session when a fault is detected.

User-friendly Eclipse graphical interface

Common Eclipse-based graphical interfaces help a new generation of developers assume responsibility for mainframe applications while enabling seasoned developers to work more productively.

The Eclipse-based GUI is designed to be easy to use by the traditional mainframe user and the new generation of mainframe programmers.



Related Products/Solutions

- **CA InterTest™ Batch** provides comprehensive interactive debugging for z/OS batch programs
- **CA InterTest™ for CICS** provides comprehensive interactive debugging for CICS programs
- **CA Endevor® Software Change Manager** secures software, tracks changes and enables mainframe DevOps
- **CA Development Environment for z Systems** enables app development with modern methods, toolsets and coding languages

Supported Environments

Please visit the [Mainframe Compatibilities](#) page for more information on supported environments including:

- IBM z/OS®
- IBM CICS® Transaction Server

For more information, please visit ca.com/mainframe-testing

CA Technologies (NASDAQ: CA) creates software that fuels transformation for companies and enables them to seize the opportunities of the application economy. Software is at the heart of every business, in every industry. From planning to development to management and security, CA is working with companies worldwide to change the way we live, transact and communicate—across mobile, private and public cloud, distributed and mainframe environments. Learn more at ca.com.

Copyright © 2018 CA. All rights reserved. IBM, z/OS, CICS, MQSeries, Db2 and IMS are trademarks of International Business Machines Corporation in the United States, other countries, or both. All other trademarks, trade names, service marks and logos referenced herein belong to their respective companies. This document is for your informational purposes only. CA assumes no responsibility for the accuracy or completeness of the information. To the extent permitted by applicable law, CA provides this document "as is" without warranty of any kind, including, without limitation, any implied warranties of merchantability, fitness for a particular purpose, or noninfringement. In no event will CA be liable for any loss or damage, direct or indirect, from the use of this document, including, without limitation, lost profits, business interruption, goodwill, or lost data, even if CA is expressly advised in advance of the possibility of such damages.