

CA API Performance Monitoring

At a Glance

With today's organizations engaging customers and conducting transactions across digital channels, improvement of applications performance has never been more critical—especially as that performance depends on a complex framework of APIs and microservices. As a result, enterprises require insight into all API-level interactions to advance backend integration, mobile optimization and cloud orchestration.

CA API Performance Monitoring extends the functionality of the CA API Management and CA Application Performance Management (CA APM) solutions from CA Technologies, providing the real-time, in-depth and customizable visibility into API performance necessary to address this growing challenge.

Key Benefits/Results

- Improve operational efficiency via informed API development, testing and management.
- Speed-up root cause analysis and triage of API-related applications performance issues.
- Optimize and monitor API gateway traffic health via advanced analytics and instrumentation.
- Empower DevOps process and collaboration to enable continuous API improvement.

Key Features

- Out-of-the-box overview dashboards surface all API-related latencies, policy violations, routing failures and success counts.
- Customized user interface for API Gateway services, allowing centralized monitoring and management of all service related metrics.
- Detailed visualization, automated detection and alerting of API service latency degradation, leveraging CA APM Differential Analysis.
- Customizable dashboards and services type view analysis built via the easy-to-use CA APM drag-and-drop user interface.
- Automatic storage of all historic performance data for easy retrieval, comparative analysis, long-term monitoring and detailed reporting.

Business Challenges

As API management gateways are increasingly leveraged to provide standardized and secure access to the building blocks of today's sophisticated applications, enterprises must contend with a wide range of related latency, routing and policy monitoring implications. Centralized visibility into the detailed performance of those APIs that comprise their critical business applications enables organizations to advance key management requirements, including:

- Rapid identification, contextualization and triage of all application performance issues with API-oriented root causes, reducing overall Mean Time to Repair (MTTR)
- Detailed monitoring of data traversing the API gateway to highlight and address traffic health issues related to all managed APIs, applications and microservices
- Consistent, informed collaboration across development, engineering and integration teams to optimize API design, implementation and adaptation, along with necessary policy compliance

Solution Overview

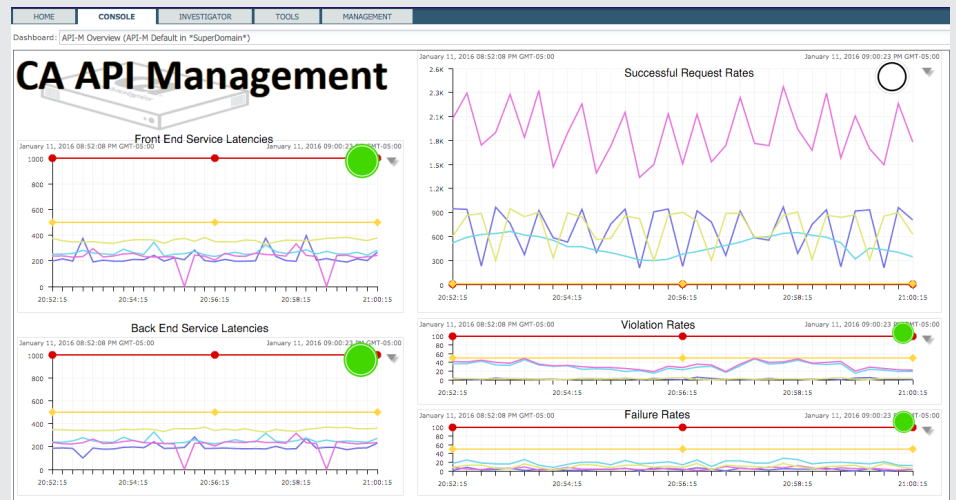
CA API Performance Monitoring serves as a dedicated integration point between the CA API Management and CA Application Performance Management solutions from CA Technologies, driving increased control over APIs and application microservices via:

- Inclusion of analytics gathered at the API layer into the application monitoring context for conclusive root cause analysis
- Predictive monitoring of service impacts through detailed and customizable visualization of API performance metrics
- Conclusive oversight into API-driven application microservices in direct relation to underlying application infrastructure
- Detailed representation of cross-layer API relationships and related management roles to better inform issue resolution
- Proactive management of API layer performance and scalability metrics that impact application infrastructure and SLAs

Critical Differentiators

- CA API Performance Monitoring further extends the capabilities of CA API Management, whose customers reduce [API policy maintenance and support times](#) by over 50 percent on average.
- CA API Performance Monitoring delivers targeted root cause analysis of API-level issues via CA APM, whose customers typically [reduce average applications MTR](#) by 50 percent or more.
- CA API Performance Monitoring deepens the intelligence of CA API Management, whose customers [reduce API policy creation times](#) from eight hours to 20 minutes (96 percent) on average.
- CA API Performance Monitoring builds on the results of CA API Management, whose customers reduce apps deployment time from 90 days to three days (97 percent) on average.
- CA API Performance Monitoring adds detailed API-level visibility to CA APM, whose customers prevent 50 percent or more of all [discovered applications issues](#).
- CA API Performance Monitoring provides API-level context to the advanced analysis of CA APM, whose customers typically [improve end user experience](#) by 50 percent or more.

API Performance Monitoring combines the detailed analysis and dashboard visibility of CA APM with the API-related intelligence of CA API Management.



Related Products/Solutions

CA APM provides a 360-degree view of the end-user experience by linking transactions to the underlying infrastructure across complex physical, virtual, mobile, cloud and mainframe environments.

CA API Management empowers enterprises to compose, secure and manage the performance and lifecycle of APIs. **CA API Gateways** can be used to secure and govern integrations that span on-premises systems and cloud apps.

Supported Environments

CA API Performance Monitoring integrates with every application infrastructure supported by the enterprise-ready CA APM and API Management solutions from CA Technologies.

For more information, please visit ca.com/api and ca.com/apm

CA Technologies (NASDAQ: CA) creates software that fuels transformation for companies and enables them to seize the opportunities of the application economy. Software is at the heart of every business, in every industry. From planning to development to management and security, CA is working with companies worldwide to change the way we live, transact and communicate – across mobile, private and public cloud, distributed and mainframe environments. Learn more at ca.com.