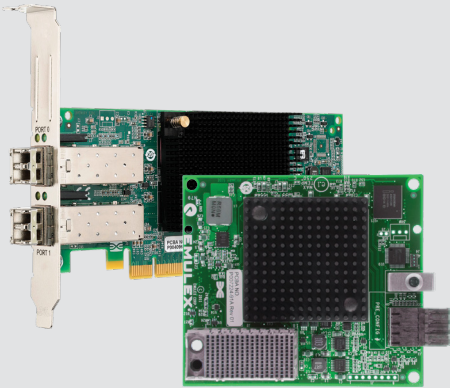


Product Brief



Key Features

- Reduce total cost of ownership (TCO) by enhancing network availability and reducing management costs
- Streamline adapter administration through centralized cross platform management capability
- Centralize virtual server management with plug-in module support for the VMware vSphere Web Client
- Enhance overall performance and speed troubleshooting with robust diagnostic capabilities
- Implement Storage Area Network (SAN) best practices in virtual server environments
- Improve reallocation of assets within virtualized server environments
- Increase management efficiency through scripting and batch mode capabilities

Emulex HBA Manager

Centralized Management of Emulex® Fibre Channel HBAs

The Emulex HBA Manager application, formerly known as OneCommand Manager, provides comprehensive control of Emulex Fibre Channel Host Bus Adapters (HBAs) by Broadcom within a centralized, cross-platform framework. Broad operating system support ensures seamless integration and operation for enterprise network environments, while the graphical user interface (GUI) and command line interface (CLI) options enable automation and integration. Emulex HBA Manager features a powerful suite of diagnostics tools and customizable reporting capabilities to help data center administrators optimize network performance and availability.

Operating System Support

- Windows
- Linux
- Solaris

Hypervisor Support

- VMware vSphere
- Microsoft Hyper-V
- Xen
- KVM

Relevant Standards

- FC-GS-7
- FC-SP-2
- CIM/SMI-S

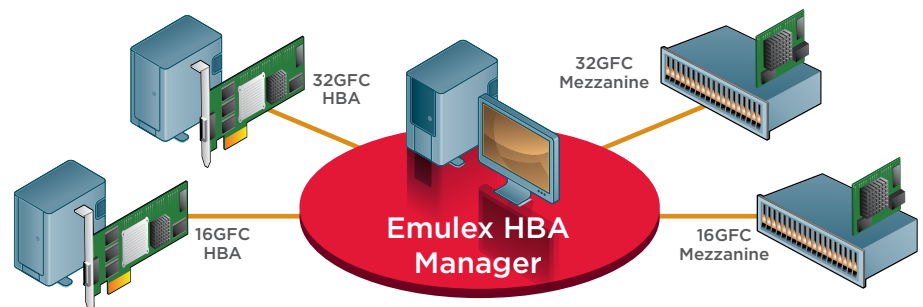
Improve Management Efficiency

Centralize Adapter Administration

Emulex HBA Manager provides comprehensive control of Fibre Channel HBAs within a centralized, cross-platform framework.

Leverage Management Automation

Emulex HBA Manager automates key management tasks for unparalleled efficiency in adapter configuration and management.



Key Features (cont.)

- Plug-in module integration with VMware vSphere Web Client provides integrated management with virtual server deployments
- Secure management with role-based administration integrated with Light Directory Access Protocol (LDAP) and Active Directory (AD) services
- Cross-platform solution with broad operating system and hypervisor support
- Extensive CLI with advanced scripting capabilities
- Online Boot-from-SAN (BFS) capability enables diskless server provisioning
- Automated, batch driver and firmware update
- Extensive diagnostic and troubleshooting capabilities

Driver profiles and firmware updates can be replicated and easily propagated using batch mode. The Emulex HBA Manager CLI provides powerful scripting capabilities to automate or customize administration tasks

Role-based Management

Emulex HBA Manager supports role-based management to facilitate administration of Emulex HBAs throughout the data center without compromising security. Management privileges can be assigned based on LDAP and AD group memberships.

Fast Access To Hardware Configuration Information

The Fabric Device Management Interface (FDMI) provides information such as WW Node-name, manufacturer, serial number, model/model description, hardware revision, firmware, driver, OS and version, boot bios state and version (for boot-from-

SAN configurations). FDMI also enables you to see any errors that have occurred from the switch-port towards the HBA for rapid troubleshooting and performance tuning.

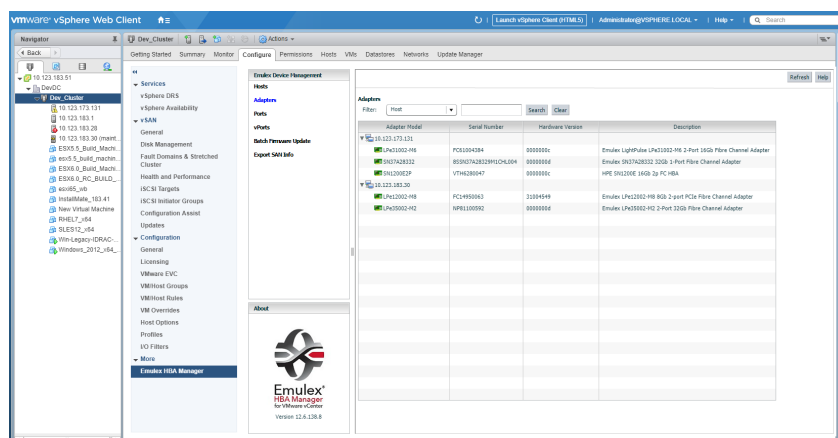
Enhance Ease-of-use

Emulex HBA Manager ease-of-use features like aliasing and view settings enable easier identification and management of adapters.

Increase Data Center Consolidation

Virtual Server Deployments

Virtual Fibre Channel adapter ports enable application of SAN best practices, such as logic unit number (LUN) masking and zoning. The Vport mapping function displays virtual adapter port to virtual machine (VM) associations—eliminating the need to use multiple management tools, improving management efficiency and increasing resource flexibility.



Emulex HBA Manager has been tested for interoperability and seamless integration with the leading server virtualization solutions, such as VMware vSphere, Microsoft Hyper-V, KVM and Xen source.

Emulex HBA Manager capabilities are also available in the Emulex plug-in module for the VMware vSphere Web Client.

Increase Availability

Emulex HBA Manager is designed to maximize enterprise availability. Should a server go off-line, Emulex HBA Manager can be used to transfer the affected HBA's WWPN to a replacement. This ensures maximum network availability in clustered and non-clustered environments.

Powerful diagnostic features capture key adapter information, helping to expedite root cause analysis and reduce time to resolution. Flexible reporting tools provide customized views of the network. The beaconing function can be used to quickly identify an adapter within a server by distinctive flashing of the adapter's LEDs.

Online Boot-from-SAN (BFS) management improves server provisioning by enabling pre-staging of BFS settings while the server is running. This provides greater speed and flexibility to reduce deployment costs and improve SAN availability.

A Versatile Foundation for Storage Management

Emulex HBA Manager can be integrated into storage and server management solutions using industry-standard management instrumentation or application-level integration facilities. It is designed to operate as a seamless extension to third-party management solutions, providing active management of Broadcom adapters within these environments.