

ACNT-H313

2.5A Output Current IGBT Gate Drive Optocoupler in a 15-mm Stretched SO-8 Package

Description

The Broadcom® ACNT-H313 contains an LED that is optically coupled to an integrated circuit with a power output stage. This optocoupler is ideally suited for driving power IGBTs and MOSFETs used in motor control inverter applications. The high operating voltage range of the output stage provides the drive voltages required by gate-controlled devices. The voltage and high peak output current supplied by this optocoupler can be used to drive IGBT directly. For IGBTs with higher ratings, this optocoupler can be used to drive a discrete power stage, which drives the IGBT gate. The ACNT-H313 has the highest insulation voltage of $V_{IORM} = 2262 V_{PEAK}$ in the IEC/EN/DIN EN 60747-5-5.

Features

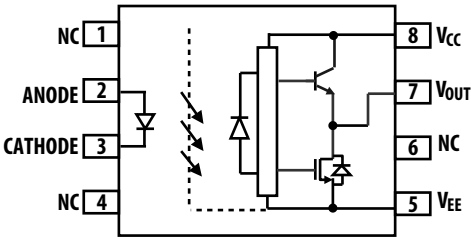
- 2.5A maximum peak output current
- 2.0A minimum peak output current
- 500-ns maximum propagation delay
- 350-ns maximum propagation delay difference
- 40-kV/ μ s minimum common mode rejection (CMR) at $V_{CM} = 2000V$
- $I_{CC} = 5.0$ -mA maximum supply current
- Under-voltage lockout protection (UVLO) with hysteresis
- Wide operating V_{CC} range: 15V to 30V
- Industrial temperature range: $-40^{\circ}C$ to $105^{\circ}C$
- Safety approvals
 - UL recognized 7500 V_{RMS} for 1 minute
 - CSA
 - IEC/EN/DIN EN 60747-5-5 $V_{IORM} = 2262 V_{PEAK}$

Applications

- High-power system: 690- V_{AC} drives
- IGBT/MOSFET gate drives
- AC and brushless DC motor drives
- Renewable energy inverters
- Industrial inverters
- Switching power supplies

CAUTION! Take normal static precautions in the handling and assembly of this component to prevent damage and degradation that might be induced by ESD. The component featured in this data sheet is not recommended to be used in military or aerospace applications or environments. The component is not AEC-Q100 qualified and not recommended for automotive applications.

Functional Diagram



NOTE: NC denotes Not Connected, and a 0.1-μF bypass capacity must be connected between pins V_{CC} and V_{EE}.

Truth Table

LED	V _{CC} – V _{EE} “POSITIVE GOING” (i.e., TURN-ON)	V _{CC} – V _{EE} “NEGATIVE GOING” (i.e., TURN-OFF)	V _O
OFF	0V to 30V	0V to 30V	LOW
ON	0V to 11V	0V to 9.5V	LOW
ON	11V to 13.5V	9.5V to 12V	TRANSITION
ON	13.5V to 30V	12V to 30V	HIGH

Ordering Information

The ACNT-H313 is UL recognized with 7500 V_{RMS} for 1 minute per UL1577.

Part Number	Option	Package	Surface Mount	Tape and Reel	IEC/EN/DIN EN 60747-5-5 V _{IORM} = 2262 V _{PEAK}	Quantity
	RoHS Compliant					
ACNT-H313	-000E	15-mm Stretched SO-8	X		X	80 per tube
	-500E		X	X	X	1000 per reel

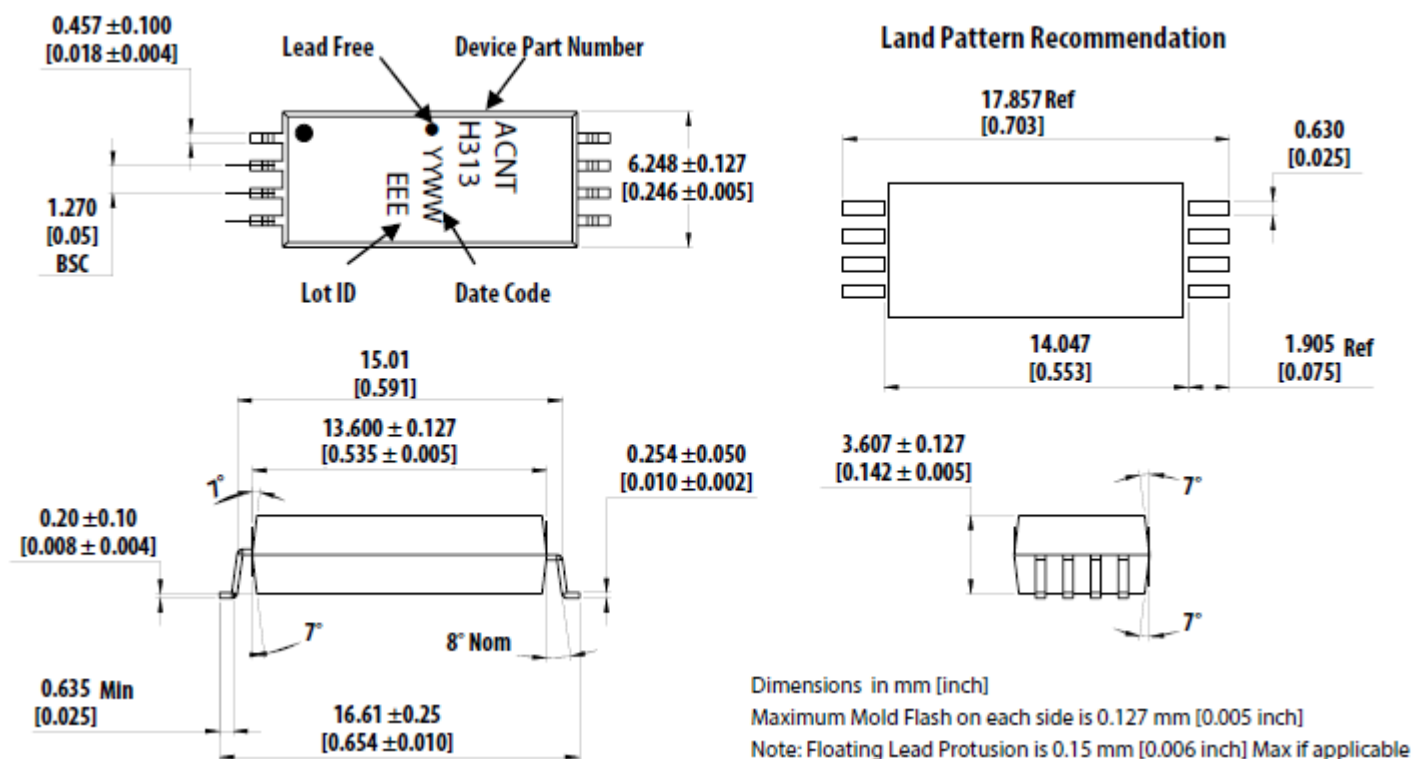
To form an order entry, choose a part number from the Part Number column and combine it with the desired option from the Option column.

Example 1:

Use ACNT-H313-500E to order the product in a surface-mount package in tape and reel packaging with IEC/EN/DIN EN 60747-5-5 safety approval and RoHS compliance.

Option data sheets are available. Contact your Broadcom sales representative or authorized distributor for information.

Package Outline Drawing



Recommended Pb-Free IR Profile

The recommended reflow condition is as per JEDEC standard J-STD-020 (latest revision). Non-halide flux should be used.

Regulatory Information

The ACNT-H313 is approved by the following organizations.

UL	Recognized under UL 1577, component recognition program up to $V_{ISO} = 7500 V_{RMS}$, File E55361.
CSA	CSA Component Acceptance Notice #5, File CA 88324.
IEC/EN/DIN EN 60747-5-5	Maximum repetitive peak isolation voltage $V_{IORM} = 2262 V_{PEAK}$.

IEC/EN/DIN EN 60747-5-5 Insulation Characteristics (See Note)

Description	Symbol	Characteristic	Units
Installation Classification per DIN VDE 0110/39, Table 1 For rated mains voltage $\leq 600 V_{RMS}$ For rated mains voltage $\leq 1000 V_{RMS}$	—	I-IV I-IV	—
Climatic Classification	—	40/105/21	—
Pollution Degree (DIN VDE 0110/39)	—	2	—
Maximum Repetitive Peak Isolation Voltage	V_{IORM}	2262	V_{PEAK}
Input to Output Test Voltage, Method b ^a $V_{IORM} \times 1.875 = V_{PR}$, 100% Production Test with $t_m = 1$ second, Partial discharge < 5 pC	V_{PR}	4242	V_{PEAK}
Input to Output Test Voltage, Method a ^a $V_{IORM} \times 1.6 = V_{PR}$, Type and Sample Test, $t_m = 10$ seconds, Partial discharge < 5 pC	V_{PR}	3619	V_{PEAK}
Maximum Working Isolation Voltage ^a	V_{IOWM}	2262 (Reinforced)	V_{DC}
		2827 (Basic)	V_{DC}
		1600 (Reinforced)	V_{RMS}
Highest Allowable Overvoltage ^a Transient Overvoltage $t_{ini} = 60$ seconds)	V_{IOTM}	12000	V_{PEAK}
Safety-Limiting Values – Maximum Values Allowed in the Event of a Failure Case Temperature Input Current Output Power	T_S $I_{S, INPUT}$ $P_{S, OUTPUT}$	175 230 1000	$^{\circ}C$ mA mW
Insulation Resistance at T_S , $V_{IO} = 500V$	R_S	$>10^9$	Ω

a. Refer to the IEC/EN/DIN EN 60747-5-5 Optoisolator Safety Standard section of the *Broadcom Regulatory Guide to Isolation Circuits*, AV02-2041EN, for a detailed description of the Method a and Method b partial discharge test profiles.

NOTE: These optocouplers are suitable for “safe electrical isolation” only within the safety limit data. Maintenance of the safety data shall be ensured by means of protective circuits. The surface-mount classification is Class A in accordance with CECC 00802.

Insulation and Safety Related Specifications

Parameter	Symbol	ACNT-H313	Units	Conditions
Minimum External Air Gap (Clearance)	L(101)	14.2	mm	Measured from input terminals to output terminals, shortest distance through the air.
Minimum External Tracking (Creepage)	L(102)	15	mm	Measured from input terminals to output terminals, shortest distance path along the body.
Minimum Internal Plastic Gap (Internal Clearance)		0.5	mm	Through insulation distance conductor to conductor, usually the straight-line distance thickness between the emitter and the detector.
Tracking Resistance (Comparative Tracking Index)	CTI	> 300	V	DIN IEC 112/VDE 0303 Part 1.
Isolation Group	—	IIIa	—	Material Group (DIN VDE 0110, 1/89, Table 1).

All Broadcom data sheets report the creepage and clearance inherent to the optocoupler component itself. These dimensions are needed as a starting point for the equipment designer when determining the circuit insulation requirements. However, once mounted on a printed circuit board, minimum creepage and clearance requirements must be met as specified for individual equipment standards. For creepage, the shortest distance path along the surface of a printed circuit board between the solder fillets of the input and output leads must be considered (the recommended land pattern does not necessarily meet the minimum creepage of the device). There are recommended techniques such as grooves and ribs that may be used on a printed circuit board to achieve desired creepage and clearances. Creepage and clearance distances will also change depending on factors, such as pollution degree and insulation level.

Absolute Maximum Ratings

Parameter	Symbol	Min.	Max.	Units	Note
Storage Temperature	T_S	-55	125	°C	
Operating Temperature	T_A	-40	105	°C	
Average Input Current	$I_{F(AVG)}$	—	25	mA	a
Reverse Input Voltage	V_R	—	5	V	
“High” Peak Output Current	$I_{OH(PEAK)}$	—	2.5	A	b
“Low” Peak Output Current	$I_{OL(PEAK)}$	—	2.5	A	b
Total Output Supply Voltage	$(V_{CC} - V_{EE})$	0	35	V	
Input Current (Rise/Fall Time)	$t_{r(IN)} / t_{f(IN)}$	—	500	ns	
Output Voltage	$V_{O(PEAK)}$	-0.5	V_{CC}	V	
Output IC Power Dissipation	P_O	—	800	mW	c
Total Power Dissipation	P_T	—	850	mW	d

- Derate linearly above 70°C free-air temperature at a rate of 0.3 mA/°C.
- Maximum pulse width = 10 ms. This value is intended to allow for component tolerances for designs with I_O peak minimum = 2.0A. See [Applications Information](#) for additional details on limiting I_{OH} peak.
- Derate linearly above 85°C free-air temperature at a rate of -20 mW/°C.
- Derate linearly above 85°C free-air temperature at a rate of -21.25 mW/°C. The maximum LED junction temperature should not exceed 125°C.

Recommended Operating Conditions

Parameter	Symbol	Min.	Max.	Units
Operating Temperature	T_A	-40	105	°C
Output Supply Voltage	$(V_{CC} - V_{EE})$	15	30	V
Input Current (ON)	$I_{F(ON)}$	7	12	mA
Input Voltage (OFF)	$V_{F(OFF)}$	-3.6	0.5	V

Electrical Specifications (DC)

All typical values are at $T_A = 25^\circ\text{C}$, $V_{CC} - V_{EE} = 30\text{V}$, $V_{EE} = \text{Ground}$. All minimum and maximum specifications are at recommended operating conditions ($T_A = -40^\circ\text{C}$ to 105°C , $I_{F(ON)} = 7\text{ mA}$ to 12 mA , $V_{F(OFF)} = -3.6\text{V}$ to 0.8V , $V_{EE} = \text{Ground}$, $V_{CC} = 15\text{V}$ to 30V), unless otherwise noted.

Parameter	Symbol	Min.	Typ.	Max.	Units	Test Conditions	Figure	Note
High Level Peak Output Current	I_{OH}	0.5	1.5	—	A	$V_O = V_{CC} - 4\text{V}$	2, 3, 16	a
		2.0	—	—	A	$V_O = V_{CC} - 15\text{V}$		b
Low Level Peak Output Current	I_{OL}	0.5	2.0	—	A	$V_O = V_{EE} + 2.5\text{V}$	5, 6, 17	a
		2.0	—	—	A	$V_O = V_{EE} + 15\text{V}$		b
High Level Output Voltage	V_{OH}	$V_{CC} - 4$	$V_{CC} - 3$	—	V	$I_O = -100\text{ mA}$	1, 3, 18	c, d
Low Level Output Voltage	V_{OL}	—	0.1	0.5	V	$I_O = 100\text{ mA}$	4, 6, 19	
High Level Supply Current	I_{CCH}	—	2.5	5.0	mA	Output Open, $I_F = 10\text{ mA}$	7, 8	
Low Level Supply Current	I_{CCL}	—	2.5	5.0	mA	Output Open, $V_F = -3.6\text{V}$ to 0.8V		
Threshold Input Current Low to High	I_{FLH}	—	1.0	5.0	mA	$I_O = 0\text{ mA}$, $V_O > 5\text{V}$	9, 15, 20	
Threshold Input Voltage High to Low	V_{FHL}	0.5	—	—	V			
Input Forward Voltage	V_F	1.2	1.45	1.8	V	$I_F = 10\text{ mA}$		
Temperature Coefficient of Input Forward Voltage	$\Delta V_F / \Delta T_A$	—	-1.5	—	mV/°C	$I_F = 10\text{ mA}$		
Input Reverse Breakdown Voltage	BV_R	3	—	—	V	$I_R = 100\text{ }\mu\text{A}$		
Input Capacitance	C_{IN}		23	—	pF	$f = 1\text{ MHz}$, $V_F = 0\text{V}$		
UVLO Threshold	V_{UVLO+}	11.0	12.3	13.5	V	$V_O > 5\text{V}$, $I_F = 10\text{ mA}$	21	
	V_{UVLO-}	9.5	10.7	12.0				
UVLO Hysteresis	$UVLO_{HYS}$	—	1.6	—				

- Maximum pulse width = 50 ms.
- Maximum pulse width = 10 ms. This value is intended to allow for component tolerances for designs with I_O peak minimum = 2.0A. See [Applications Information](#) for additional details on limiting I_{OH} peak.
- In this test, V_{OH} is measured with a DC load current. When driving capacitive loads, V_{OH} will approach V_{CC} as I_{OH} approaches 0A.
- Maximum pulse width = 1 ms.

Switching Specifications (AC)

All typical values are at $T_A = 25^\circ\text{C}$, $V_{CC} - V_{EE} = 30\text{V}$, $V_{EE} = \text{Ground}$. All minimum and maximum specifications are at recommended operating conditions ($T_A = -40^\circ\text{C}$ to 105°C , $I_{F(\text{ON})} = 7\text{ mA}$ to 12 mA , $V_{F(\text{OFF})} = -3.6\text{V}$ to 0.8V , $V_{EE} = \text{Ground}$, $V_{CC} = 15\text{V}$ to 30V), unless otherwise noted.

Parameter	Symbol	Min.	Typ.	Max.	Units	Test Conditions	Figure	Note
Propagation Delay Time to High Output Level	t_{PLH}	0.10	0.28	0.50	μs	$R_g = 10\Omega$, $C_g = 10\text{ nF}$, $f = 10\text{ kHz}$, Duty Cycle = 50%, $I_F = 7\text{ mA}$ to 12 mA , $V_{CC} = 15\text{V}$ to 30V	10, 11, 12, 13, 14, 22	
Propagation Delay Time to Low Output Level	t_{PHL}	0.10	0.30	0.50	μs			
Pulse Width Distortion	PWD	—	—	0.30	μs			a
Propagation Delay Difference Between Any Two Parts	PDD ($t_{PHL} - t_{PLH}$)	-0.35	—	0.35	μs			b
Propagation Delay Skew	t_{PSK}	—	—	0.20	μs			c
Rise Time	t_r	—	0.10	—	μs		22	
Fall Time	t_f	—	0.10	—	μs			
UVLO Turn On Delay	$t_{UVLO\text{ ON}}$	—	0.80	—	μs	$V_O > 5\text{V}$, $I_F = 10\text{ mA}$	21	
UVLO Turn Off Delay	$t_{UVLO\text{ OFF}}$	—	0.60	—	μs	$V_O < 5\text{V}$, $I_F = 10\text{ mA}$		
Output High Level Common Mode Transient Immunity	$ CM_H $	40	50	—	$\text{kV}/\mu\text{s}$	$T_A = 25^\circ\text{C}$, $I_F = 10\text{ mA}$, $V_{CM} = 2000\text{V}$, $V_{CC} = 30\text{V}$	23	d, e
Output Low Level Common Mode Transient Immunity	$ CM_L $	40	50	—	$\text{kV}/\mu\text{s}$	$T_A = 25^\circ\text{C}$, $V_F = 0\text{V}$, $V_{CM} = 2000\text{V}$, $V_{CC} = 30\text{V}$		d, f

- Pulse width distortion (PWD) is defined as $|t_{PHL} - t_{PLH}|$ for any given device.
- The difference between t_{PHL} and t_{PLH} between any two ACNT-H313 parts under the same test condition.
- t_{PSK} is equal to the worst-case difference in t_{PHL} or t_{PLH} that will be seen between units at any given temperature and specified test conditions.
- Pins 1 and 4 must be connected to LED common. Split resistor network in the ratio 1.5:1 with 215W at the anode and 140W at the cathode.
- Common mode transient immunity in the high state is the maximum tolerable dV_{CM}/dt of the common mode pulse, V_{CM} , to ensure that the output will remain in the high state (that is, $V_O > 15.0\text{V}$).
- Common mode transient immunity in a low state is the maximum tolerable dV_{CM}/dt of the common mode pulse, V_{CM} , to ensure that the output will remain in a low state (that is, $V_O < 1.0\text{V}$).

Package Characteristics

All typical values are at $T_A = 25^\circ\text{C}$. All minimum/maximum specifications are at recommended operating conditions, unless otherwise noted.

Parameter	Symbol	Min.	Typ.	Max.	Units	Test Conditions	Note
Input-Output Momentary Withstand Voltage ^a	V_{ISO}	7500	—	—	V_{RMS}	RH < 50%, $t = 1 \text{ min.}$, $T_A = 25^\circ\text{C}$	b, c
Input-Output Resistance	$R_{\text{I-O}}$	—	10^{12}	—	Ω	$V_{\text{I-O}} = 500 V_{\text{DC}}$	c
Input-Output Capacitance	$C_{\text{I-O}}$	—	0.5	—	pF	$f = 1 \text{ MHz}$	
LED-to-Ambient Thermal Resistance	R_{11}	—	87	—	$^\circ\text{C/W}$	See Thermal Model	d
LED-to-Detector Thermal Resistance	R_{12}	—	23	—			
Detector-to-LED Thermal Resistance	R_{21}	—	30	—			
Detector-to-Ambient Thermal Resistance	R_{22}	—	47	—			

- The input-output momentary withstand voltage is a dielectric voltage rating that should not be interpreted as an input-output continuous voltage rating. For the continuous voltage rating, refer to your equipment level safety specification or Broadcom Application Note 1074, *Optocoupler Input-Output Endurance Voltage*.
- In accordance with UL1577, each optocoupler is proof-tested by applying an insulation test voltage $\geq 9000 V_{\text{RMS}}$ for 1 second (leakage detection current limit, $I_{\text{I-O}} \leq 5 \mu\text{A}$).
- The device is considered to be a two-terminal device: pins 1, 2, 3, and 4 shorted together, and pins 5, 6, 7, and 8 shorted together.
- The device was mounted on a high-conductivity test board as per JEDEC 51-7.

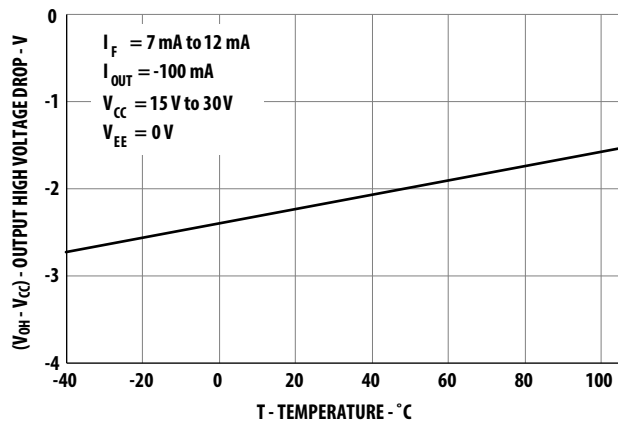
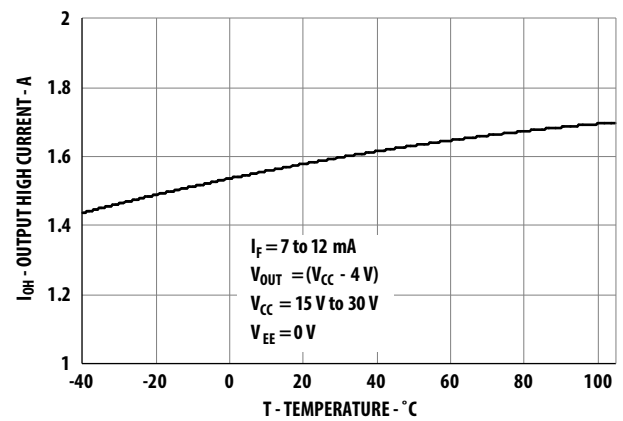
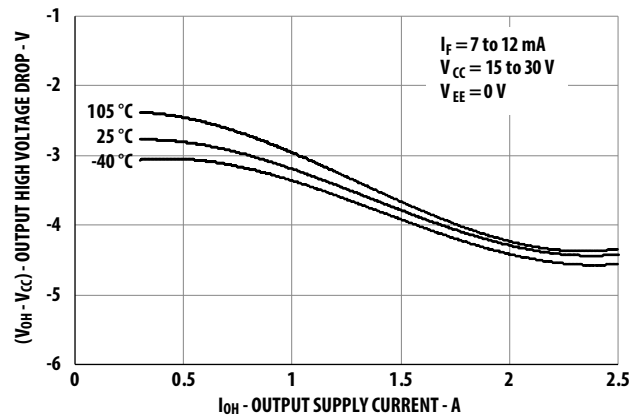
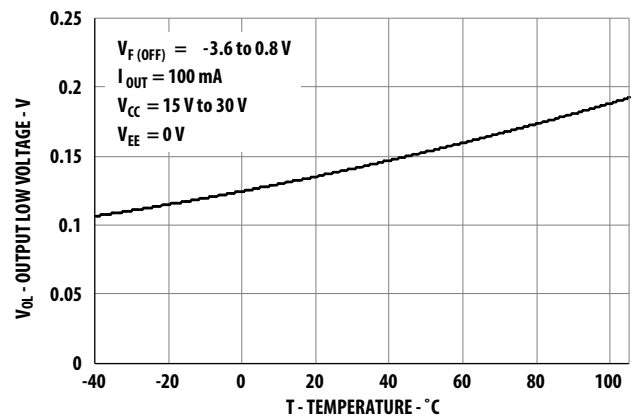
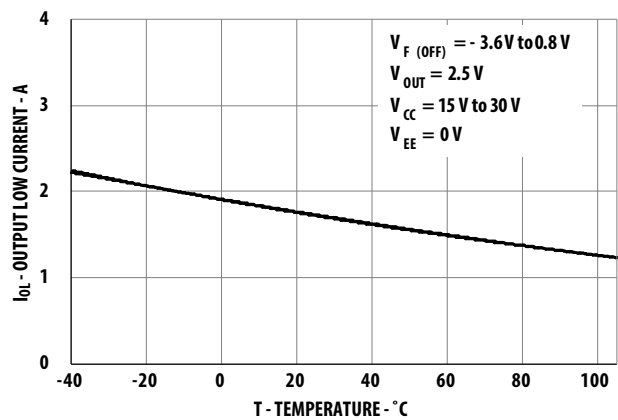
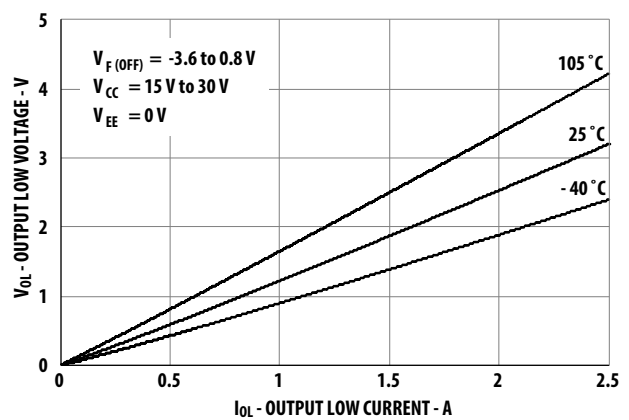
Figure 1: V_{OH} vs. TemperatureFigure 2: I_{OH} vs. TemperatureFigure 3: I_{OH} vs. V_{OH} Figure 4: V_{OL} vs. TemperatureFigure 5: I_{OL} vs. TemperatureFigure 6: V_{OL} vs. I_{OL} 

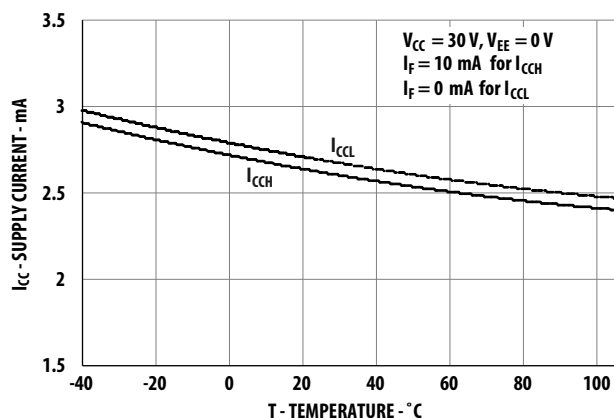
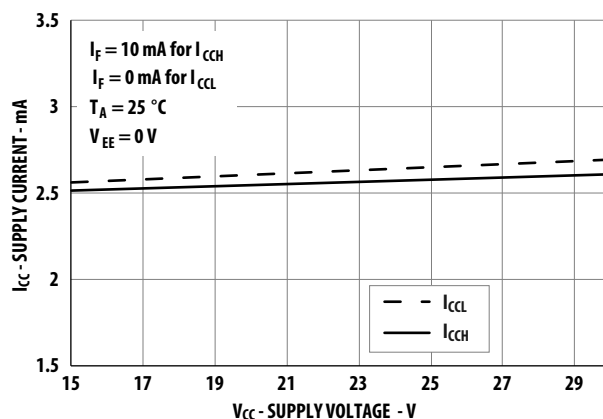
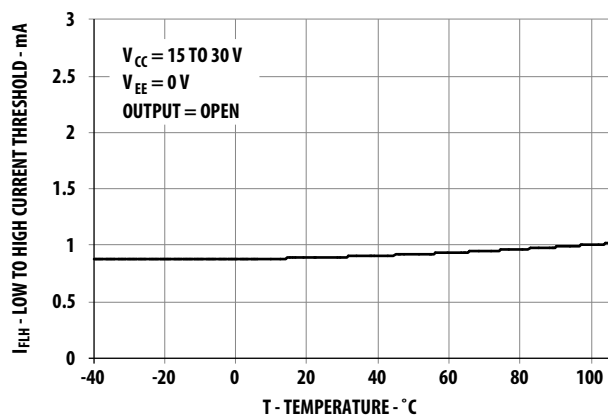
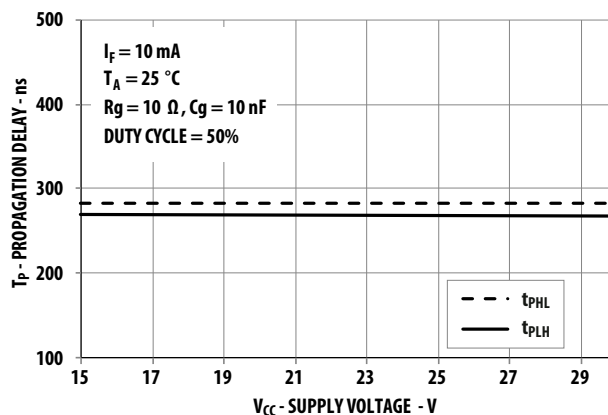
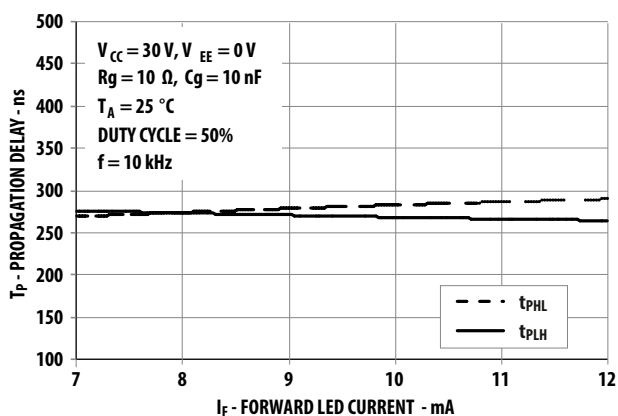
Figure 7: I_{CC} vs. TemperatureFigure 8: I_{CC} vs. V_{CC} Figure 9: I_{FLH} vs. TemperatureFigure 10: Propagation Delay s. V_{CC} Figure 11: Propagation Delay vs. I_F 

Figure 12: Propagation Delay vs. Temperature

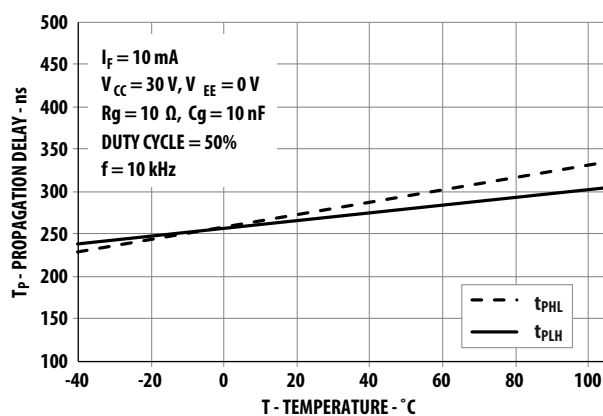


Figure 13: Propagation Delay vs. Rg

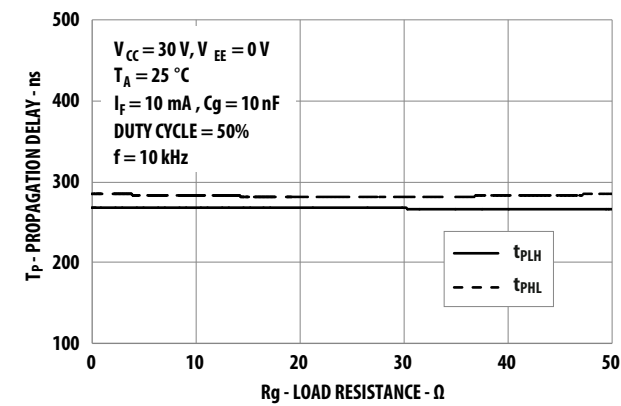


Figure 14: Propagation Delay vs. Cg

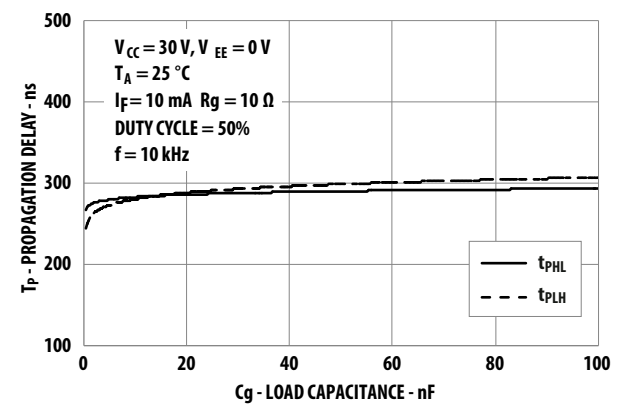


Figure 15: Transfer Characteristics

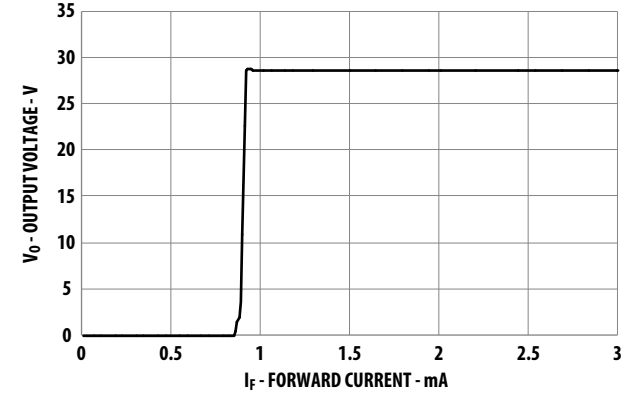


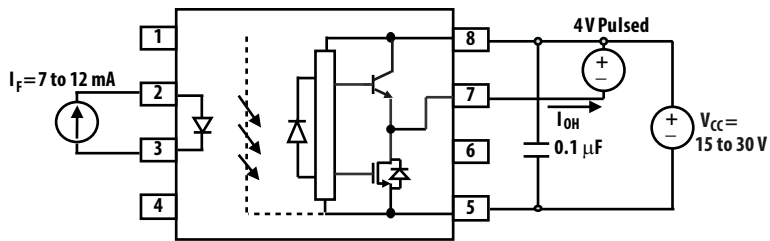
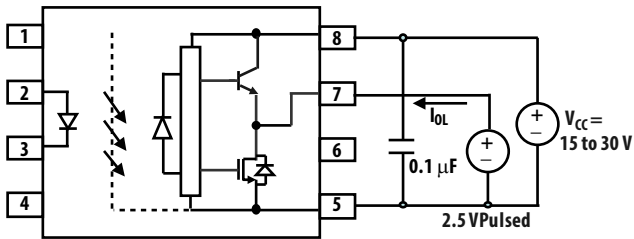
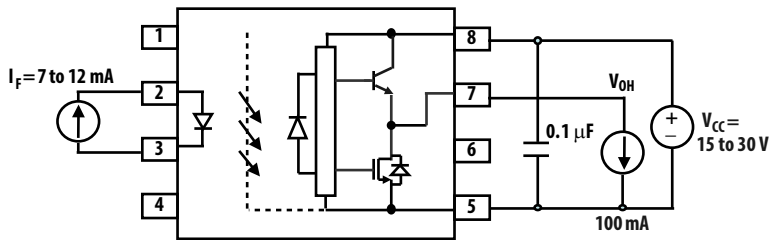
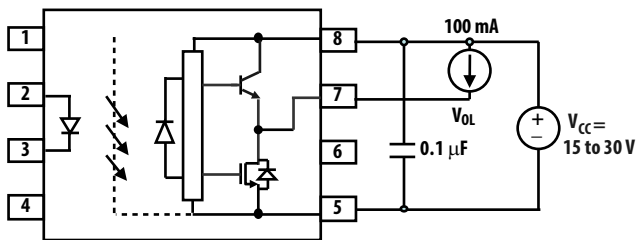
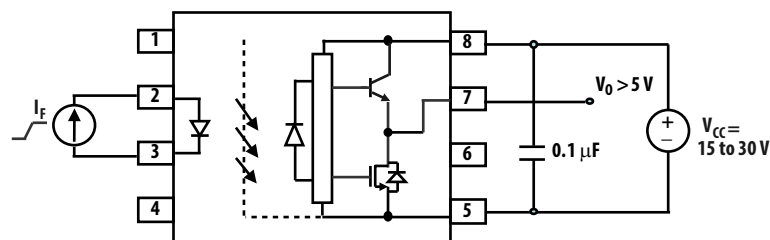
Figure 16: I_{OL} Test CircuitFigure 17: I_{OH} Test CircuitFigure 18: V_{OH} Test CircuitFigure 19: V_{OL} Test CircuitFigure 20: I_{FLH} Test Circuit

Figure 21: ULVO Test Circuit

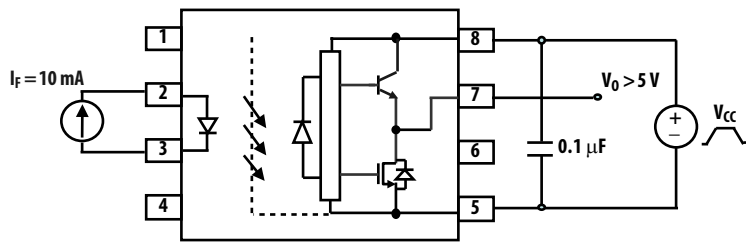
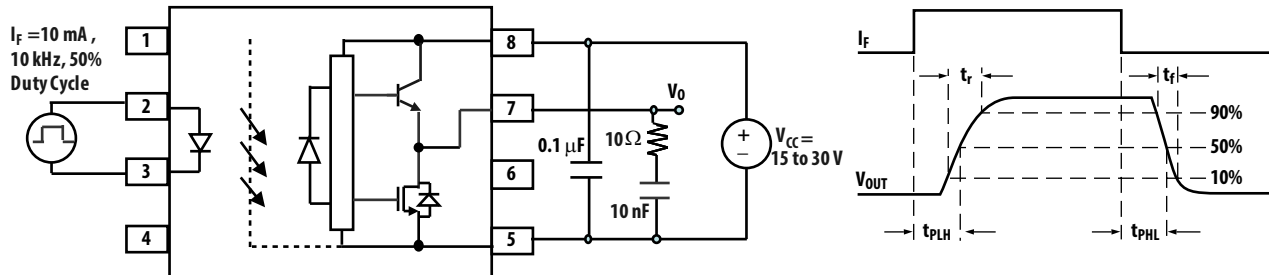
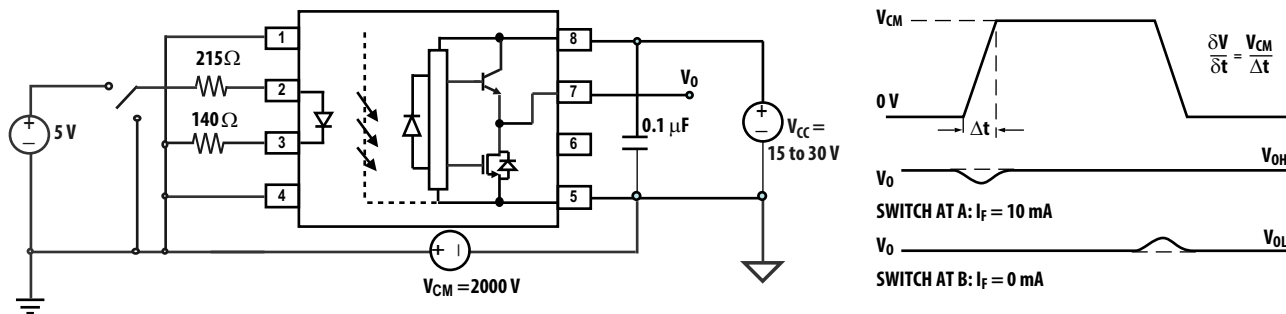
Figure 22: t_{PLH} , t_{PHL} , t_r , and t_f Test Circuit and Waveforms

Figure 23: CMR Test Circuit and Waveforms



Applications Information

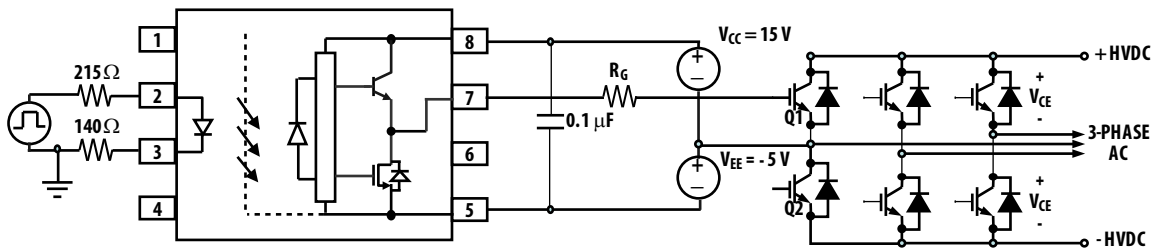
Selecting the Gate Resistor (R_g) to Minimize IGBT Switching Losses

Step 1: Calculate R_g minimum from the IOL peak specification. The IGBT and R_g in [Figure 24](#) can be analyzed as a simple RC circuit with a voltage supplied by the ACNT-H313.

$$\begin{aligned}
 R_g &\geq \frac{V_{CC} - V_{EE} - V_{OL}}{I_{OLPEAK}} \\
 &= \frac{15 + 5 - 2}{2.5} \\
 &= 7.2\Omega \cong 8\Omega
 \end{aligned}$$

The V_{OL} value of 2V in the previous equation is a conservative value of V_{OL} at the peak current of 2.5A (see [Figure 6](#)). At lower R_g values, the voltage supplied by the ACNT-H313 is not an ideal voltage step. This results in lower peak currents (more margin) than predicted by this analysis. When negative gate drive is not used V_{EE} in the previous equation is equal to 0V.

Figure 24: ACNT-H313 Typical Application Circuit



Step 2: Check the ACNT-H313 power dissipation and increase R_g if necessary. The ACNT-H313 total power dissipation (P_T) is equal to the sum of the emitter power (P_E) and the output power (P_O).

$$P_T = P_E + P_O$$

$$P_E = I_F \cdot V_F \cdot \text{DutyCycle}$$

$$P_O = P_{O(BIAS)} + P_{O(SWITCHING)} = I_{CC} \cdot V_{CC} + E_{SW}(R_g, Q_g) \cdot f$$

P_E Parameter	Description
I_F	LED current
V_F	LED-on voltage
Duty Cycle	Maximum LED duty cycle

P_O Parameter	Description
I_{CC}	Supply current
V_{CC}	Positive supply voltage
V_{EE}	Negative supply voltage
$E_{SW}(R_g, Q_g)$	Energy dissipated in the ACNT-H313 for each IGBT switching cycle (see Figure 25)
f	Switching frequency

For the circuit in Figure 24 with I_F (worst case) = 12 mA, $R_g = 8\Omega$, maximum duty cycle = 80%, $Q_g = 500$ nC, $f = 20$ kHz, and T_A maximum = 85°C.

$$P_E = 12 \text{ mA} \cdot 1.8 \text{ V} \cdot 0.8 = 17.3 \text{ mW}$$

$$P_O = 4.25 \text{ mA} \cdot 20 \text{ V} + 5.2 \mu\text{J} \cdot 20 \text{ kHz}$$

$$= 85 \text{ mW} + 104 \text{ mW}$$

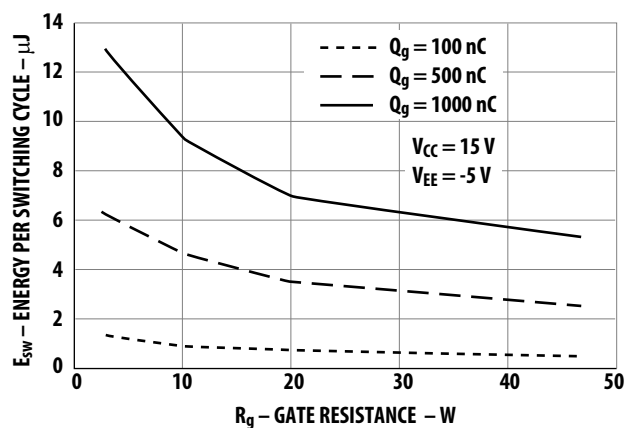
$$= 189 \text{ mW}$$

$$< 800 \text{ mW } (P_{O(\text{MAX})} @ 85^\circ\text{C})$$

The value of 4.25 mA for I_{CC} in the previous equation was obtained by derating the I_{CC} maximum of 5 mA (which occurs at -40°C) to the I_{CC} maximum at 85°C (see Figure 7).

Because P_O for this case is smaller than $P_{O(\text{MAX})}$, an R_g of 8Ω can be used.

Figure 25: Energy Dissipated in the ACNT-H313 for Each IGBT Switching Cycle



Thermal Model

Definitions

R_{11}	Junction-to-Ambient Thermal Resistance of LED due to heating of LED
R_{12}	Junction-to-Ambient Thermal Resistance of LED due to heating of Detector (Output IC)
R_{21}	Junction-to-Ambient Thermal Resistance of Detector (Output IC) due to heating of LED
R_{22}	Junction-to-Ambient Thermal Resistance of Detector (Output IC) due to heating of Detector (Output IC)
P_1	Power dissipation of LED (W)
P_2	Power dissipation of Detector/Output IC (W)
T_1	Junction temperature of LED (°C)
T_2	Junction temperature of Detector (°C)
T_A	Ambient temperature

Ambient Temperature: Junction-to-Ambient Thermal Resistances were measured approximately 1.25 cm above the optocoupler at ~23°C in still air.

Thermal Resistance	°C/W
R_{11}	87
R_{12}	23
R_{21}	30
R_{22}	47

This thermal model assumes that the device is soldered onto a high-conductivity board as per JEDEC 51-7. The temperature at the LED and Detector junctions of the optocoupler can be calculated using the following equations:

$$T_1 = (R_{11} \times P_1 + R_{12} \times P_2) + T_A \text{ -- (1)}$$

$$T_2 = (R_{21} \times P_1 + R_{22} \times P_2) + T_A \text{ -- (2)}$$

Using the given thermal resistances and thermal model formula in this data sheet, we can calculate the junction temperature for both LED and the output detector. Both junction temperatures should be within the absolute maximum rating of 125°C.

Related Documents

AV02-0421EN	Application Note 5336	<i>Gate Drive Optocoupler Basic Design for IGBT / MOSFET</i>
AV02-3698EN	Application Note 1043	<i>Common-Mode Noise: Sources and Solutions</i>
AV02-0310EN	Reliability Data	<i>Plastics Optocouplers Product ESD and Moisture Sensitivity</i>

Copyright © 2016–2025 Broadcom. All Rights Reserved. The term “Broadcom” refers to Broadcom Inc. and/or its subsidiaries. For more information, go to www.broadcom.com. All trademarks, trade names, service marks, and logos referenced herein belong to their respective companies.

Broadcom reserves the right to make changes without further notice to any products or data herein to improve reliability, function, or design. Information furnished by Broadcom is believed to be accurate and reliable. However, Broadcom does not assume any liability arising out of the application or use of this information, nor the application or use of any product or circuit described herein, neither does it convey any license under its patent rights nor the rights of others

