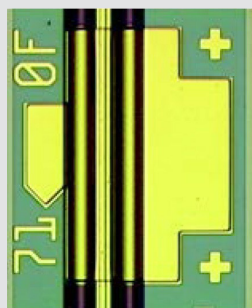


Product Brief



Key Features

- Very high reliability
- High output power
- Wide operating temperature

247x/293L1xx/293B20/295P20

Edge-Emitting Continuous-Wave (CW) DFB Lasers for External Modulators

Overview

Broadcom offers a range of single-mode, edge-emitting distributed feedback (DFB) laser diode chips with O-band (1.3 μm), 1.49 μm , and C-band (1.5 μm) wavelengths for use in continuous-wave (CW) operation in applications using external modulation, including silicon photonics.

Using extensive knowledge in CMBH-grown, multi-quantum well active layer designs with a long history of proven field reliability, the lasers are qualified per the intent of Telcordia GR-468, can be bonded junction-up or junction-down, and offer class-leading electrical and optical performance.

With the exception of the 247E-series, all die in the table below are qualified for use in non-hermetic environments.

Ordering Information

Description	Part Number
70-mW, CW CWDM DFB laser for uncooled applications	247C-1xx
75-mW, CW 1.3- μm DFB laser for uncooled applications	247E-1310
75-mW, CW 1.49- μm DFB laser for uncooled applications	247E-1490
18-mW, CW CWDM DFB laser for uncooled applications	293L1xx
20-mW, CW 1.3- μm DFB laser for uncooled applications	293B20
20-mW, CW 1.5- μm DFB laser for uncooled applications	295P20