



**Emulex Drivers  
Version 10.0  
for Windows  
Quick Installation Manual**

Copyright © 2003-2013 Emulex. All rights reserved worldwide. No part of this document may be reproduced by any means or translated to any electronic medium without the prior written consent of Emulex.

Information furnished by Emulex is believed to be accurate and reliable. However, no responsibility is assumed by Emulex for its use; or for any infringements of patents or other rights of third parties which may result from its use. No license is granted by implication or otherwise under any patent, copyright or related rights of Emulex.

Emulex, the Emulex logo, AutoPilot Installer, AutoPilot Manager, BlockGuard, Connectivity Continuum, Convergenomics, Emulex Connect, Emulex Secure, EZPilot, FibreSpy, HBAnyware, InSpeed, LightPulse, MultiPulse, OneCommand, OneConnect, One Network. One Company., SBOD, SLI, and VEngine are trademarks of Emulex. All other brand or product names referenced herein are trademarks or registered trademarks of their respective companies or organizations.

Emulex provides this manual "as is" without any warranty of any kind, either expressed or implied, including but not limited to the implied warranties of merchantability or fitness for a particular purpose. Emulex may make improvements and changes to the product described in this manual at any time and without any notice. Emulex assumes no responsibility for its use, nor for any infringements of patents or other rights of third parties that may result. Periodic changes are made to information contained herein; although these changes will be incorporated into new editions of this manual, Emulex disclaims any undertaking to give notice of such changes.

Emulex, 3333 Susan Street  
Costa Mesa, CA 92626

Note: References to OCe11100 series products also apply to OCe11100R series products.

# Table of Contents

|   |           |
|---|-----------|
| <b>1. Introduction</b> .....                              | <b>4</b>  |
| <b>Compatibility</b> .....                                | <b>4</b>  |
| <b>Operating System Requirements</b> .....                | <b>4</b>  |
| <b>2. Driver Installation Options</b> .....               | <b>5</b>  |
| Notes: 5  |           |
| <b>OneInstall Installer</b> .....                         | <b>5</b>  |
| Notes: 5  |           |
| Loading the OneInstall Package .....                      | <b>6</b>  |
| <b>Driver Kit Installer</b> .....                         | <b>6</b>  |
| Loading the Driver Kit .....                              | <b>6</b>  |
| <b>AutoPilot Installer</b> .....                          | <b>7</b>  |
| Starting Installers from a Command Prompt or Script ..... | <b>8</b>  |
| Running a Software Installation Interactively .....       | <b>8</b>  |
| Option 1: Automatically Run AutoPilot Installer .....     | <b>8</b>  |
| Option 2: Run AutoPilot Installer Separately .....        | <b>9</b>  |
| <b>Hardware-First Installation or Driver Update</b> ..... | <b>9</b>  |
| Notes: 9  |           |
| Software-First Installation.....                          | <b>10</b> |
| Text-Only Driver Installation.....                        | <b>11</b> |
| <b>3. Installation Failure</b> .....                      | <b>12</b> |

# 1. Introduction

## Compatibility

For a complete list of adapters that are compatible with these drivers, see the driver's Downloads page on the Emulex website. For compatible firmware versions, see the Downloads page for the specific adapter.

## Operating System Requirements

One of the following operating systems must be installed on an x64 server:

**Note:** The Microsoft patch KB2846340 must be installed on your system in order for the NIC installation to be successful. If the patch is not installed on your system, the installation stops and asks you to install it. This patch from Microsoft's Knowledge Base (kb), is available for Win2012, Win2008 R2, and Win2008 SP2 on the Microsoft website.

- Windows Server 2008, Windows Server 2008 R2, Windows Server 2012, and Windows Server 2012 R2: x64 versions, Enterprise and Server Core
- Windows 7 Ultimate, Enterprise, or Professional edition (x64 only; supported on only OneConnect™ OCe1110x Universal Converged Network Adapters (UCNAs))
- Windows 8 x64 base version, Pro and Enterprise (x64 only; supported on only OCe1110x UCNAs)

**Note:** Windows 7 and Windows 8 drivers are Emulex-signed. You must accept the Emulex certificate to install these client kits; support is provided by Emulex, but not by Microsoft.

**Note:** Check the Emulex website for required updates to the Windows operating system or the Emulex drivers.

## 2. Driver Installation Options

There are two ways that you can install the Windows drivers:

- OneInstall Installer contains all the Emulex Windows drivers (Emulex Storport Miniport and NDIS Miniport drivers) and the OneCommand Manager application in a single download package.
- Driver kits and AutoPilot Installer provide installation options ranging from simple installations with a few mouse clicks to unattended installations that use predefined script files and text-only installations.

### Notes:

- If you are installing the NIC driver kit as an update to the WS2012 driver, some parameter defaults are different from the inbox driver. Emulex recommends that, after you install the Emulex out-of-box driver, you select “reset to default” on the Advanced tab of Device Manager property page. This returns all adapter and driver settings to the default values listed in this manual.
- Low performance can result when the Emulex NIC driver is installed on a system meeting the following conditions before installing Microsoft KB2846837:
  - A Windows 8-based or Windows Server 2012-based computer with multi-core processors is in use.
  - Three or more Ethernet ports are installed on the computer.
  - Receive Side Scaling (RSS) is enabled and sets the RSS profile to use the “Closest” parameter for the Ethernet adapters.

If these three conditions exist, install KB2846837 before installing the Emulex NIC driver.

## OneInstall Installer

The OneInstall package is a self-extracting executable file that installs the following software on your system:

- All compatible protocol drivers:
  - Fibre Channel (FC)
  - Fibre Channel over Ethernet (FCoE)
  - internet Small Computer System Interface (iSCSI)
  - Network Interface Card or Controller (NIC)
- ElxPlus driver (supports the OneCommand Manager application, persistent binding, and LUN mapping and masking)
- OneCommand Manager application (management utility for Emulex adapters)

### Notes:

- The Enterprise kit for the OneCommand Manager application does not operate locally on Windows Server Core. You must install the OneCommand Manager Core Kit (command-line interface only) to the Windows Server Core.

- The OneInstall Installer does not allow you to perform pre-installation tasks, unattended installations, or text-only installations. For these tasks, use the AutoPilot Installer kits.

## Loading the OneInstall Package

To install the drivers using the OneInstall package:

1. Download the OneInstall package from the Emulex website.
2. Navigate to the OneInstall package in Windows Explorer.
3. Double-click the OneInstall package. The Welcome screen appears.
4. Click **Next**. The Installation options screen appears.
5. Select the drivers and application that you want to install and click **Next**.

A progress screen appears while the OneInstall installer loads the selected drivers and applications. When the drivers and application software are loaded, an Installation completed screen appears.

6. Click **Finish**.

## Driver Kit Installer

Each driver kit contains and loads all the Windows drivers for a specific protocol, and includes ElxPlus.

- FC driver package (elxdrv-fc-<version>.exe)
- FCoE driver package (elxdrv-fcoe-<version>.exe)
- iSCSI driver package (elxdrv-iscsi-<version>.exe)
- NIC driver package (elxdrv-nic-<version>.exe)

**Note:** Updating the NIC protocol driver may temporarily disrupt operation of any NIC teams configured on the system.

## Loading the Driver Kit

The driver kit copies the selected Emulex drivers and applications onto your computer.

**Note:** This procedure does not install drivers, and no driver changes are made until you run the AutoPilot Installer.

To load the driver kit:

1. Download the driver kit from the Emulex website to your system.
2. Double-click the driver kit to run it. The Emulex Kit Welcome page opens.
3. Click **Next**. The Installation Options page opens.
4. Select one or both of the following options:
  - Perform Installation of Software - copies the driver kit for your operating system to your computer.

- Unpack All Drivers - extracts all drivers to the current user's documents folder. Select this option to perform boot from SAN installations.

The Operation in progress page shows the kit file loading progress. When the kit files are loaded, the Installation completed page opens.

5. If you want to continue with the installation, ensure that Start AutoPilot Installer is checked. Click **Next**.

## AutoPilot Installer

AutoPilot Installer runs after the driver kit is loaded and the OneCommand Manager application is installed. AutoPilot Installer can be installed:

- Immediately after the driver kit has been loaded
- At a later time using an interactive installation
- Through an unattended installation

AutoPilot Installer provides:

- Command line functionality - Initiates an installation from a command prompt or script. Configuration settings can be specified in the command line.
- Compatibility verification - Verifies that the driver to be installed is compatible with the operating system and platform.
- Driver installation and update - Installs and updates drivers.
- Multiple adapter installation capability - Installs drivers on multiple adapters, alleviating the need to manually install the same driver on all adapters in the system.
- Driver diagnostics - Determines whether the driver is operating properly.
- Silent installation mode - Suppresses all screen output (necessary for unattended installation).

**Note:** AutoPilot Installer does not allow you to install the driver if the minimum Windows service pack or Microsoft Storport driver update is not installed.

You can install the driver by any of the following methods:

**Note:** These installation methods are not mutually exclusive.

- **Hardware-first installation.** At least one Emulex adapter must be installed before you can install the Emulex drivers and utilities.
- **Software-first installation.** You can install drivers and utilities using AutoPilot Installer prior to the installation of any adapters. You do not need to specify the adapter models to be installed later. The appropriate drivers and utilities automatically load when you install the adapters.
- **Utility Only installation.** If the drivers in the driver kit share the same version with those already installed on the system, you can reinstall or update the previously installed utility without reinstalling the drivers.
- **Text-Only installation.** Text-based installation mode is used automatically when AutoPilot Installer is run on a Server Core system.

- **Network installation.** You can place the driver kit installers on a shared network drive and install them across your local area network (LAN). Network-based installation is often used in conjunction with unattended installation and scripting. This allows you to configure and install the same driver and utility versions on all the hosts in a storage area network (SAN).
- **Unattended installation.** You can run the driver kit installers and AutoPilot Installer with no user interaction from a command line or script. Unattended installation works for both hardware-first and software-first installations and all driver kits. An unattended installation operates in silent mode (also referred to as quiet mode) and creates an extensive report file with installation status.

**Note:** Complete driver and utilities documentation may be downloaded from the Emulex website ([www.emulex.com](http://www.emulex.com)). Click **Downloads** at the top of the web page and navigate by clicking the appropriate links.

## Starting Installers from a Command Prompt or Script

When a driver kit or AutoPilot Installer is run from a command prompt or command script (batch file), the Windows command processor does not wait for the installer to run to completion. As a result, you cannot check the exit code of the installer before the next command is executed. Emulex recommends that for command line invocation, always use the “start” command with the “/wait” option. This causes the command processor to wait for the installer to finish before it continues.

For more information on command line installation and configuration parameters, see the AutoPilot Installer Command Line and Configuration File Parameters topic in the *Emulex Drivers for Windows User Manual*.

## Running a Software Installation Interactively

There are two options when performing an installation interactively. These options assume you have already downloaded the driver kit installer from the Emulex website.

### Option 1: Automatically Run AutoPilot Installer

Use this option unless you have specific configuration needs.

1. Double-click the driver kit or run it from a command line. The command line parameter APargs allows you to specify arguments that are automatically passed to the AutoPilot Installer command. A Welcome page is displayed with driver kit version information and Emulex contact information (see the AutoPilot Installer Command Line and Configuration File Parameters topic in the *Emulex Driver for Windows User Manual* for more information on command line installations).
2. Click **Next** to proceed to the Installation Options page.  
For each installation option, the default installation location for that option is displayed. Browse to a different location, if desired.
3. Click **Install** to continue the installation.

The Progress dialog box is displayed. After all tasks complete, a Finish page is displayed. The Start AutoPilot Installer box is automatically selected.



4. Click **Finish**. AutoPilot Installer is run automatically. AutoPilot Installer completes one of the installations:
  - Hardware-First Installation or Driver and Utility Update (page 9).
  - Software-First Installation (page 10).

## Option 2: Run AutoPilot Installer Separately

To access these options, run AutoPilot Installer after the driver kit loading has been completed. This allows you to change the configuration options supplied to the AutoPilot Installer.

1. Perform steps 1 through 3 for “Option 1: Automatically Run AutoPilot Installer”
2. Clear the **Run AutoPilot Installer** check box on the Finish dialog box.
3. Click **Finish**. The driver kit installer exits.

After the driver kit loading is complete, change the configuration in one of two ways:

- Change the configuration file.
- Supply parameters on the command line.

**Note:** See the AutoPilot Installer Command Line and Configuration File Parameters topic in the *Emulex Drivers for Windows User Manual* for more information on either of these configuration methods.

Once you have finished this step, you can run AutoPilot Installer at a later time, using either of the following methods:

**Note:** If you are supplying options via the command line, you must run AutoPilot Installer from the command line.

- Select **Programs>Emulex>AutoPilot Installer** in the Start menu.
- Run AutoPilot Installer from a command line by running:

```
C:\Program Files\Emulex\AutoPilot Installer\APInstall.exe
```

**Note:** The location of APInstall.exe may differ on your system, depending on your system's Program Files location. You may also specify a different location when you install the driver package.

## Hardware-First Installation or Driver Update

The driver kit installer must be downloaded from the Emulex website and installed.

### Notes:

- Updating the NIC protocol driver may temporarily disrupt operation of any NIC teams configured on the system.
- To update the Emulex protocol drivers, begin this procedure at step 2.

To perform a hardware-first installation:

1. Install a new Emulex adapter and power-on the system. If the Windows Found New Hardware wizard is displayed, click **Cancel** to exit. AutoPilot Installer performs this function.

**Note:** If there are multiple adapters in the system, the Windows Found New Hardware wizard appears multiple times. Click **Cancel** to exit the wizard each time it appears.

2. Run AutoPilot Installer using any of the options listed in “Running a Software Installation Interactively” on page 8.
3. When the AutoPilot Installer Welcome page appears, select an adapter in the list and click **Next**. Installation continues.

Consider the following:

- If you are updating the driver, the existing port settings are used, unless otherwise specified in the configuration file. These settings are pre-selected but can be changed. Set or change settings, then click **Next**.
  - If you are **initially** installing a vendor-specific version of the Emulex driver installation program, a Driver Configuration page may be displayed. This page includes one or more windows with questions that you must answer before continuing the installation process. In this case, answer each question and click **Next** on each window to continue.
4. Click **Next**. The installation is completed automatically. A dialog box is displayed if Windows requires a reboot. Once the installation is successful, a Finish page appears.
  5. View or print a report, if desired.
    - View Installation Report – The installation report is a text file with current Emulex adapter inventory, configuration information and task results.
    - Print Installation Report – The Windows print dialog is displayed to select options for printing the installation report.
  6. Click **Finish** to exit AutoPilot Installer. If the system needs to be rebooted, you are prompted to do so as indicated in step 4; you must reboot before using the drivers or utilities.

## Software-First Installation

The driver kit must be downloaded from the Emulex website and loaded. Either the full or core driver package may be installed; only one can be installed on a system.

To perform a software-first installation:

1. Run AutoPilot Installer using any of the options listed in “Running a Software Installation Interactively” on page 8. Figure 2-1 appears:

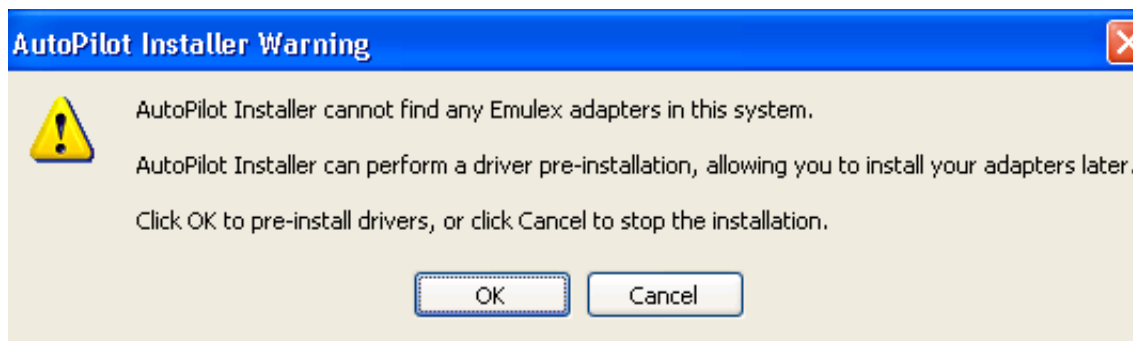


Figure 2-1 AutoPilot Installer Warning (Software-First Installation)

2. Click **OK**. A Welcome page appears.
3. Click **Next**. The installation automatically progresses. Once the installation is successful, the Finish Page appears.
4. View or print a report, if desired.
  - View Installation Report – The installation report is a text file with current Emulex adapter inventory, configuration information and task results.
  - Print Installation Report – The Windows print dialog is displayed to select options for printing the installation report.
5. Click **Finish** to exit AutoPilot Installer.

## Text-Only Driver Installation

Text-based installation mode is used automatically when the driver kit installer runs on a server with the Server Core installation option of Windows Server. During text-based installations, AutoPilot Installer uses a command prompt window. The driver kit installer notifies you when the driver is installed and also gives you a chance to stop the installation.

Whether AutoPilot installer is launched from the command line or run as a program, Windows always starts AutoPilot Installer as a separate stand-alone task. This means that AutoPilot Installer has its own command prompt window and cannot access others.

## 3. Installation Failure

If the installation fails, the Diagnostics window shows that the adapter failed. If the adapter fails:

1. Select the adapter to view the reason why the adapter failed. The reason and suggested corrective action are displayed.
2. Perform the suggested corrective action and run AutoPilot Installer again.

**Note:** AutoPilot Installer can be run again from the Start menu (Programs>Emulex>AutoPilot Installer) or APInstall.exe can be run from a command prompt.