



Applicable to the:

MegaRAID Value Line  
9260-xx Controllers

MegaRAID Feature Line  
9280-xx Controllers

## MegaRAID® Release 4.4

MegaRAID Release 4.4 bundles elements across four key cornerstones of leadership, including: Features and Usability, Performance, Green, and Data Protection and Availability. Focusing on the latest technology trends and customer requirements, these four cornerstones reaffirm LSI's commitment to customer success and industry leadership.

The new features and functions specifically related to MegaRAID Release 4.4 include:

- **Advanced software:** MegaRAID CacheCade™ software support
- **LSI 620J / 630J JBOD support**
- **New OS support:** FreeBSD, VMware ESXi and Solaris10 for SPARC
- **MegaRAID Storage Manager (MSM) usability improvements**

*The MegaRAID SAS 9260-xx and 9280-xx series controllers are supported under Release 4.4. To download the latest MegaRAID Release, visit [lsi.com/support](http://lsi.com/support)*

### PERFORMANCE



#### Support for CacheCade Advanced Software Key

Advanced software key support is the ability of MegaRAID to recognize a hardware RAID key physically installed on the board and enable specific functionality. LSI advanced software keys

are upgrades designed to optimize application performance and enhance support for emerging technologies. These features will be sold a la carte to customers that are interested in the functionality. In a future release, hardware keys will no longer be required. Instead, a software key, purchased online, will allow immediate activation without requiring that the server be opened.

Advanced software options include MegaRAID FastPath™ software, MegaRAID Recovery software, MegaRAID CacheCade software and MegaRAID SafeStore™ software.

#### About CacheCade Software

CacheCade software allows users to utilize SSDs in front of hard disk drives (HDDs) to create high-capacity, high-performance controller cache, up to 512GB. Using SSDs as controller cache allows for

very large data sets to be present in cache to deliver up to a 50X performance improvement in read-intensive applications, such as file, Web, OLTP and database server. The solution is designed to provide a substantial performance upgrade while only requiring a small investment in SSD technology.

CacheCade software tiered cache for cost-effective SSD optimization allows customers to blend together inexpensive SATA+SAS hard drives with a small amount of solid-state storage capacity, to provide a substantial performance boost while avoiding complete 1:1 replacements.

#### LSI 620J / 630J JBOD Support

MegaRAID Release 4.4 now supports LSI 6Gb/s SATA and SAS JBOD storage enclosures. They are a key storage building block for deploying affordable, scalable and high-performance storage solutions. Designed to meet the needs of relentless data growth and reliability, LSI 600 series JBODs support a "start small, grow big" strategy by enabling users to connect these enclosures to LSI storage adapters for extremely scalable storage. JBODs from LSI are a great companion for MegaRAID storage adapters, allowing for faster installation, smoother deployment and reduced validation time and costs.

## DATA PROTECTION AND AVAILABILITY



### CacheCache Software and JBOD Support

With support for CacheCache software and new LSI 600 series JBODs, MegaRAID Release 4.4 allows users greater data availability by providing an extra large cache for fast access and higher data

protection by permitting the use of more disks, which could be used in a new RAID set-up such as RAID 6.

## FEATURES AND USABILITY



### MegaRAID Storage Manager Usability Improvements

There have been a number of improvements to the LSI MegaRAID Storage Manager™ (MSM) that increase the simplicity and execution of management functions. With the

addition of these improvements, administrators are now able to minimize the time required to perform tasks, freeing up resources in the data center.

#### Dashboard View

MegaRAID Storage Manager now includes a Dashboard View that provides critical, top-level information about array status, available capacity, enabled features, and online help. Presented as a tab with the Physical and Logical views, users can initiate major actions, such as firmware updates or virtual drive creation. The MSM Dashboard view provides administrators with a quick method to monitor the RAID array while also managing basic tasks.

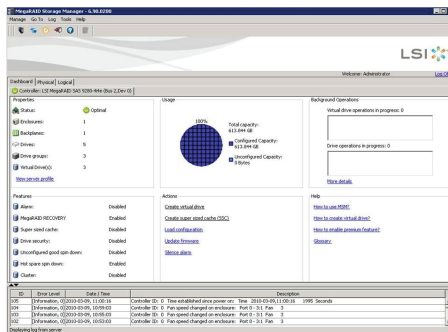
#### Enabling Drive Security with SafeStore Software

Further improvements have also been made to the SafeStore software. The new "Enable Drive Security" screen within the SafeStore software minimizes confusion and time required to bring

encrypted drives and controllers online by condensing a number of steps into a quick, easy-to-read form for assigning keys and passwords.

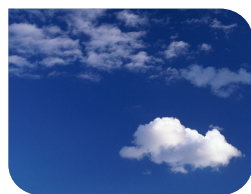
### New OS support: FreeBSD, VMware ESXi and Solaris10 for SPARC

In addition to the above, 6Gb/s SATA+SAS 9260-xx and 9280-xx controllers now feature support for even more operating systems, including FreeBSD, VMware ESXi and Solaris10 for SPARC. By providing the tools that our customers need, LSI continues to prove its dedication to the channel.



MegaRAID Storage Manager Dashboard View

## GREEN



LSI is committed to providing environmentally-friendly products to you. While there are no new Green features in Release 4.4, we continue to strive for excellence in this area by

maintaining RoHS-compliance for all of our products — certain storage adapters are even Halogen-free.

For more information and sales office locations, please visit the LSI web sites at:

lsi.com lsi.com/channel

LSI, LSI and Design logo, CacheCache, MegaRAID, MegaRAID Management Suite, MegaRAID Storage Manager, SafeStore, and SSD Guard are trademarks or registered trademarks of LSI Corporation. All other brand and product names may be trademarks of their respective companies.

LSI Corporation reserves the right to make changes to any products and services herein at any time without notice. LSI does not assume any responsibility or liability arising out of the application or use of any product or service described herein, except as expressly agreed to in writing by LSI; nor does the purchase, lease, or use of a product or service from LSI convey a license under any patent rights, copyrights, trademark rights, or any other of the intellectual property rights of LSI or of third parties.

Copyright ©2010 by LSI Corporation. All rights reserved.  
April 2010

