



Storage. Networking. Accelerated.™

Syncro® CS 9286-8e Controller

Quick Installation Guide

October 2013

54127-00, Rev. B



54127-00B

Revision History

Version and Date	Description of Changes
54127-00, Rev. B, October 2013	Revised the document format and the figures.
54127-00, Rev. A, March 2013	Initial release of the document.

LSI, the LSI & Design logo, Storage.Networking.Accelerated., CacheVault, MegaRAID, MegaRAID Storage Manager, and Syncro are trademarks or registered trademarks of LSI Corporation or its subsidiaries. PCI Express and PCIe are registered trademarks of PCI-SIG. All other brand and product names may be trademarks of their respective companies.

LSI Corporation reserves the right to make changes to the product(s) or information disclosed herein at any time without notice. LSI Corporation does not assume any responsibility or liability arising out of the application or use of any product or service described herein, except as expressly agreed to in writing by LSI Corporation; nor does the purchase, lease, or use of a product or service from LSI Corporation convey a license under any patent rights, copyrights, trademark rights, or any other of the intellectual property rights of LSI Corporation or of third parties. LSI products are not intended for use in life-support appliances, devices, or systems. Use of any LSI product in such applications without written consent of the appropriate LSI officer is prohibited.

Corporate Headquarters
San Jose, CA
800-372-2447

Website
www.lsi.com

Document Number: 54127-00, Rev. B
Copyright © 2013 LSI Corporation
All Rights Reserved

Syncro® CS 9286-8e Controller Quick Installation Guide

1 Installation Instructions

The Syncro® CS 9286-8e controller is a component of the LSI® High-Availability Direct Attached Storage (HA-DAS) solution, which provides fully redundant shared storage and continuous application uptime with less cost and complexity compared to existing HA solutions.

The Syncro CS 9286-8e solution provides two controllers, each with CacheVault® module for cached data protection in case of host power loss or server failure. Each controller is installed in a separate server.

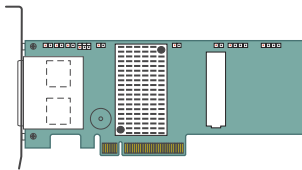
Before you install your Syncro CS 9286-8e controllers, take a few minutes to read this quick installation guide. This guide describes the basic steps to perform to install your Syncro CS 9286-8e controller and SAS drives, configure shared storage and drive groups, install drivers, and use the management utilities.

1. Verify the contents of the Syncro CS 9286-8e kit.

Your Syncro CS 9286-8e kit should contain the items shown in the following figure.

Figure 1 Contents of the Syncro CS 9286-8e Kit

LSI Syncro CS 9286-8e Controllers (2)
with CVFM02 Module (2) pre-installed



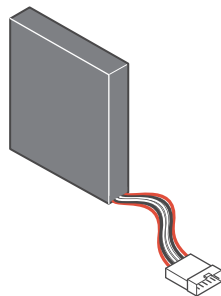
Syncro CS Resource CD



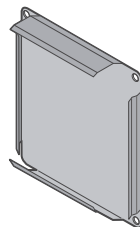
Brackets (2)



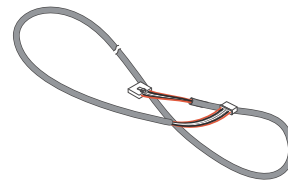
CVPM02 Power Modules (2)



Power Module Mounting Clips (2)



Power Module Cables (2)



Power Module Mounting Clip
Screws (3)



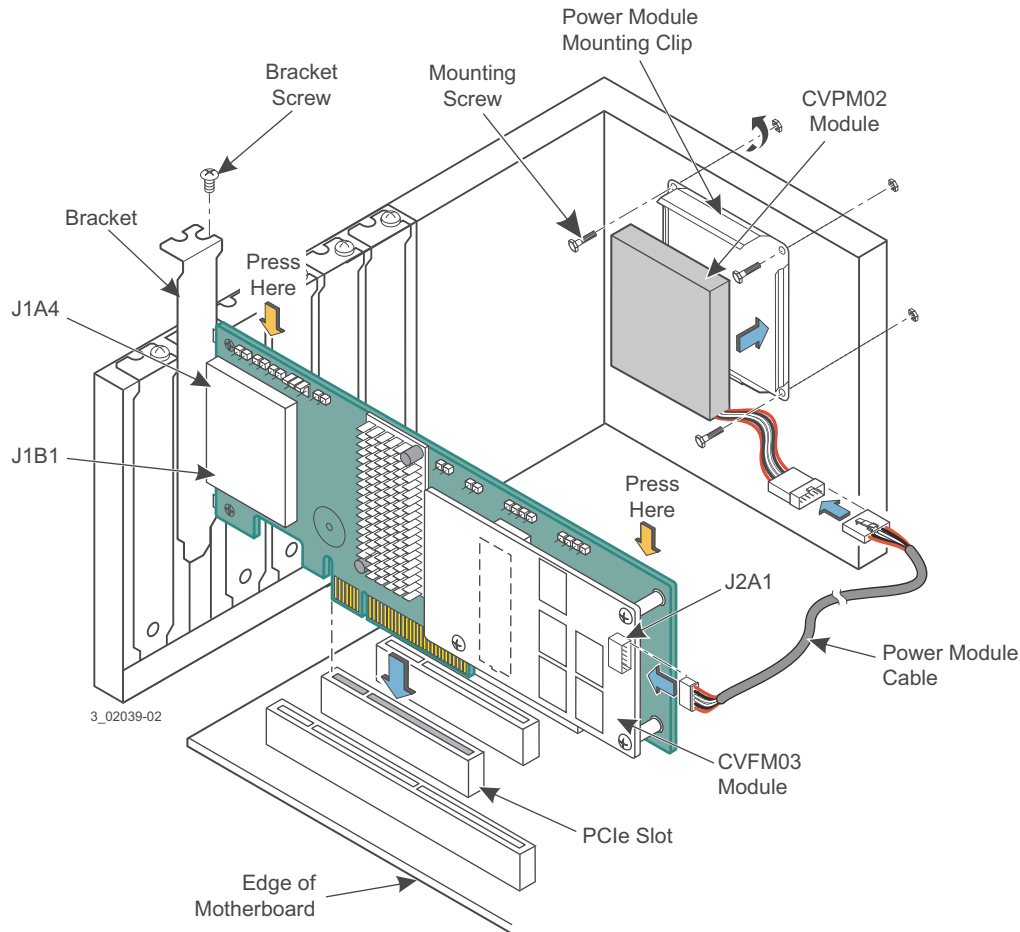
Power Module Mounting Clip
Nuts (3)



2. Install the Syncro CS 9286-8e controller assemblies.

Turn off the host computer, and unplug the power cords from the rear of the power supply. Remove the cover from the host computer. Install the controller and assemblies as shown in the following figure.

Figure 2 Installing the Syncro CS 9286-8e Controller Assemblies



NOTE Because server and workstation chassis vary from vendor to vendor, no standard mounting option exists for the CVPM02 module that is compatible with the various system configurations. Authorized resellers and chassis manufacturers can customize the location of the power module to provide the most flexibility in various environments.

NOTE Refer to the *Syncro CS 9286-8e Solution User Guide* on the *Syncro CS Resource CD* for more detailed hardware setup instructions. If you want to replace a bracket, refer to the *Replacing Brackets on MegaRAID® SAS+SATA RAID Controllers Quick Installation Guide* for instructions.

3. Repeat step 2 for the second Syncro CS 9286-8e controller.

4. Reinstall the covers of the two host computers, and mount the servers in the rack.

5. Configure and install the SAS devices in the JBOD enclosure or enclosures.

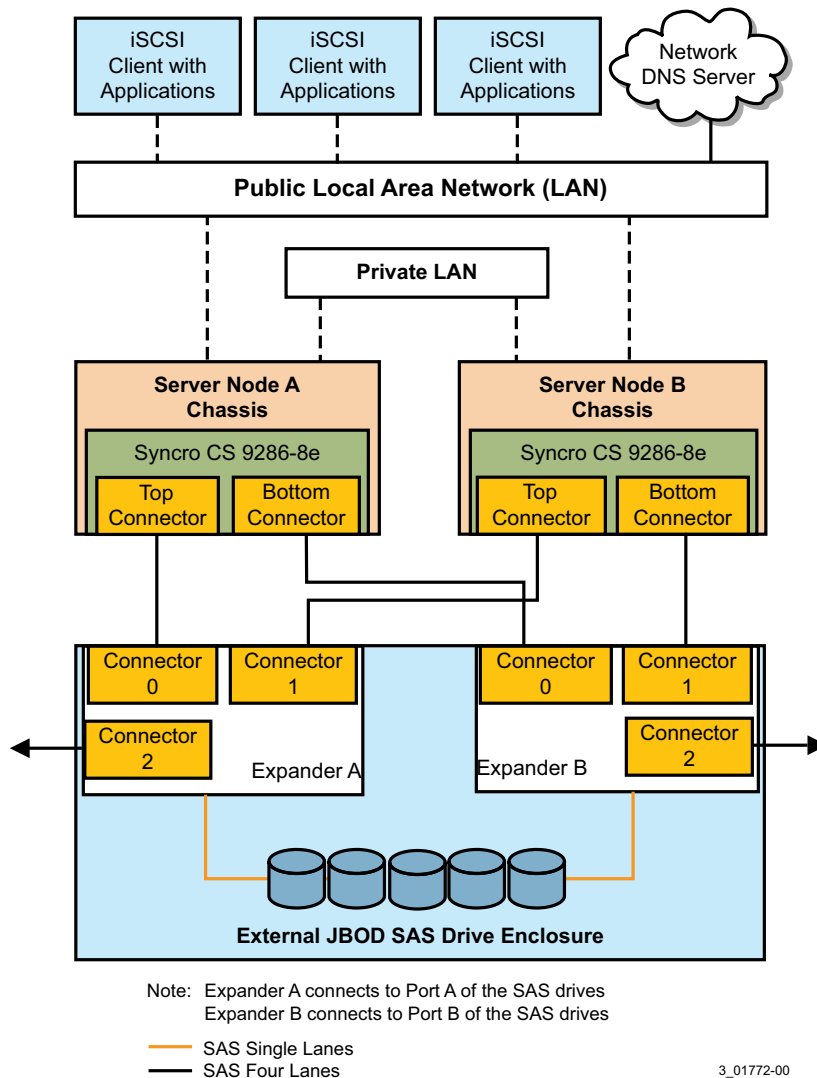
Refer to the documentation for the devices for any pre-installation configuration requirements.

NOTE Drives that are used in the LSI Syncro CS solution must be selected from the list of compatible SAS drives that LSI maintains on its website at <http://www.lsi.com/channel/support/pages/interoperability.aspx>. You also can ask your drive vendor.

6. Connect the external ports on the controllers by cable to the JBOD enclosure.

Use SAS cables to connect the external connectors J1A4 (top connector) and J1B1 (bottom connector) on the Syncro CS 9286-8e controllers to the JBOD enclosures containing the SAS drives, as shown in the following configuration diagram. Make sure that both cables from an expander connect to either the same top connectors or the same bottom connectors on each controller.

Figure 3 Syncro CS 9286-8e Shared Storage Configuration



7. Connect the servers to the cluster network environment.

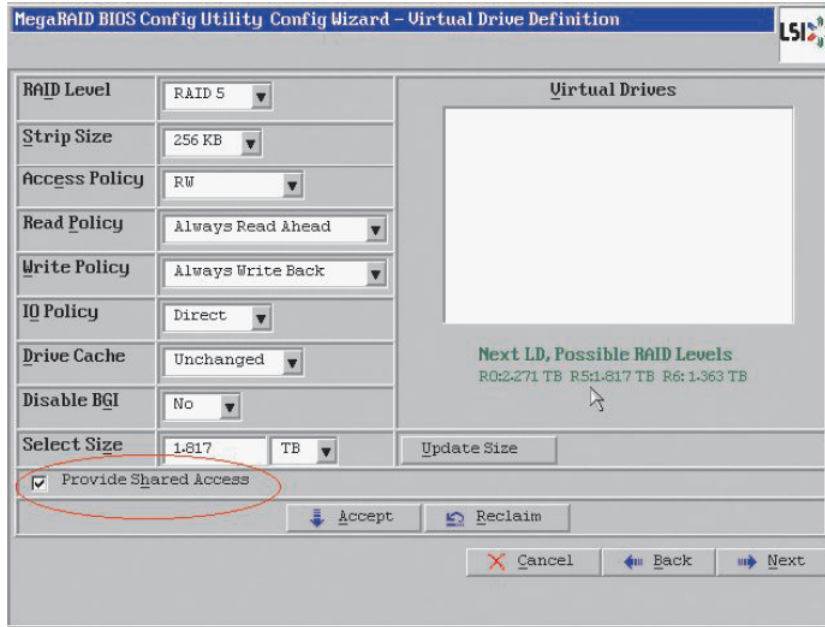
8. Turn on the power to the host computers and the enclosure.

Reconnect the power cords. Follow the generally accepted best practice by turning on the power to the JBOD enclosure before you turn on the power to the two host computers. If you turn on the power to the computers before you turn on the power to the JBOD enclosure, the host computers might not recognize the disk drives.

9. Configure the groups and the virtual drives on the two controllers.

You can use the WebBIOS configuration utility to create drive groups and virtual drives (VDs) in the pre-boot environment. Other configuration utilities, such as StorCLI and MegaRAID Storage Manager™, are available for operating system-level storage management. The following figure shows the Virtual Drive Definition screen in the WebBIOS utility.

Figure 4 Virtual Drive Definition Screen



10. Install the operating system driver on both server nodes.

The controller can operate under various operating systems, but you must install the software drivers first.

LSI frequently updates the supported operating systems and the latest drivers for the Syncro CS controllers. To make sure that you have the current version of your driver, download the driver from the LSI website at <http://www.lsi.com/support/Pages/download-search.aspx>. Access the download center, and follow the steps to download the appropriate driver.

Refer to the *MegaRAID SAS Device Driver Installation User Guide* on the *Syncro CS Resource CD* for more information about installing the driver. Be sure to use the latest service packs that are provided by the operating system manufacturer and to review the `readme` file that accompanies the driver.

11. Install the Failover Cluster feature on both servers.

Refer to the *Syncro CS 9286-8e Solution User Guide* on the *Syncro CS Resource CD* for detailed instructions.

2 Technical Support

For assistance in installing, configuring, or running the Syncro CS 9286-8e controller, contact an LSI Technical Support representative. Visit the following link to access the LSI Technical Support page for storage and controller support: <http://www.lsi.com/about/contact/pages/support.aspx>.

You can access LSI Technical Support at the following phone numbers:

- North America: 800-633-4545
- International: 00-800-5745-6442
- Germany: + 49 (0) 89 45833-113



Storage. Networking. Accelerated.™