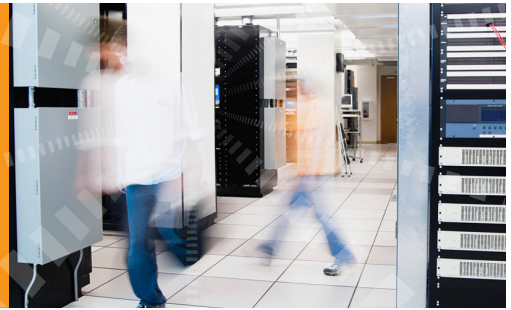


# MegaRAID Management Suite™

## MegaRAID Storage Manager™, MegaCLI, WebBIOS



### MegaRAID Storage Manager Key Features

- Dynamic discovery of servers
- Remote management functions
- Color-coded icons display server and controller status
- Modular management framework supports plug-in of future management features
- Multi-level security authentication limits the users who can configure the storage systems across the IP network
- Asynchronous event notification
- Server-push technology
- Save and load saved-configuration
- Easy view of pertinent information
  - Controller product name
  - Firmware revision
  - BIOS revision
  - Memory size
  - Product type
  - Battery status
- Extensive monitoring of battery properties
  - Present/not present
  - Capacity level
  - Charging status
  - Battery temperature
  - Number of battery charge cycles
  - Battery type
- Patrol read function to detect bad disk blocks
- Easy-to-Use configuration wizard
  - Create and/or add new arrays
  - Automatic, custom, or assisted configuration options

Enterprise-Level RAID Management for a Complete Family of MegaRAID Serial Attached SCSI (SAS) Adapters

### Advanced RAID Management Suite

The MegaRAID Management Suite™ provides the must-have software components to efficiently manage MegaRAID products, whether deployed in an enterprise or small business. The collection of applications and tools includes a pre-boot setup utility as well a full spectrum of online RAID management utilities. This new suite of applications allow administrators to adjust SAS topology views from the system host, controller and disk enclosure down to the logical and physical drive level. Extending to enterprise deployments, the powerful tools easily scale to efficiently configure, monitor and manage RAID volumes locally or over the LAN network.

The MegaRAID Management Suite includes MegaRAID Storage Manager for graphical OS control, MegaCLI for a powerful Command Line Interface and WebBIOS for pre-OS-boot controller and storage configuration.

### MegaRAID Storage Manager

MegaRAID Storage Manager (MSM) is an advanced RAID array configuration and management application designed to address the most complex SAS storage topologies. MSM enables administrators to configure, monitor and maintain MegaRAID SAS adapters and the devices connected to them. Its graphical user interface (GUI) makes it easy to create and manage storage configurations.

### Configuration Functions

The MSM Configuration Wizard greatly simplifies the process of creating disk arrays and virtual disks. With Auto Configuration mode, users can automatically create the best possible configuration, given the available hardware. Manual Configuration mode is also supported for complete user control, as well as Guided Configuration mode which asks brief questions about the user's desired configuration in order to create it for them.

### Monitoring Functions

Monitoring of vital information such as the status of virtual disks, physical disks and other devices, is critical for server and workstation environments. System errors and events are recorded and viewable in the MSM event log. Specific device icons also appear onscreen to notify the user of events such as disk failures and other critical events.

- Enclosure management support
  - Fan temperature (C° and F°)
  - Voltage levels
  - Enclosure properties
  - Power supply status
- Support for online RAID migration
- Support for online RAID expansion
- Ability to update firmware on any selected RAID server on the intranet
- Support for remote alert notification via
  - Pop-ups
  - Pager
  - Email
- SNMP agents and CIM data providers allow for integration with network management applications
- Built-on new StoreLIB API

### Maintenance Functions

MegaRAID Storage Manager can easily perform system maintenance tasks such as updating firmware and running consistency checks on arrays that support redundancy.

Enhanced environmental maintenance functions are also available with MSM, including patrol read which detects and marks bad disk blocks, array consistency checks on redundant arrays, and installation of firmware updates. Extensive intelligent battery monitoring, maintenance and alert capabilities are also available. This includes battery temperature and capacity monitoring as well as battery recalibration operations to maintain battery health.

### MegaCLI

The MegaCLI Configuration Utility is a command line alternative to MegaRAID Storage Manager offering similar online configuration, monitoring and management capabilities. With MegaCLI, administrators can also create and use scripts with the scriptable CLI tool. In addition, this utility can be used to send PassThru commands to storage devices and flash MegaRAID firmware as well as run controller, battery and NVRAM diagnostics.

### Operating System Support for MSM and MegaCLI

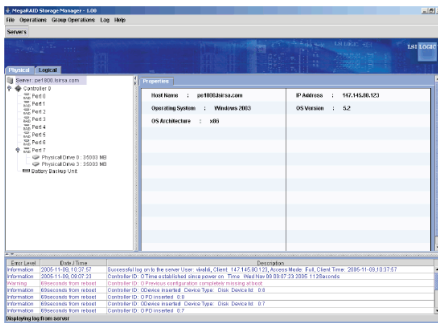
MegaRAID Storage Manager and MegaCLI are supported under most major operating systems. Please visit LSI download center at [lsi.com/support](http://lsi.com/support) for the latest supported operating systems.

### WebBIOS

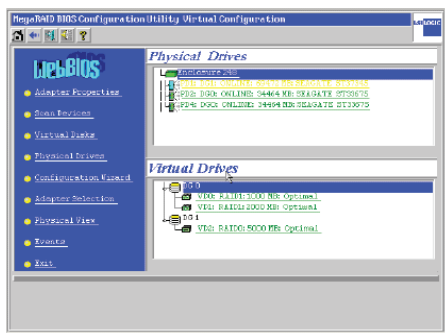
The WebBIOS utility enables you to create and manage RAID configurations on LSI SAS controllers. Unlike the MegaRAID Storage Manager software, WebBIOS resides in the SAS controller BIOS and operates independently of the operating system.

The WebBIOS utility supports the following tasks:

- Create physical arrays and logical drives for storage configurations
- Delete virtual disks
- Migrate a storage configuration to a different RAID level
- Detect configuration mismatches
- Import a foreign configuration
- Display adapter, virtual disk, physical drive, and battery backup unit (BBU) properties
- Scan devices connected to the controller
- Initialize virtual disks
- Check configurations for data consistency



MegaRAID Storage Manager Main Window



WebBIOS Main Window

WebBIOS also provides a configuration wizard as a guide through the configuration of logical drives and physical arrays. The following configuration options are supported through the wizard:

- Clear Configuration: clears the existing configuration
- New Configuration: clears the existing configuration and allows for the creation of a new configuration
- Add Configuration: retains the existing storage configuration and adds new drives to it without risking any loss of data



For more information and sales office locations, please visit the LSI website at: [www.lsi.com](http://www.lsi.com)

**North American Headquarters**  
 San Jose, CA  
 T: +1.866.574.5741 (within U.S.)  
 T: +1.408.954.3108 (outside U.S.)

**LSI Europe Ltd.**  
**European Headquarters**  
 United Kingdom  
 T: [+44] 1344.413200

**LSI KK Headquarters**  
 Tokyo, Japan  
 T: [+81] 3.5463.7165

LSI, the LSI & Design logo, and the Storage.Networking.Accelerated. tagline are trademarks or registered trademarks of LSI Corporation. All other brand or product names may be trademarks or registered trademarks of their respective companies.

LSI Corporation reserves the right to make changes to any products and services herein at any time without notice. LSI does not assume any responsibility or liability arising out of the application or use of any product or service described herein, except as expressly agreed to in writing by LSI; nor does the purchase, lease, or use of a product or service from LSI convey a license under any patent rights, copyrights, trademark rights, or any other of the intellectual property rights of LSI or of third parties.