

MegaRAID[®] SAS Device Driver Installation

User Guide

Revision 2.3

September 8, 2015

DB15-001203-03

For a comprehensive list of changes to this document, see the [Revision History](#).

Corporate Headquarters

San Jose, CA

Email

globalsupport.pdl@avagotech.com

Website

www.avagotech.com

Avago Technologies, the A logo, MegaRAID, and MegaRAID Storage Manager are trademarks of Avago Technologies in the United States and other countries. All other brand and product names may be trademarks of their respective companies.

Data subject to change. pub-005116. Copyright © 2006–2015 Avago Technologies. All Rights Reserved.

Table of Contents

Chapter 1: Overview	5
1.1 Driver Description	5
1.1.1 Driver Functions	5
1.1.2 Driver Updates	6
1.2 Driver Names	6
Chapter 2: Windows Driver Installation	9
2.1 MegaRAID Primary Storage	9
2.1.1 Storage Configuration	9
2.1.1.1 Creating Storage Configuration Using WebBIOS	9
2.1.1.2 Creating Storage Configuration Using Ctrl-R	12
2.2 Primary OS Storage on the MegaRAID Controller	14
2.3 Drivers and Operating Systems	14
2.4 Secondary Storage on the MegaRAID Controller with the Windows 2008 OS	15
2.5 Using the Device Manager to Install MegaRAID on the Windows 2008 OS	15
2.6 Installing a MegaRAID Driver on the Microsoft Windows 8 OS	16
2.6.1 Driver Upgrades	16
2.7 Installing a MegaRAID Driver on the Windows Server 2012 Operating System	19
2.7.1 Upgrading the Driver for the Windows Server 2012 Operating System	20
Chapter 3: Red Hat Linux Driver Installation	24
3.1 Installing the Driver in a New Red Hat Enterprise Linux 5.x, 6.x, or 7.x OS	24
3.1.1 Installing from a CD or a DVD	24
3.1.2 Creating a Driver Update Disk with a USB Drive	24
3.1.3 Installing from a Driver Update Diskette	25
3.2 Installing the Red Hat Enterprise Linux 5.x, 6.x, or 7.x Driver in an Existing Installation	25
3.3 Installing or Updating the Red Hat Linux System Driver	26
3.3.1 Installing or Updating the Driver by Using the Generic RPMs	26
3.3.2 Installing or Updating the Driver by Using the DKMS RPMs	26
3.4 Uninstalling the Red Hat System Driver	27
Chapter 4: SUSE Linux Enterprise Server (SLES) Driver Installation	28
4.1 Installing the Driver in a New SUSE Linux Enterprise Server System	28
4.1.1 Installing from a CD or a DVD	28
4.1.2 Creating a Driver Update Disk with a USB Drive	28
4.1.3 Installing from a Driver Update Diskette	29
4.2 Installing or Updating the SUSE Linux Enterprise Server Driver	29
4.2.1 Installing the Driver by Using the Generic RPMs	29
4.2.2 Installing or Updating the Driver by Using the DKMS RPMs	30
4.3 Uninstalling the SUSE Linux Enterprise Server Driver	30
Chapter 5: Ubuntu Linux Driver Installation	31
5.1 Installing the Driver in a New Ubuntu Linux LTS OS	31
5.2 Removing the Driver in a New Ubuntu Linux LTS OS	32
Chapter 6: FreeBSD Driver Installation	33
6.1 Avago MegaRAID Drivers and Software for the FreeBSD OS	33
6.2 Obtaining Avago FreeBSD Drivers	34
6.3 Creating a FreeBSD OS Driver Diskette	34
6.4 Installing the FreeBSD OS on Storage Managed by a MegaRAID Controller (Primary Storage)	34
6.4.1 Installing the FreeBSD OS on Storage Managed by a MegaRAID Controller	34
6.4.2 Creating a Custom ISO Image to Exclude the mfi (4)	36
6.5 Installing the Kernel Driver on a FreeBSD OS that Boots from a Device Not Managed by a MegaRAID Controller (Secondary Storage)	37

6.5.1 Installing the FreeBSD OS on a System that Does Not Include an Avago Controller before the OS Installation	37
6.5.2 Installing the FreeBSD OS on a System that Includes an Avago Controller before the OS Installation	38
6.6 Updating Drivers in the FreeBSD System	38
6.6.1 Updating the Kernel with the New Driver Source	38
6.6.2 Compiling and Loading the Driver as a Module by Using kldload (Dynamically Loadable Module)	40
6.6.3 Updating the MegaRAID Kernel Driver Module in the FreeBSD OS	40
Chapter 7: VMware Driver Installation	42
7.1 Installing Asynchronous Drivers on the VMware ESXi 5.x and 6.x Operating System	42
7.1.1 Using esxcli and the Asynchronous Driver VIB File in an Existing ESXi Installation	42
7.1.2 Using esxcli and an Offline Bundle Async Driver Zip File in an Existing ESXi Installation	43
7.1.3 Installing an Upgrade	43
7.1.4 Installing the VMware Update Manager	43
Chapter 8: Solaris Driver Installation	44
8.1 Contents of the Driver Distribution	44
8.2 Supported Hardware	44
8.3 Supported Operating Systems	44
8.4 Installing the Driver Package during OS Installation (Solaris 10 OS, x86 Only)	45
8.5 Installing the Driver Package during Operating System Installation (Solaris 11 OS, x86 Only)	45
8.6 Installing the Driver Package during Operating System Installation (Solaris 11.1 OS, x86 Only)	46
8.7 Installing or Upgrading the Driver Package after Operating System Installation	58
8.8 Removing the Driver Package	59
8.8.1 Removing an Existing Driver Package	59
8.8.2 Removing an Inbox Driver/Package on the Solaris 10 OS	60
8.8.3 Removing an Inbox Driver/Package on the Solaris 11 Operating System	60
8.8.4 Removing an Inbox Driver/Package on the Solaris 11 Operating System (Bootable Avago Controller)	61
8.9 Notes	61
Chapter 9: XenServer Driver Installation	63
9.1 Creating a Driver Update Disk with a USB Drive	63
9.2 Installing the XenServer 6.x Operating System on Storage Managed by a MegaRAID Controller (Primary Storage)	63
9.3 Installing or Updating the XenServer 6.2 or 6.5 Operating System Driver	65
Chapter 10: Debian Driver Installation	66
10.1 Installing the Driver in a Debian 7.x Operating System	66
Chapter 11: Oracle Enterprise Linux Driver Installation	67
Chapter 12: Fedora Driver Installation	68
Chapter 13: CentOS Driver Installation	69
Chapter 14: OVM Driver Installation	70
Appendix A: 240 VD Driver Support and Known Limitations	71
A.1 Operating System Driver Support	71
A.2 Known Driver Limitations	71
Revision History	72

Chapter 1: Overview

This chapter provides an overview of the operating system (OS) drivers for the MegaRAID® SAS RAID controllers.

Subsequent chapters provide installation instructions for the OSs. Use the latest updates provided by the OS manufacturer, and review the `readme` file that accompanies the driver for any updated information. You can download the latest drivers for the various OSs from the Avago Technologies website at www.avagotech.com/support/download-search.

NOTE

The MegaRAID RAID controllers do not all support the same OSs. Refer to the documentation for your MegaRAID controller for information about the OSs that the controller supports. You can search archived versions of this guide on the company website for information about OSs that are supported for earlier controllers.

1.1 Driver Description

You can install the MegaRAID SAS Controller in any IBM® AT-compatible computer that has a PCI Express® (PCIe®) local bus. The RAID controller can run under various OSs.

To use the controller with these OSs, you must install software drivers. Avago provides software drivers for the following OSs:

- Microsoft® Windows®
- Red Hat® Linux®
- SUSE® Linux Enterprise Server (SLES®)
- Ubuntu® Linux
- FreeBSD®
- VMware®
- Solaris®
- XenServer®
- Debian®
- CentOS®
- Oracle® Enterprise Linux (OEL)
- Fedora®
- Oracle Virtual Machine (OVM)

1.1.1 Driver Functions

MegaRAID provides drivers for the MegaRAID controllers, which bring up to 12 Gb/s Serial Attached SCSI performance and 6.0 Gb/s SATA III performance to host adapter, workstation, and server designs. The controllers support internal and external storage devices, which let you use a system that supports enterprise-class SAS and desktop-class SATA III drives.

The SAS controllers integrate eight high-performance SAS/SATA III PHYs and a PCI Express bus master DMA core. Each of the eight PHYs is capable of up to 12Gb/s SAS link rates, and 6.0 Gb/s SATA III link rates.

The SAS RAID controllers support the SAS protocol as described in the *Serial Attached SCSI Standard, version 3.0*, and the Serial ATA III (SATA III) protocol defined by the *Serial ATA specification, version 3.0*. SATA III is an extension to SATA 2.0.

The drivers perform these functions:

- The PCI Express protocol
- Multiple RAID storage adapters (RSAs)
- The ability to see newly configured logical drives in the configuration software utility without rebooting the system
- The random deletion of logical drives that were created by using MegaRAID Storage Manager™ software (refer to the *MegaRAID SAS Software User Guide* for more information)
- The use of the remaining array capacity by MegaRAID Storage Manager software

1.1.2 Driver Updates

Because Avago regularly updates device drivers, a feature might be added to your driver that is not included in the most recent documentation. If you have a question about a feature, consult the `readme` file that accompanies the driver, or contact your MegaRAID support representative. Be sure to use the latest service packs provided by the OS manufacturer.

You can download the latest drivers and software on the company website at www.avagotech.com/support/download-search. Under the **Download** tab, select your product from the pull-down list to display the latest drivers available for download.

1.2 Driver Names

The following table lists the device driver files, driver RPM and driver ISO® support, and driver deb package for the MegaRAID controllers.

These files are available on the *Universal Driver Suite* CD that accompanied your MegaRAID controller. Avago updates the MegaRAID device drivers frequently. To make sure that you have the current version of these driver files, download the latest files from the company website at www.avagotech.com/support/download-search. Refer to the `readme` file that accompanies the driver for any updated information.

To make a driver diskette, extract the files from the *Universal Driver Suite* CD to a blank diskette, or download the driver files from the company website and extract them to an empty diskette. Label the diskette as the MegaRAID driver diskette for the given OS.

Table 1 MegaRAID Device Driver Files, Driver RPMs Support, Driver ISO Support, and Driver Deb Package Support

Operating System and Chapter	MegaRAID 6Gb/s Controller Support	MegaRAID 12Gb/s Controller Support	Binary/Source RPM Support	Device Driver File Names	Driver RPMs and Driver ISO Support
Chapter 2					
Windows 7 Client SP1	Yes	Yes		megasas.catmegasas.sysNODEV.INFOEMSETUP.INFTXTSETUP.OEM	N/A
Windows 8, 8.1, 8.1 Update 1	Yes	Yes			
Windows 2008 R2 SP1	Yes	Yes			
Windows Server® 2012	Yes	Yes			
Windows Server 2012 R2	Yes	Yes			
Windows Server 2012 R2 Update 1	Yes	Yes			
Chapter 3					

Table 1 MegaRAID Device Driver Files, Driver RPMs Support, Driver ISO Support, and Driver Deb Package Support

Operating System and Chapter	MegaRAID 6Gb/s Controller Support	MegaRAID 12Gb/s Controller Support	Binary/Source RPM Support	Device Driver File Names	Driver RPMs and Driver ISO Support
<ul style="list-style-type: none"> ■ Red Hat Enterprise Linux 6.x – 6.4, 6.5, 6.6, and 6.7 ■ Red Hat Enterprise Linux 7.x – 7 and 7.1 	Yes	Yes		N/A	KMOD RPMs and ISO support
Chapter 4					
<ul style="list-style-type: none"> ■ SUSE Linux Enterprise Server 11.x – 11 SP1, 11 SP2, 11 SP3, and 11 SP4. ■ SUSE Linux Enterprise Server 12. 	Yes	Yes		N/A	KMP RPMs and ISO support
Chapter 5					
Ubuntu 14.04., 14.10, and 15.04.	Yes	Yes	Ubuntu 15.04 is supported through source RPM only.	Package .deb	Deb package support
Chapter 6					
FreeBSD 9.2, 9.3, 10.0, and 10.1	Yes	Yes		mrsas.ko <ul style="list-style-type: none"> ■ 3Gb/s RAID controllers: mfi.ko ■ 6Gb/s RAID controllers: mfi.ko or mrsas.ko, depending on the controller ■ 12Gb/s RAID controllers: mrsas.ko 	N/A
Chapter 7					
<ul style="list-style-type: none"> ■ VMware ESXi 5.0.x – 5.0 Update 1, 5.0 Update 2, and 5.0 Update 3 ■ VMware ESXi 5.1.x – 5.1, 5.1 Update 1, 5.1 Update 2, and 5.1 Update 3 ■ VMware ESXi 5.5.x – 5.5, 5.5 Update 1, and 5.5. Update 2. ■ VMware ESXi 6.0 	Yes	Yes		<ul style="list-style-type: none"> ■ ESX/ESXi 4.x: VMware installation bundle (VIB) file package <offline_bundle>.zip file package ■ ESXi 5.x: VMware installation bundle (VIB) file package megaraid_sas.zip file package 	N/A
Chapter 8					

Table 1 MegaRAID Device Driver Files, Driver RPMs Support, Driver ISO Support, and Driver Deb Package Support

Operating System and Chapter	MegaRAID 6Gb/s Controller Support	MegaRAID 12Gb/s Controller Support	Binary/Source RPM Support	Device Driver File Names	Driver RPMs and Driver ISO Support
<ul style="list-style-type: none"> ■ Solaris 10.x – Solaris 10 Update 9 and Solaris 10 Update 10 ■ Solaris 11.x – Solaris 11 and Solaris 11 Update 1 	Yes	Yes		<ul style="list-style-type: none"> ■ For Gen1 82XX, 83XX, and 84XX SAS RAID controllers: mega_sas (32-bit), mega_sas (64-bit), mega_sas.conf ■ For Gen2 87XX, 88XX, 92XX, 96XX, and 98XX SAS RAID controllers: mr_sas (32-bit), mr_sas (64-bit), mr_sas.conf ■ For Gen2 MegaRAID Entry controllers: mrentry_sas (32-bit), mrentry_sas (64-bit), mrentry_sas.conf 	N/A
Chapter 9					
XenServer 5.6 SP1, 6.2, 6.5, and 6.5 SP1.	Yes	Yes		N/A	RPMs and ISO support
Chapter 10					
Debian 6, 7, and 7.6.	Yes	Yes		N/A	N/A
Chapter 11					
OEL 6.x based UEK Support:	Yes			N/A	KMOD RPMs and ISO support
<ul style="list-style-type: none"> ■ Update 5UEK (3.8.13-16.2.1) (el6uek). ■ Update 6UEK (3.8.13-44.1.1) (el6uek). ■ UEK3 U1 (3.8.13-26.1.1) (el6uek). ■ UEK3 U2 (3.8.13-35) (el6uek). ■ UEK3 U3 (3.8.13-44) (el6uek). ■ UEK3 U4 (3.8.13-55) (el6uek). ■ UEK3 U5 (3.8.13-68) (el6uek). 					
OEL7.x based UEK Support:					
<ul style="list-style-type: none"> ■ Gold UEK (3.8.13-35.2.1) (el7uek). ■ UEK3 U3 (3.8.13-44) (el7uek). ■ UEK3 U4 (3.8.13-55) (el7uek). ■ Update 1UEK (3.8.13-55.1.6) (el7uek). ■ UEK3 U5 (3.8.13-68) (el7uek). 					
NOTE ISO (DUD) is not supported for all UEK kernels and is limited only to OEL 6.x and 7.x Red Hat kernel releases.					
Chapter 12					
Fedora 19, 20, and 22	Yes	Yes		N/A	KMOD RPMs support
Chapter 13					
CentOS 6.5, 6.6, CentOS 7.0, and CentOS 7.1.	Yes	Yes		N/A	N/A
Chapter 14					
Oracle VM 3.2.1, 3.3.1	Yes	Yes		N/A	N/A

Chapter 2: Windows Driver Installation

This chapter describes the installation of the following Microsoft Windows OSs:

- Windows 7 Client SP1
- Windows 8, 8.1, 8.1 Update 1
- Windows 2008 R2 SP1
- Windows Server 2012
- Windows Server 2012 R2
- Win Server 2012 R2 Update 1

2.1 MegaRAID Primary Storage

In the MegaRAID primary storage configuration, the Windows OS is installed on virtual drives provided by the MegaRAID controller. The MegaRAID controllers (6Gb/s and 12Gb/s) include pre-boot configuration utilities (WebBIOS™ and Ctrl-R) that create the virtual drive before the installation of the Windows OS starts.

To install the Windows OS, prepare a USB flash drive, CD-ROM or diskette, as appropriate, with the MegaRAID driver.

The driver is distributed in a series of nested compressed files. Use an existing Windows device to extract the files for the driver-loading device (USB, CD-ROM, or diskette) by using the appropriate Windows driver. Only two driver choices exist across the supported Windows versions: one for 32-bit systems or one for 64-bit systems.

2.1.1 Storage Configuration

The procedures in this section describe how to create the virtual drive used for the Windows OS. You can add other virtual drives to the running OS after the Windows OS has been installed. The MegaRAID preboot BIOS utilities, such as WebBIOS (for 6Gb/s controllers) and Ctrl-R (for 12Gb/s controllers) that create the virtual disk for the Windows OS are accessible during the power-on self-test (POST) part of the bootup process.

Refer to the *MegaRAID SAS Software User Guide* or the *12Gb/s MegaRAID® SAS Software User Guide* for more information about the WebBIOS configuration utility and the Ctrl-R Utility, respectively.

2.1.1.1 Creating Storage Configuration Using WebBIOS

The following procedure describes the creation of a RAID 1 array. You can use other RAID levels, and the steps are the same except when selecting the RAID level. In a RAID 1 array, the RAID controller duplicates all data from one drive to a second drive. The RAID 1 array provides complete data redundancy, but at the cost of doubling the required data storage capacity. It is appropriate for small databases or any other environment that requires fault tolerance but small capacity.

1. When the host computer is booting, hold down the Ctrl key and press the H key when the following text appears on the window:

```
Copyright© Avago Technologies
```

```
Press <Ctrl><H> for WebBIOS
```

The **Controller Selection** window appears.

2. If the system contains multiple SAS/SATA controllers, select a controller.
3. Click **Start**.

The main **WebBIOS CU** window appears.

-
4. Click **Configuration Wizard**.
The first **Configuration Wizard** window appears.
 5. Click **New Configuration**.

NOTE If you choose the first or second option, all of the existing data in the configuration will be deleted. Make a backup copy of any data that you want to keep before you choose an option.

6. Click **Next**.
A dialog warns that you will lose data if you click **Clear Configuration** or **New Configuration**. The **WebBIOS Configuration Method** window appears.
7. Select **Manual Configuration**.
Manual configuration lets you control all attributes of the new storage configuration as you create drive groups and virtual drives, and set their parameters.
8. Click **Next**.
The **Disk Group Definition** window appears. You use this window to select drives to create drive groups.
9. Hold down the Ctrl key while you select two ready drives in the **Drives** panel on the left.
You must select an even number of drives.
10. Click **Add To Array** to move the drives to a proposed drive group configuration in the **Disk Groups** panel.
If you need to undo the changes, click **Reclaim**.
11. Choose whether to use power save mode.
12. Choose whether to use drive encryption.

NOTE A RAID 1 virtual drive can contain up to 16 drive groups and up to 32 drives in a single span. (Other factors, such as the type of controller, can limit the number of drives.) You must use two drives in each RAID 1 drive group in the span.

13. After you finish selecting drives for the drive group, click **Accept DG**.
14. Click **Next**.
The **Virtual Drive Definition** window appears. You use this window to select the RAID level, strip size, read policy, and other attributes for the new virtual drives.
15. Change the virtual drive options from the defaults listed on the window as needed.
Here are brief explanations of the virtual drive options:
 - **RAID Level:** The drop-down menu lists the possible RAID levels for the virtual drive. Select **RAID 1**.
 - **Strip Size:** The strip size specifies the length of the data segments that the RAID controller writes across multiple drives, not including parity drives. For example, consider a stripe that contains 64 KB of drive space and has 16 KB of data residing on each drive in the stripe. In this case, the stripe size is 64 KB and the strip size is 16 KB. You can set the strip size to 8, 16, 32, 64, 128, 256, 512, and 1024 KB. A larger strip size produces higher

read performance. If your computer regularly performs random read requests, choose a smaller strip size. The default is 64 KB.

- **Access Policy:** Select the type of data access that is allowed for this virtual drive.

RW: Permit read/write access. This setting is the default.

Read Only: Permit read-only access.

Blocked: Do not permit access.

- **Read Policy:** Specify the read policy for this virtual drive.

Normal: Disable the read-ahead capability. This setting is the default.

Ahead: Enable read-ahead capability, which permits the controller to read sequentially ahead of requested data and to store the additional data in cache memory, anticipating that the data will be needed soon. This setting speeds up read operations for sequential data, but little improvement exists when accessing random data.

- **Write Policy:** Specify the write policy for this virtual drive.

WBack: In Write Back mode, the controller sends a data transfer completion signal to the host when the controller cache has received all of the data in a transaction. This setting is recommended in Standard mode.

WThru: In Write Through mode, the controller sends a data transfer completion signal to the host when the drive subsystem has received all of the data in a transaction. This setting is the default.

Write Back with BBU: Select this mode if you want the controller to use Write Back mode, but the controller either has no battery backup unit (BBU) or the BBU is bad. If you do not choose this option, the controller firmware automatically switches to Write Through mode if it detects a bad or missing BBU.

NOTE

You can use Write Back mode with or without a battery. You should use either a battery to protect the controller cache or an uninterruptible power supply (UPS) to protect the entire system. If you do not use a battery or a UPS, and a power failure occurs, you risk losing the data in the controller cache. Although you can enable or disable the disk cache, you should disable it. If you enable the disk cache, the drive sends a data transfer completion signal to the controller when the drive cache has received all the data in a transaction. However, the data has not been actually transferred to the

disk media, so you risk losing the data in the disk cache if a power failure occurs. The data is unrecoverable.

- **IO Policy:** The IO policy applies to read operations on a specific virtual drive. It does not affect the read-ahead cache.
 - Direct:** Read operations are not buffered in cache memory. Data is transferred to the cache and the host concurrently. If the same data block is read again, it comes from cache memory. This setting is the default.
 - Cached:** Read operations are buffered in cache memory before they are sent to the host.
 - **Drive Policy:** Specify the drive cache policy.
 - Enable:** Enable the drive cache.
 - Disable:** Disable the drive cache.
 - NoChange:** Leave the current drive cache policy as is. This setting is the default.
 - **Disable BGI:** Specify the background initialization status.
 - No:** Leave background initialization enabled. A new configuration can be initialized in the background while you use WebBIOS to perform other configuration tasks. This setting is the default.
 - Yes:** Select **Yes** if you do not want to allow background initialization for configurations on this controller.
 - **Select Size:** Specify the size of the virtual drive or drives in MB, GB, or TB. Usually, this size is the full size for the RAID 1 array shown in the Configuration panel on the right. You can specify a smaller size if you want to create other virtual drives on the same drive group.
 - **Update Size:** Click **Update Size** to update the Select Size Field value for the selected RAID levels.
16. Either click **Accept** to accept the changes to the virtual drive definition, or click **Reclaim** to return to the previous settings.
 17. Click **Next** after you define the virtual drives.
The **Configuration Preview** window appears.
 18. Check the information in the configuration preview.
 19. If the virtual drive configuration is acceptable, click **Accept** to save the configuration. Otherwise, click **Back** to return to the previous screens and change the configuration.
 20. If you accept the configuration, click **Yes** at the prompt to save the configuration and initialize the new virtual drive.
 21. After the initialization is complete (the elapsed time depends on the RAID level and the disk size), click the **Home** button, and then click **Exit** in the left hand window frame.
 22. Select **Exit Application**, and reboot the computer with the Windows OS in the DVD drive or the CD drive.

2.1.1.2 Creating Storage Configuration Using Ctrl-R

Perform the following steps to create a virtual drive.

1. When the host computer is booting, hold down the Ctrl key and press the R key when the following text appears on the window:

```
Copyright© Avago Technologies  
Press <Ctrl><R> for Ctrl-R
```

The **Controller Selection** window appears.
2. In the **VD Mgmt** screen, navigate to the controller and press the F2 key.
3. Press Enter.
The **Create New VD** screen appears.
4. Select a RAID 1 level for the drive group from the **RAID Level** field.

5. Select a power save mode for the drive group from the **Power save mode** field.
The options available are **Auto**, **Max**, and **Controller defined**.
This field is enabled only if power saving on configured drives is supported on the controller.
6. Enter a name for the virtual drive in the **Name** field.
The name given to the virtual drive cannot exceed 15 characters.
7. Press **OK**.
A dialog appears, asking you whether you want to initialize the virtual drive you just created.
8. To initialize the virtual drive, press **OK**.
The **Create New VD** dialog appears again.
9. Press **Advanced**.
The **Create Virtual Drive – Advanced** dialog appears. The following are the additional virtual drive properties that you can select while you create virtual drive. Change these parameters only if you have a specific reason for doing so. It is usually best to keep them at their default settings.
 - **Strip Size** – The strip size is the portion of the stripe that resides on a single virtual drive in the drive group. Strip sizes of 64 KB, 128 KB, 256 KB, 512 KB, or 1 MB are supported.
 - **Read Policy** – Specify one of the following options to specify the read policy for this virtual drive:
 - **Normal** – Read ahead capability lets the controller read sequentially ahead of requested data and to store the additional data in cache memory, thereby anticipating that the data will be needed soon. This process speeds up reads for sequential data, but there is little improvement when the computer accesses random data.
 - **Ahead** – Disables the read ahead capability.
 - **Write Policy** – Select one of the following options to specify the write policy for this virtual drive:
 - **Write Back** – In this mode, the controller sends a data transfer completion signal to the host when the controller cache receives all of the data in a transaction. If you select the Write Back policy and the battery is absent, the firmware disables the Write Back policy and defaults to the Write Through policy.
 - **Write Through** – In this mode, the controller sends a data transfer completion signal to the host when the drive subsystem receives all the data in a transaction.
 - **Always Write Back** – In this mode, the controller sends a data transfer completion signal to the host when the controller cache receives all the data in a transaction. If you select the Always Write Back policy and the battery is absent, the firmware is forced to use the Write Back policy.
 - **I/O Policy** – The I/O policy applies to reads on a specific virtual drive. It does not affect the read ahead cache.
 - **Cached** – In this mode, all reads are buffered in cache memory. **Cached I/O** provides faster processing.
 - **Direct** – In this mode, reads are not buffered in cache memory. Data is transferred to the cache and the host concurrently. If the same data block is read again, it comes from cache memory. **Direct I/O** makes sure that the cache and the host contain the same data.
 - **Disk cache policy** – Select a cache setting for this virtual drive:
 - **Enable** – Enable the drive cache.
 - **Disable** – Disable the drive cache.
 - **Unchanged** – Updating the drive cache policy to **Unchanged** may enable /disable the drive cache based on the WCE (Write Cache Policy) bit of the save mode page of the drive.
 - **Emulation** – Lets you to set the emulation type on a virtual drive to default or none. The force option forces the emulation to be set on a controller even when MFC settings do not support it. The possible options are **Default**, **Disabled**, or **Forced**.
 - **Initialize** – Select to initialize the virtual drive. Initialization prepares the storage medium for use. Fast initialization will be performed on the virtual drive.
 - **Configure Hot Spare** – Select to configure physical drives as hot spares for the newly created virtual drive.
This option is enabled only if there are additional drives and if they are eligible to be configured as hot spares. This option is not applicable for RAID 0. If you select this option after the Virtual drive is created, a dialog appears. The dialog asks you to choose the physical drives that you want to configure as hot spares.

- **Provide shared access**– Select this option if you want the virtual drive to be shared between the servers in a cluster. This option appears only if the controller supports High Availability DAS.
10. Select **Initialize**, and press **OK**.
The new virtual drive is created and initialized.
 11. After the initialization is complete (the elapsed time depends on the RAID level and the disk size), press Esc twice (once to exit the dialog, and the second time to exit the utility).
A confirmation message box appears.
 12. Press **OK** to exit the utility, and reboot the computer with the Windows OS in the DVD drive or the CD drive.

2.2 Primary OS Storage on the MegaRAID Controller

For the Windows 2008 OS, the MegaRAID driver is added after other installation steps.

Perform the following steps to set up the primary operating system storage on your MegaRAID controller:

1. The operating system loads and decompresses the core files from the boot DVD first.
2. After the **Install Windows Language selection** window, the **Install Now** window appears, followed by the OS selection, license agreement and installation type.
On new installations, the Custom installation type is the only option.
3. On the next Windows installation window, a Load Driver link introduces the MegaRAID driver.
For the Windows 2008 OS, you can add the driver from the CD, DVD, or USB flash drive.
4. Click **Browse**, and select the device and the folder with the previously extracted drivers.
5. In the next Windows installation window, select the driver to be installed, and click **Next**.
If no driver appears, two common problems might have occurred.
 - The folder with the files was not selected.
 - The wrong driver (32-bit as compared to 64-bit) was selected.
6. After the driver is loaded, follow the rest of the standard Windows installation steps.

2.3 Drivers and Operating Systems

When installing the MegaRAID Drivers on Windows platform, refer to the table below for locating the driver and its respective operating system.

Table 2 Drivers and Operating Systems

Driver	Windows Operating System	Architecture
srv_2003_x86	Windows Server 2003	x86
srv_2003_x64	Windows Server 2003	x64
srv_2008_x86	Windows Server 2008	x86
srv_2008_x64	Windows Server 2008	x64
Vista_x86	Windows Vista®	x86
Vista_x64	Windows Vista	x64
Win7_x86	Windows 7 Windows Server 2008 R2	x86
Win7_x64	Windows 7 Windows Server 2008 R2	x64

Table 2 Drivers and Operating Systems (Continued)

Driver	Windows Operating System	Architecture
Win8_X86	Windows 8 Windows Server 2012	x86
Win8_X64	Windows 8 Windows Server 2012	x64
Win8.1_x86	Windows Blue Windows Server 2012 R2	x86
Win8.1_x64	Windows Blue Windows Server 2012 R2	x64
xp_64	Windows XP	x64
NOTE Windows XP on x86 is not supported as Windows XP on x86 does not support Storport Driver, which is required for MegaRAID Drivers.		

2.4 Secondary Storage on the MegaRAID Controller with the Windows 2008 OS

As the MegaRAID controller is installed and the previously installed Windows OS starts, the Windows 2008 OS prompts with Found New Hardware.

Perform the following steps to set up secondary storage for the Windows 2008 OS:

1. Select **Locate and Install**.
2. Select **Don't Search Online**.
3. Select **Show Me Other Options**
4. Select **Browse My Computer**.
5. Click **Browse**.
6. In the **Browse for Folder** window, locate the previously extracted driver files from the local boot disk, CD, DVD, network, or USB device.
7. Click **OK**.
8. Click **Next**.
9. Click **Install**.
The Hardware Wizard displays the following message: `The software for this device has been successfully installed.`
10. Reboot the system.
The system does not require a reboot when the MegaRAID controller driver is loaded for the first time.

2.5 Using the Device Manager to Install MegaRAID on the Windows 2008 OS

If you do not install the MegaRAID driver at boot time, the MegaRAID driver is added or updated in the Windows environment using the Device Manager. Many methods exist to start the Device Manager, including one general method for all supported versions of the Windows OS.

Perform the following steps to add or update the MegaRAID driver in the Windows environment using the Device Manager:

1. Select **Start > Search > devmgmt.msc > enter key** (for all versions except the Windows 2003 OS).
In the Device Manager, a MegaRAID controller with no driver appears under the heading Other devices as a RAID Controller or Unknown Device, depending on the system history.
2. Right-click and select either **RAID Controller** or **Unknown Device**, as appropriate.

3. If the device does not appear, double-click **Storage controllers** to expose any detected controllers that are supported by an existing driver.
4. If you locate the MegaRAID controller, right-click on the controller.
The driver installation steps for the Windows 2008 OS are the same no matter where the device was found.
5. Click **Update Driver Software**.
6. Click **Browse My Computer** to search for driver software.
7. Click the **Browse** button.
8. In the **Browse for Folder** window, locate the previously extracted driver files from the local boot disk, CD, DVD, network, or USB device.
9. Click **OK**.
10. Click **Next**.
11. Click **Install**.
The Update Driver Software wizard shows the message: `The software for this device has been successfully installed.`
12. Reboot the system.

2.6 Installing a MegaRAID Driver on the Microsoft Windows 8 OS

Microsoft Windows Server 8 includes a MegaRAID driver in box. The driver version 5.2.122.0, dated April 3, 2012.

Consider the following points before you install the driver.

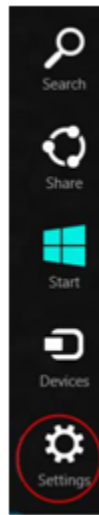
- If you want to use the MegaRAID controller for primary storage, see [Section 2.1.1.1, Creating Storage Configuration Using WebBIOS](#), on configuring a virtual disk for the OS in a pre-boot environment. The Windows installation program recognizes the MegaRAID controller, and it automatically installs a driver.
- If you want to use the MegaRAID controller as secondary storage, install the OS with the MegaRAID controller installed. The OS automatically configures the controller with the in-box driver.
- When the Microsoft OS is running on the machine with the MegaRAID controller, upgrade to the latest Avago® MegaRAID driver.

2.6.1 Driver Upgrades

Perform the following steps to upgrade the Windows 8 driver.

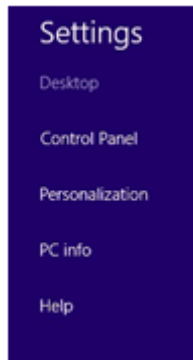
1. Download the updated driver and put it on a USB, CD or DVD disc.
2. Boot the Microsoft Windows 8 OS, and then move the mouse to the upper- or lower-right corner of the screen to expose the desk icons for **Search**, **Share**, **Start**, **Devices**, and **Settings**, shown in the following figure.

Figure 1 Settings Option



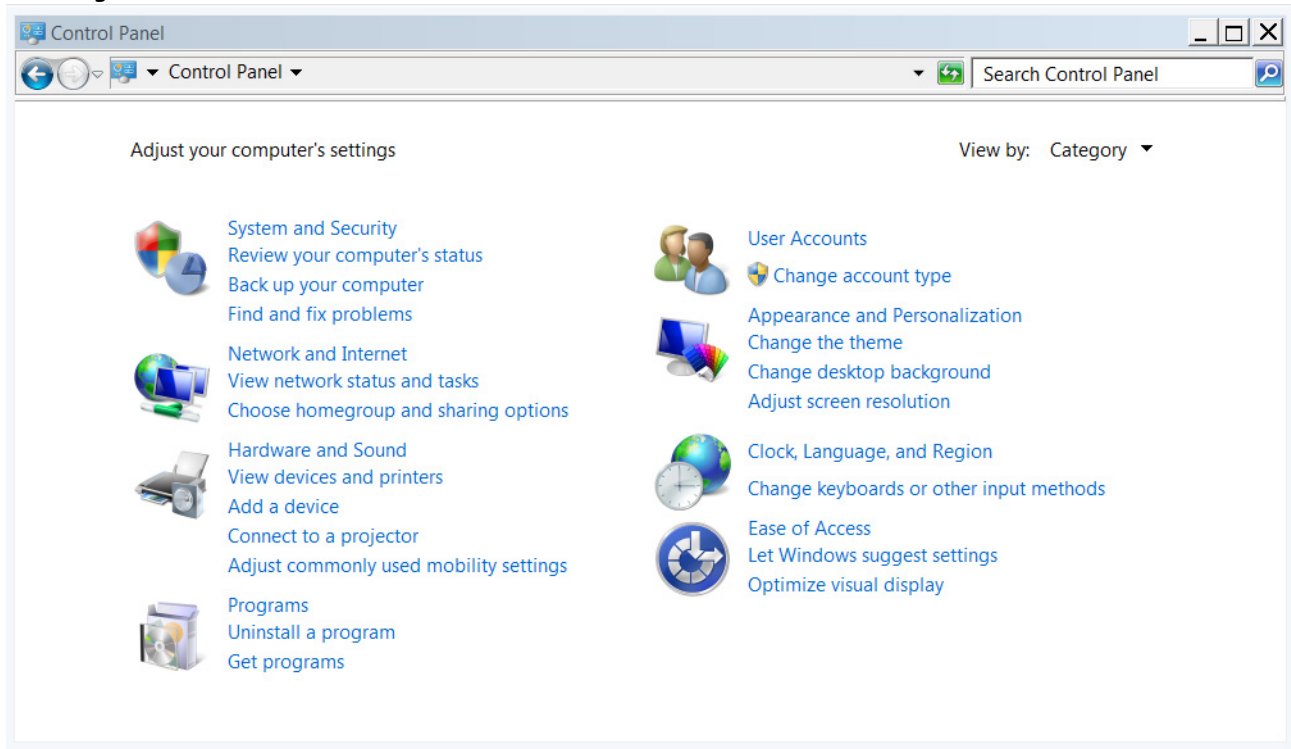
3. Click **Settings**.
4. On the Settings bar, click **Control Panel**, as shown in the following figure.

Figure 2 Settings Bar



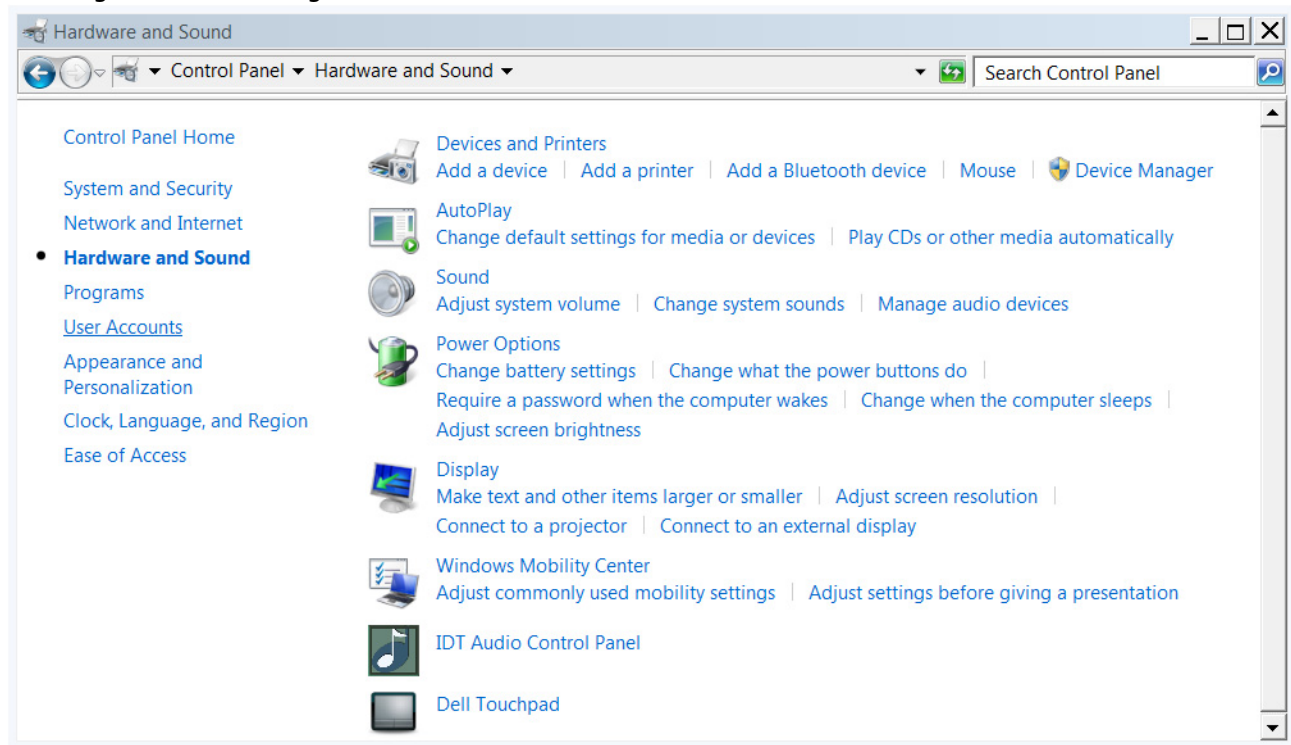
5. In the Control Panel, click **Hardware and Sound**.
The following figure appears.

Figure 3 Hardware and Sound



6. In the Hardware and Sound screen, click **Device Manager** under the Devices and Printers heading. The following figure appears.

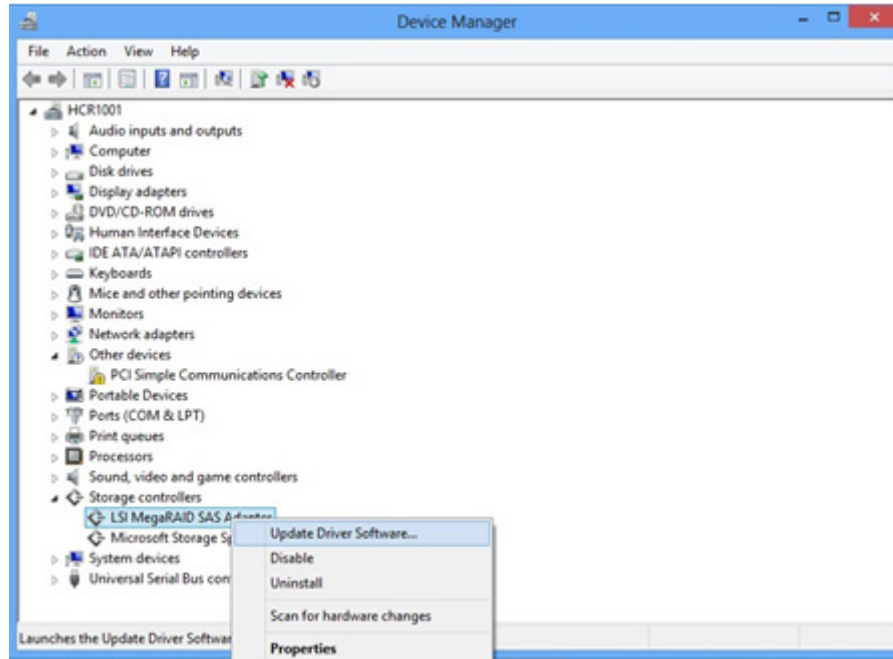
Figure 4 Device Manager



7. In the Device Manager, expand the sub-menu under Storage Controllers and right-click **Update Driver Software**, as shown in the following figure.

You can find the version of the existing driver by right-clicking **Properties** and selecting the **Driver** tab.

Figure 5 Update Driver Software Option



8. In the Update Driver Software wizard, select **Browse My Computer** to locate the updated driver on the USB, CD, or DVD.
9. When the driver is found, click **Install** to confirm, as shown on the following screen.

Figure 6 Install Button



10. The installation wizard presents progress screens and announces the completion of the installation.
11. After the driver is installed, reboot the system.

2.7 Installing a MegaRAID Driver on the Windows Server 2012 Operating System

The Microsoft Windows Server 2012 operating system package includes a MegaRAID driver in box.

The type of installation to use depends on how you plan to use your MegaRAID controller:

- If you use the MegaRAID controller as primary storage, see [Section 2.1.1.1, Creating Storage Configuration Using WebBIOS](#), on configuring a virtual disk for the OS in a pre-boot environment. The Windows installation program recognizes the MegaRAID controller, and it automatically installs a driver.
- If you use the MegaRAID controller as secondary storage, Avago recommends that you install the OS without the MegaRAID controller, shut down the system, install the controller, and let the OS automatically configure the controller with the in-box driver.
- After the Windows Server 2012 OS is running on the machine with the MegaRAID controller, an upgrade to the latest Avago MegaRAID driver is recommended. The following section describes how to upgrade the driver.

2.7.1 Upgrading the Driver for the Windows Server 2012 Operating System

Perform the following steps to upgrade the driver.

1. Download the updated driver from www.avagotech.com/support/download-search, and put it on a USB, CD, or DVD.
2. Boot the Microsoft Server 2012 OS.
3. Click the **Server Manager** button to start Server Manager, if it does not start automatically.
The button to start Server Manager is the first item on the left of the start bar, as shown in the following figure.

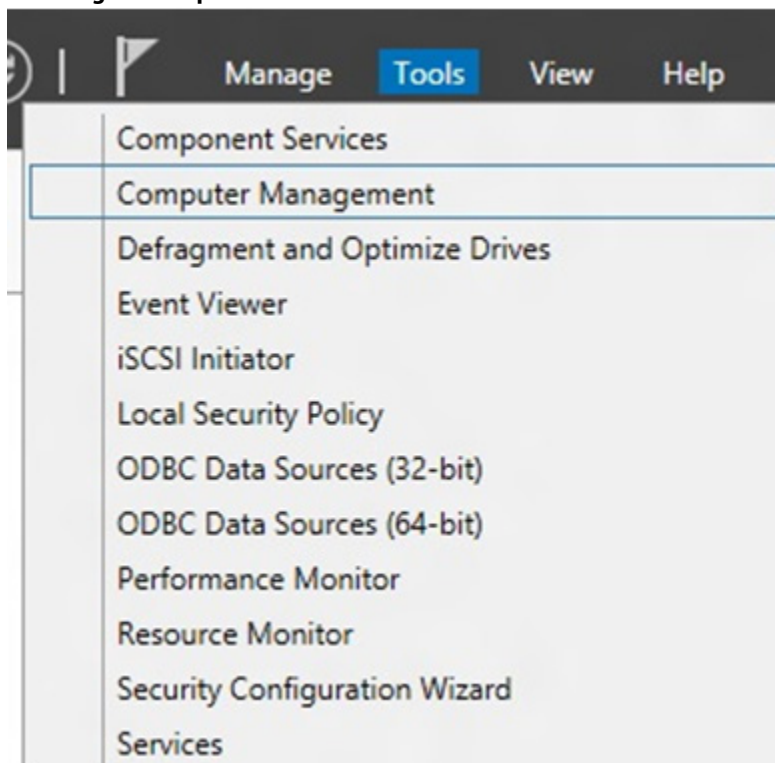
Figure 7 Server Manager Button



The **Server Manager** page appears.

4. In Server Manager, open the Tools menu, and select **Computer Management**, as shown in the following figure.

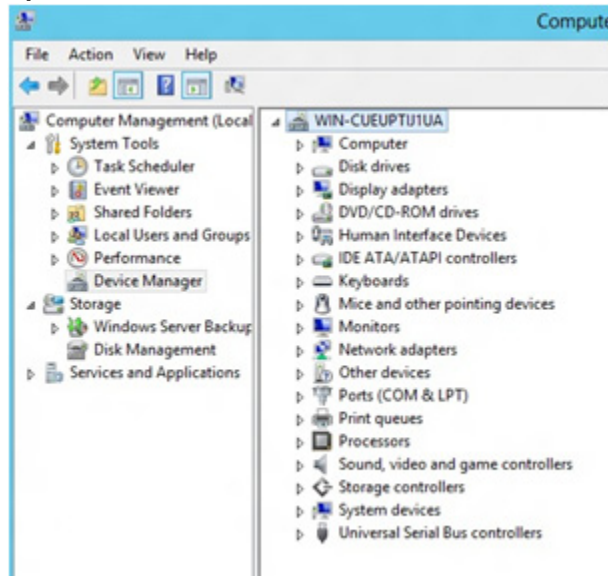
Figure 8 Computer Management Option



The **Computer Management** window appears.

5. In the left frame of the **Computer Management** window, select **Device Manager**.

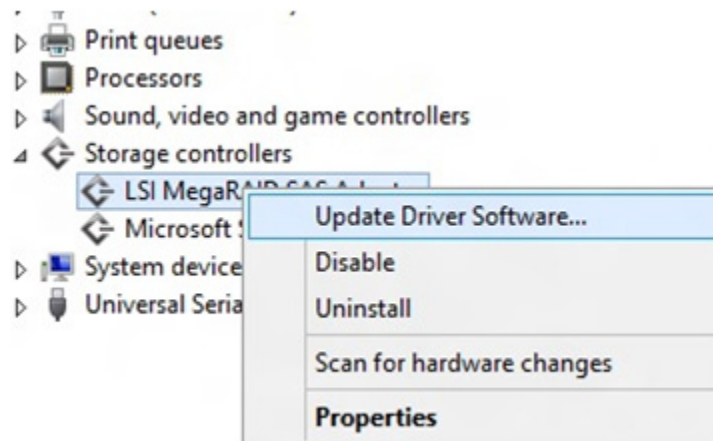
Figure 9 Device Manager Option



The **Device Manager** window appears.

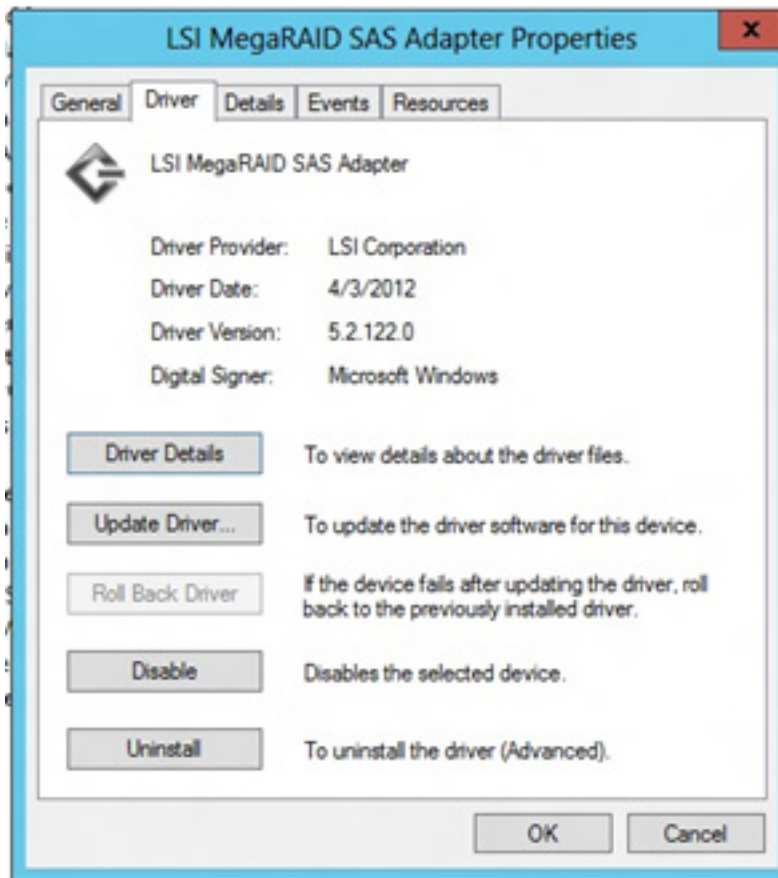
6. In the **Device Manager** window, expand the submenu under **Storage Controllers**.
7. Right-click the **Avago MegaRAID Controller** option, and click **Update Driver Software**, as shown in the following figure.

Figure 10 Update Driver Software Option



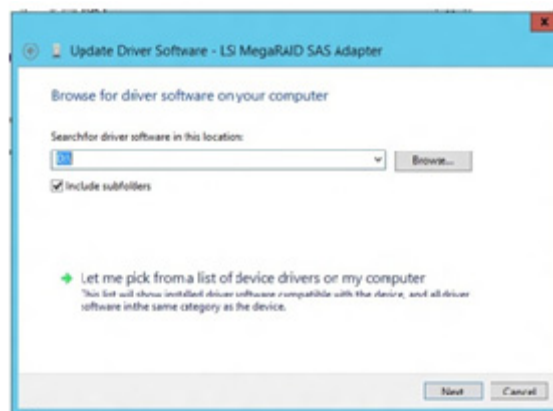
To find the version of the existing driver, right-click the **Avago MegaRAID Controller** option. Click **Properties**, and select the **Drivers** tab as shown in the following figure.

Figure 11 Driver Version



8. In the Update Driver Software wizard, click the **Browse** button to locate the updated driver on the USB, CD, or DVD.

Figure 12 Update Driver Software Wizard



After you locate the updated driver, the **Windows Security** dialog appears.

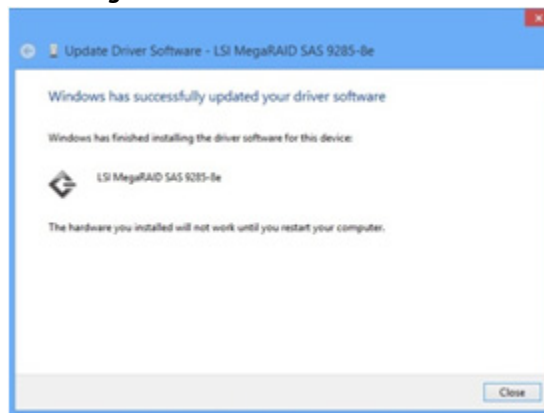
9. Click the **Install** button in the **Windows Security** dialog, as shown in the following figure.

Figure 13 Windows Security Dialog



The installation wizard presents progress screens and announces the completion of the installation.

Figure 14 Installation Complete Dialog



10. Reboot the system after the driver is installed.

Chapter 3: Red Hat Linux Driver Installation

This chapter describes how to install the device driver in new Red Hat Enterprise Linux systems, update the driver on existing operating systems, and uninstall the driver.

Refer to the release notes that accompanied the driver for information on an existing Red Hat Enterprise Linux system.

NOTE An optimized, single unified binary is provided for RHEL, CentOS, and OEL operating systems.

3.1 Installing the Driver in a New Red Hat Enterprise Linux 5.x, 6.x, or 7.x OS

You can install the MegaRAID device driver in a new system from the Red Hat Enterprise Linux CD, DVD, or from a driver update disk.

NOTE MegaRAID supports PPC 64-bit architecture for Red Hat Enterprise Linux 6, but the preboot application is not supported due to the PPC BIOS limitations.

NOTE Do not install the operating system on the PPC virtual drive for the PPC 64-bit architecture.

3.1.1 Installing from a CD or a DVD

Perform the following steps to install the MegaRAID device driver in a new Red Hat Linux OS from the Red Hat Enterprise Linux installation media:

1. Refer to your system documentation, if needed, and boot the server with the installation CD or DVD.
2. Follow the installation procedure for the Red Hat OS.

If you do not provide a driver disk at boot time, the driver is loaded automatically during the installation process.

3.1.2 Creating a Driver Update Disk with a USB Drive

You can transfer a driver disk image to a USB drive with the rawrite tool from DOS®, or the dd utility in Linux. The URL for the rawrite tool is <http://www.tux.org/pub/dos/rawrite>. On a Linux machine, you can use the dd command to burn a driver ISO image on a USB drive.

Perform the following steps to create a driver update disk (DUD) with a USB drive.

1. Insert a USB stick into a Linux machine, making sure that the USB drive is not mounted.
2. Type the following command:

```
"$ dd if=<driver.iso> of=/dev/sdx"
```

Where /dev/sdx is the USB drive.

NOTE Make sure that you pick the correct DUD image from the Avago release bundle. The DUD image should match with the installed OS kernel version.

3. Press Enter.
4. Mount the USB stick to verify its contents.

5. Make sure the DUD image is in iso9660 format or MS-DOS format by typing the following command:

```
$df -T
```

6. Press Enter.

The file system type and other information about the mounted devices appear.

3.1.3 Installing from a Driver Update Diskette

Perform the following steps to create the driver update diskette by using the Linux driver image and to install the MegaRAID device driver in a new Red Hat Enterprise Linux OS:

1. Boot the server with the installation CD or DVD.
Refer to your system documentation, if needed.
2. Enter the following boot option to load the driver disk during installation:

```
linux dd
```

NOTE If you do not get a command prompt to enter the `linux ddboot` option, press Esc. For more information, refer to the Distro-specific installation process.

3. Press Enter to continue the installation.
4. When prompted, insert the driver diskette.
The utility locates and loads the driver for your controller.
5. Press Alt+Ctrl+F4 to verify that the driver is loaded.
6. Press Alt+Ctrl+F1 to return to the installation.
7. Follow the Red Hat installation procedure to complete the installation.

3.2 Installing the Red Hat Enterprise Linux 5.x, 6.x, or 7.x Driver in an Existing Installation

You can install the device driver in an existing Red Hat Enterprise Linux system from the Red Hat Enterprise Linux installation CD.

Perform the following steps to add the Red Hat Enterprise Linux 5, 6, or 7 driver to an existing installation:

1. Turn on the power to the system.
The system initializes the hardware. The system then detects the controller and invokes Kudzu, the Red Hat Enterprise Linux hardware configuration utility.
2. Enter the `-ivh driver.rpm` command.
The following RAID controller is added to your system: LSI MegaSAS
3. Select the **Configure the device** option.
4. Highlight the Configure tab, and press Enter.
The system configures the controller and installs the appropriate driver in the kernel.
The system boots and displays the devices connected or configured on the controller.

3.3 Installing or Updating the Red Hat Linux System Driver

3.3.1 Installing or Updating the Driver by Using the Generic RPMs

Perform the following steps to install or update to the latest version of the Red Hat Linux system driver by using the generic RPMs:

1. Boot the system.
2. Go to Console (your terminal GUI).
3. Perform the following steps to install the <kmod> RPM. In this example, the driver version is 06.602.03.00.

- a. Uninstall the earlier version, if needed.
- b. Extract the packaging from the Linux system by typing the following command and pressing Enter:

```
# tar -zxvf megaraid_sas_components.gz
```

- c. For RHEL5 (Update 8), architecture = x86_64, type the following commands and press Enter:

```
# cd rhel5_oel5_centos5/rpms-1# rpm -ivh  
kmod-megaraid_sas-06.602.03.00-1-el5.8.x86_64.rpm
```

- d. For RHEL6 (Update 2), architecture = x86_64, type the following commands and press Enter:

```
# cd rhel6_oel6_centos6/rpms-1# rpm -ivh  
kmod-megaraid_sas-06.602.03.00_el6.2-1.x86_64.rpm
```

NOTE You need to select the correct RPM from the available bundled RPMs. Otherwise, you will see an RPM installed but it will be for a different kernel version.

4. Reboot the system to load the driver.

3.3.2 Installing or Updating the Driver by Using the DKMS RPMs

Perform the following steps to install or update to the latest version of the Red Hat Linux system driver by using the DKMS RPMs. In this example, the driver version is 06.602.03.00-1.

NOTE This DKMS packaging is provided only for RHEL5(x86 and x86_64) pre-compiled binaries.

1. Extract the packaging from the Linux system by typing the following commands and pressing Enter:

```
# tar -zxvf megaraid_sas-release.tar.gz  
# cd dkms-1  
# tar -zxvf megaraid_sas-06.602.03.00-1.dkms.tar.gz
```

2. Install the DKMS framework by typing the following commands and pressing Enter:

```
# rpm -ivh dkms-2.0.2.21.1-1.noarch.rpm install DKMS rpm  
# rpm -ivh megaraid_sas-06.602.03.00-1dkms.noarch.rpm
```

3. Reboot to load the driver with the newer version by typing the following command and pressing Enter:

```
# reboot
```

3.4 Uninstalling the Red Hat System Driver

NOTE When you uninstall the existing version of the driver, the driver rolls back to previous version of the driver.

Perform the following steps to uninstall the <kmod> RPM. In this example, the driver version is 06.602.03.00.

1. Type the following command and press Enter:

```
# rpm -qa | grep megaraid_sas
```

2. Find the string that contains the text megaraid_sas, and copy the string.

3. Type the following commands and press Enter:

```
# rpm -e megaraid_sas-06.602.03.00-1-rhel5
```

```
# reboot
```

Chapter 4: SUSE Linux Enterprise Server (SLES) Driver Installation

This chapter describes how to install the device driver in new SUSE Linux Enterprise Server (SLES) operating systems (OSs), update the driver on existing systems, and uninstall the driver.

4.1 Installing the Driver in a New SUSE Linux Enterprise Server System

You can install the MegaRAID device driver in a new system from the SUSE SLES Linux CD or DVD, or from a driver update diskette.

NOTE If you use Service Pack (SP) 1 or SP 2, you need to load the driver. If you use SP 3 RC 2, the MegaSAS driver is already on the SUSE SLES Linux CD.

NOTE MegaRAID supports PPC 64-bit architecture for the SUSE Linux Enterprise Server System, but the preboot application is not supported due to the PPC BIOS limitations.

NOTE Do not install the operating system on the PPC virtual drive for the PPC 64-bit architecture.

4.1.1 Installing from a CD or a DVD

Perform the following steps to install the driver in a new SUSE Linux Enterprise Server system from the SUSE Linux Enterprise Server installation CD or DVD:

1. Boot the server with the SUSE Linux Enterprise Server SP CD or DVD.
The system BIOS must support booting from a CD-ROM. BIOS settings might require changes to allow CD-ROM booting. Refer to your system documentation.
2. Follow the installation procedure for the SUSE OS.
If you do not provide a driver disk at boot time, the driver is loaded automatically during the installation process.

4.1.2 Creating a Driver Update Disk with a USB Drive

You can transfer a driver disk image to a USB drive with the rawrite tool from DOS®, or the dd utility in Linux. The URL for the rawrite tool is <http://www.tux.org/pub/dos/rawrite>. On a Linux machine, you can use the dd command to burn a driver ISO image on a USB drive.

Perform the following steps to create a driver update disk (DUD) with a USB drive.

1. Insert a USB stick into a Linux machine, making sure that the USB drive is not mounted.
2. Type the following command:

```
"$ dd if=<driver.iso> of=/dev/sdx"
```

Where /dev/sdx is the USB drive.

NOTE Make sure that you pick the correct DUD image from the Avago release bundle. The DUD image should match with the installed OS kernel version.

3. Press Enter.
4. Mount the USB stick to verify its contents.
5. Make sure the DUD image is in iso9660 format or MS-DOS format by typing the following command:

```
$df -T
```

6. Press Enter.

The file system type and other information about the mounted devices appear.

4.1.3 Installing from a Driver Update Diskette

To install the MegaSAS device driver in a new SUSE Linux Enterprise Server, create the driver update diskette by using the Linux driver image.

Perform the following steps to install the driver:

1. Refer to your system documentation, if needed, and boot the server with the installation CD or DVD.
2. At the installation message, perform one of the following actions:
 - Press F5 for SUSE Linux Enterprise Server 10.
 - Press F6 for SUSE Linux Enterprise Server 11.
 - Press F6 for SUSE Linux Enterprise Server 12.
3. Continue the installation procedure and, when prompted, insert the driver diskette.
The utility locates and loads the driver for your controller.
4. Press Alt+Ctrl+F4 to verify that the driver is loaded.
5. Press Alt+Ctrl+F1 to return to the installation.
6. Follow the SUSE installation procedure to complete the installation.

4.2 Installing or Updating the SUSE Linux Enterprise Server Driver

4.2.1 Installing the Driver by Using the Generic RPMs

Perform the following steps to install or upgrade to the latest version of the SLES 10, 11, or 12 driver by using the generic RPMs:

1. Boot the system.
2. Go to Console (your terminal GUI).
3. Perform the following steps to install the <kmod> RPM. In this example, the driver version is 06.602.03.00.
 - a. Uninstall the earlier version, if needed.
 - b. Extract the packaging from the Linux system by typing the following command and pressing Enter:

```
# tar -zxvf megaraid_sas_components.gz
```
 - c. For SLES10 (Service Pack 4) architecture = x86_64 flavor = default, type the following commands and press Enter:

```
# cd sles10/rpms-1
# rpm -ivh
lsi-megaraid_sas-kmp-default-06.602.03.00_sles10sp4-1.x86_64.rpm
```
 - d. For SLES11 (Service Pack 2), architecture = x86_64 flavor = default, type the following commands and press Enter:

```
# cd sles11/rpms-1
# rpm -ivh
lsi-megaraid_sas-kmp-default-06.602.03.00_sles11sp2-1.x86_64.rpm
```

NOTE You must select the correct RPM from the available bundled RPMs. Otherwise, you will see an RPM installed, but it will be for a different kernel version.

- e. For SLES12, architecture = x86_64 flavor = default, type the following commands and press Enter:

```
# cd sles12/rpms-1
# rpm -ivh lsi-megaraid_sas-kmp-default-06.602.03.00_sles12-1.x86_64.rpm
```

4. Reboot the system to load the driver.

4.2.2 Installing or Updating the Driver by Using the DKMS RPMs

Perform the following steps to install or update to the latest version of the SLES system driver by using the DKMS RPMs. In this example, the driver version is 06.602.03.00-1.

NOTE This DKMS packaging is provided only for SLES10(x86_64) and SLES11(x86_64) pre-compiled binaries.

1. Extract the packaging from the Linux system by typing the following commands and pressing Enter:

```
# tar -zxvf megaraid_sas-release.tar.gz
# cd dkms-1
# tar -zxvf megaraid_sas-06.602.03.00-1.dkms.tar.gz
```

2. Install the DKMS framework by typing the following commands and pressing Enter:

```
# rpm -ivh dkms-2.0.2.21.1-1.noarch.rpminstall DKMS rpm
# rpm -ivh megaraid_sas-06.602.03.00-1dkms.noarch.rpm
```

3. Reboot to load the driver with the newer version by typing the following command and pressing Enter:

```
# reboot
```

4.3 Uninstalling the SUSE Linux Enterprise Server Driver

NOTE When you uninstall the existing version of the driver, the driver rolls back to previous version of the driver.

Perform the following steps to uninstall the <kmod> RPM. In this example, the driver version is 06.602.03.00.

1. Type the following command and press Enter:

```
# rpm -qa | grep megaraid_sas
```

2. Find the string that contains the text megaraid_sas, and copy the string.
3. Type the following commands and press Enter:

```
# rpm -e megaraid_sas-06.602.03.00-1-sles10
# reboot
```

Chapter 5: Ubuntu Linux Driver Installation

This chapter describes how to install the device driver in new Ubuntu Linux systems, and how to update the driver on existing operating systems (OSs).

Refer to the release notes that accompanied the driver for information on an existing Ubuntu Linux system.

NOTE Other supported Ubuntu OS versions follow the same driver installation process described in the following section.

NOTE The Ubuntu OS does not support driver update diskettes.

5.1 Installing the Driver in a New Ubuntu Linux LTS OS

You can install the device driver in a new Ubuntu Linux LTS system from the `.deb` package, which contains the executables, configuration files, libraries, and documentation in a Debian archive file.

Ubuntu uses the Debian file format for OS components, and Avago provides the MegaRAID driver in this file format.

Perform the procedure in this section if the Ubuntu Linux OS boots from a device that is not managed by a MegaRAID controller, but in which the MegaRAID controller is or will be present on the system and used for managing secondary storage.

Assuming that you already have the `.deb` package, perform the following steps to install the driver.

1. If you are running the OS as root, perform the following steps; otherwise, go to step 2.
 - a. Make sure that you are running the OS as root. To do so, if you are logged in as a standard user, type the following command and press Enter:

```
sudo su
```

You are prompted for the password.

- b. Provide the password and press Enter.
 - c. In the directory where the package is located, type the following command and press Enter:

```
dpkg -i Package.deb
```

This action installs the driver on the Ubuntu OS.

2. Perform the following steps if you are not running the OS as root:
 - a. In the directory where the package is located, type the following command and press Enter:

```
sudo dpkg -i Package.deb
```

You are prompted for the password.

- b. Provide the password and press Enter.

This action installs the driver on the Ubuntu OS.

5.2 Removing the Driver in a New Ubuntu Linux LTS OS

To remove the device driver in an Ubuntu Linux system, perform the following procedure if the Ubuntu Linux OS boots from a device that is not managed by a MegaRAID controller, but in which the MegaRAID controller is or will be present on the system and used for managing secondary storage.

1. If you are running the OS as root, perform the following steps; otherwise, go to step 2:
 - a. Make sure that you are running the OS as root. To do so, if you are logged in as a standard user, type the following command and press Enter:

```
sudo su
```

You are prompted for the password.

- b. Provide the password and press Enter.
- c. In the directory where the MegaRAID SAS driver package is located, type the following command and press Enter:

```
$dpkg -r megaraid-sas
```

This action removes the driver from the Ubuntu OS.

2. Perform the following steps if you are not running the OS as root:
 - a. In the directory where the MegaRAID SAS driver package is located, type the following command and press Enter:

```
sudo $dpkg -r megaraid-sas
```

You are prompted for the password.

- b. Provide the password and press Enter.
This action removes the driver from the Ubuntu OS.

Chapter 6: FreeBSD Driver Installation

This chapter describes how to install the driver for the FreeBSD operating system (OS).

6.1 Avago MegaRAID Drivers and Software for the FreeBSD OS

This section describes the following topics:

- FreeBSD OS administration information
- Installing Avago drivers and software in the FreeBSD OS

FreeBSD OS Administration Information

You can find the latest FreeBSD OS administration information at:

http://www.freebsd.org/doc/en_US.ISO8859-1/books/handbook

http://www.freebsd.org/doc/en_US.ISO8859-1/books/handbook/disks-adding.html

You can search for manual pages online at <http://www.freebsd.org/cgi/man.cgi>

Installing Avago Drivers and Software in the FreeBSD OS

This section provides detailed instructions for installing the Avago driver in the FreeBSD OS.

The following sections describe these topics:

- Installing drivers for the FreeBSD OS
- Updating drivers in the FreeBSD OS

Driver Installation for the FreeBSD OS

This section describes how to install the driver for your MegaRAID controller in the FreeBSD OS:

- If the virtual drives you have created are your boot device, install the driver for the controller as you install the FreeBSD OS.
- If the operating system is already installed on a unit connected to another controller or to the motherboard, start the FreeBSD OS, and then install the driver.

NOTE If your FreeBSD system does not have the mpt driver issue, install your MegaRAID controller in the system before you install the Avago driver. Refer to the installation guide that came with your controller for instructions. You can download the installation guide at:
<https://www.freebsd.org/cgi/man.cgi?query=mrsas&sektion=4>.

This chapter describes these topics:

- Obtaining Avago FreeBSD OS drivers
- Creating a FreeBSD OS driver diskette
- Installing FreeBSD OS on storage managed by a MegaRAID controller (primary storage)
- Installing the kernel driver on a FreeBSD OS that boots from a device *not* managed by a MegaRAID controller (secondary storage)

6.2 Obtaining Avago FreeBSD Drivers

Avago drivers can be compiled from source files into the kernel as built-in drivers or they can be modules that are loaded manually or by the operating system. Both source files and modules are available from Avago, but modules with current controller drivers are available for the FreeBSD 9.2, 9.3, 10.0, and 10.1 operating systems.

You can obtain the MegaRAID controller driver for the FreeBSD OS from one of these two sources:

- Avago software CD-ROM, which includes the following items:
 - Compiled and tested kernel driver modules for the FreeBSD OSs are located at:
`components/<OS_Version>/<Architecture>`
- Driver source files for the FreeBSD OSs are located at the following path:
`components/src/mrsas.tgz`
- Avago website

You can download the latest compiled and tested driver modules, and the driver source files for the FreeBSD OS from the company website at www.avagotech.com/support/download-search.

6.3 Creating a FreeBSD OS Driver Diskette

You need a diskette to install the FreeBSD OS on a virtual drive or a drive that is managed by a MegaRAID controller. The virtual drive or drive then becomes the boot unit for which your version of the FreeBSD OS does not have an up-to-date built-in driver.

Follow these steps to create a driver diskette.

1. Insert a blank diskette and the Avago software CD into an installed FreeBSD OS.
2. Navigate to the following folder path, depending on your current FreeBSD OS version and the system architecture:
`components/<OS_Version>/<Architecture>/boot/kernel/mrsas.ko`
3. Copy the appropriate driver to the diskette.
 - This driver is the driver from the folder `i386` if you are installing the 32-bit FreeBSD OS, and the `amd64` folder if you are installing the 64-bit FreeBSD OS.
 - You need the driver source from the file `components/src/driver_name.tgz` to update the kernel with a new driver.

6.4 Installing the FreeBSD OS on Storage Managed by a MegaRAID Controller (Primary Storage)

This section describes how to load the FreeBSD OS kernel driver module to enable boot device support and then how to compile the current drivers into the kernel from source files.

Use the procedure in this section if your boot unit is going to be managed by the MegaRAID controller.

6.4.1 Installing the FreeBSD OS on Storage Managed by a MegaRAID Controller

Use the following procedure if your boot unit will be managed by the MegaRAID controller.

For the FreeBSD OS versions 9.x or 10.x, the FreeBSD system contains the `mfi(4)` driver as an inbox solution in the kernel. A new FreeBSD kernel ISO must to be created to exclude the `mfi(4)` driver before you load the `mrsas(4)`

driver module. With the newly created FreeBSD kernel ISO, you can complete the installation and boot your FreeBSD system through a MegaRAID virtual drive using the Avago's FreeBSD driver solution.

To exclude the mfi(4) driver if the FreeBSD OS has this issue, see [Section 6.4.2, Creating a Custom ISO Image to Exclude the mfi \(4\)](#).

After you create a custom FreeBSD Installation disk with the new FreeBSD kernel custom ISO image and you have the `mrsas` driver diskette ready, perform the following steps to install the FreeBSD OS. The procedure describes how to load the FreeBSD kernel driver module to enable boot device support and how to compile the current drivers into the kernel from source files.

As a prerequisite, you need an OS Installation CD for the FreeBSD 9.x or FreeBSD 10.x OSs (i386 or amd64). Use the CD that you created using the instructions in [Section 6.4.2, Creating a Custom ISO Image to Exclude the mfi \(4\)](#).

NOTE This procedure is specific to versions of the FreeBSD OSs for which a compiled module is available. For other versions of a FreeBSD OS for which a compiled module is not supplied by Avago, you must compile your own module from source files. [Section 6.6.2, Compiling and Loading the Driver as a Module by Using kldload \(Dynamically Loadable Module\)](#).

Perform the following steps to install the FreeBSD OS on storage managed by a MegaRAID controller:

1. Disconnect all SCSI, ATA, and SAS devices in the system, except for the CD/DVD drive, and the hard drives that are connected to the MegaRAID controller.
2. Create the RAID virtual drives on the MegaRAID controller using WebBIOS or Preboot CLI.
3. Insert the FreeBSD Installation disk into the CD/DVD drive, and boot from it.
4. At the FreeBSD boot menu, select **Escape to loader prompt** (option 2 in the FreeBSD 9.x OS, and option 3 in the FreeBSD 10.x OS).
5. Insert the diskette containing the `mrsas.ko` module for the specific version of the FreeBSD OS into the diskette drive.

If you use a USB flash drive, you might need to insert the drive before booting so the drive can be seen in the next step. If so, make sure to boot from the CD/DVD drive and not from the USB drive.

6. Perform the following steps at the loader prompt:
 - a. To load a new driver from a diskette drive, type the following commands and press Enter.

```
load disk0:mrsas.ko
```

NOTE If you have multiple units or devices for the OS installation, and the unit or device that you want to use for the installation is not `disk0`; change `disk0` to the appropriate number, such as `disk1` or `disk5`. The `lsdev` command lists all of the devices from which you can load the driver. If you use a USB flash drive, you might need to insert the flash drive before booting so that it can be accessed in this step.

7. To continue the installation procedure, type the following command, and press Enter.

```
OK boot
```

8. Install the FreeBSD OS, including the kernel source.
It is very important to include the kernel source files.
9. Remove both the FreeBSD installation disk from the CD/DVD drive, and the diskette from the diskette drive (or the USB flash drive, if used), and reboot.

10. On bootup, repeat step 4 through step 7.
11. Upon boot, continue with the instructions in [Section 6.6.1, Updating the Kernel with the New Driver Source](#), for a statically linked module.

6.4.2 Creating a Custom ISO Image to Exclude the mfi (4)

You must use this procedure if you are installing the FreeBSD OS on Storage Managed by a MegaRAID Controller (Primary Storage), which is described in [Section 6.4, Installing the FreeBSD OS on Storage Managed by a MegaRAID Controller \(Primary Storage\)](#). You must use this procedure if you need to exclude the mfi driver from the kernel from the kernel because it may conflict with mrsas(4).

This procedure is leveraged from the following locations:

A FreeBSD article, *FreeBSD Release Engineering, Section 3 Release Building*, by Murray Stokely.

See http://www.freebsd.org/doc/en_US.ISO8859-1/articles/releeng/index.html.

FreeBSD Handbook, Chapter 9 Configuring the FreeBSD Kernel, Section 9.5 Building and Installing a Custom Kernel.

See http://www.freebsd.org/doc/en_US.ISO8859-1/books/handbook/kernelconfig-building.html.

Because different versions of the FreeBSD OS have different make files, drivers, build procedures, and so on, the easiest way to create a custom ISO image for a specific version of the FreeBSD OS is to install the version of the FreeBSD OS that is needed for the ISO image. The procedure outlined in this section works for all supported versions of the FreeBSD OS (currently, versions 9.2.0, 9.3.0, 10.0.0 and 10.1.0). Some steps are different for FreeBSD version 9.2 or later, and are noted.

Perform the following steps to create the custom ISO image.

1. Install the required version of the FreeBSD OS on an available disk that is not attached to a MegaRAID controller. During installation, you must install all of the system source code. You might need a network connection to download the source code that is used to build the ISO image. The CD or the DVD that is used to install the OS might already contain the source code, depending on the type of installation that is on the CD or the DVD. Otherwise, you can use the `sysinstall` utility to download the source. The installed OS is used only to build the custom ISO, and then it is no longer required.
2. Boot to the disk with the new FreeBSD OS, and then change to the `/usr/src/sys/<arch>/conf` directory, where `<arch>` is either `i386` or `amd64`, depending on what type of architecture the ISO image is for. You must edit the generic kernel configuration file in this folder so that the mfi and mpt drivers are not installed when the new custom ISO is built. The mfi and mpt lines can be removed or commented out by adding `#` before `device`, as shown in the following examples:

```
#device      mfi      # LSI MegaRAID SAS
```

NOTE

The preferred method to use when you edit the generic configuration file is to copy it to another file, and then create a kernel using this new kernel configuration file. However, using that method here would require a more complex procedure and is unnecessary.

3. Issue the following commands to build the tools and the other items that are required to build the ISO image. This command can take several hours to complete.

```
# cd /usr/src
# make buildworld TARGET=<arch>
```

where `<arch>` is the architecture for the ISO image to be created.

4. Issue the following commands to build the ISO image.

The `make` command can take several hours to complete.

```
# cd /usr/src
# make buildkernel TARGET=<arch>
NOPTS=1 \
NODOC=1
```

Where `<arch>` is the architecture for the desired ISO image. Ports and Docs are not included in this example because it is faster and less complex to leave these values out of the build. If Ports and Docs were included, the build process might fail because more packages might be needed. Visit the FreeBSD website at <http://www.freebsd.org> for complete documentation about the `make release` command.

NOTE

The creation of the ISO image is the last step in the `make` process. If ISO image creation fails then run the `make` command again, but use the `rerelease` command instead of the `release` command. Using the `rerelease` command makes sure that the `make` process starts up from where it failed, and not from the start of the `make` process, which could save several hours.

5. After you successfully complete the `make` process, all of the new ISO images are located in the `/usr/obj/usr/src/release` directory.

6.5 Installing the Kernel Driver on a FreeBSD OS that Boots from a Device Not Managed by a MegaRAID Controller (Secondary Storage)

Perform the procedures in this section if the FreeBSD OS boots from a device that is *not* managed by a MegaRAID controller, but in which the MegaRAID controller is or will be present on the system and used for managing secondary storage.

When you use the virtual drive managed by the MegaRAID controller for secondary storage, you do not need to use a driver diskette for driver installation.

Install the FreeBSD OS on the drive attached to the motherboard *before* you install the MegaRAID controller. This step reduces the possibility of installing the FreeBSD OS to the wrong drive or unit.

Get the latest driver source files for your version of FreeBSD, see [Section 6.2, Obtaining Avago FreeBSD Drivers](#).

The following procedures document two types of OS installation:

- Installation on a system does not include an Avago controller before the OS installation.
- Installation on a system includes an Avago controller before the OS installation.

6.5.1 Installing the FreeBSD OS on a System that Does Not Include an Avago Controller before the OS Installation

Perform the following steps:

1. Install the FreeBSD OS, including the kernel source, on a motherboard attached drive.
It is critical to include kernel source files.
2. After the OS installation, reboot.

3. Follow the instructions for driver installation in [Section 6.6.1, Updating the Kernel with the New Driver Source](#), for a statically linked module, or in [Section 6.6.2, Compiling and Loading the Driver as a Module by Using kldload \(Dynamically Loadable Module\)](#).
4. After the FreeBSD OS is installed and the driver is updated, power down the system and install the MegaRAID controller.
For assistance, refer to the installation guide that came with the controller.

6.5.2 Installing the FreeBSD OS on a System that Includes an Avago Controller before the OS Installation

Perform the following steps:

1. Start the installation process.
2. Proceed with the installation on a drive attached to the motherboard.
Make sure you install the full the FreeBSD OS source.
3. After the OS installation, follow the instructions for driver installation in [Section 6.6.1, Updating the Kernel with the New Driver Source](#) for a statically linked module or in [Section 6.6.2, Compiling and Loading the Driver as a Module by Using kldload \(Dynamically Loadable Module\)](#).

6.6 Updating Drivers in the FreeBSD System

You can update drivers either from source files or with driver modules. By using source files, you can compile drivers into the kernel, or you can create modules for versions of the FreeBSD OS for which Avago does not supply modules.

This section includes these topics:

- Updating the kernel with the new driver source
- Compiling and loading the driver as a module using `kldload` (dynamically loadable module)
- Updating the MegaRAID kernel driver module in the FreeBSD OS

6.6.1 Updating the Kernel with the New Driver Source

Use this procedure to update your kernel from driver source files for both a dynamically loadable module and a statically linked module. To obtain the source files, see [Section 6.2, Obtaining Avago FreeBSD Drivers](#).

Perform the following steps to update your kernel with the driver source files:

1. Make sure that the kernel source has been installed on the system.
The kernel sources are in the `/usr/src/sys` directory.
2. Go to the `/usr/src/sys/dev/` directory and perform the following steps.
 - a. Check to see whether a directory with the driver name `mrsas` already exists. If a directory already exists, move it to a different folder.
 - To move the `mrsas` (4) driver, type the following command and press Enter:

```
# mv /usr/src/sys/dev/mrsas /root/mrsas.backup
```
3. Proceed to the `/usr/src/sys/modules/` directory and repeat step 2.

4. Unpack the compressed `mrsas` driver source file and move the `sys/dev/mrsas` directory to the `/usr/src/sys/dev/mrsas` directory.
 - a. Enter the `# cp -r <uncompressed_directory>/sys/dev/mrsas /usr/src/sys/dev/` command.
 - b. Enter the `# cp -r <uncompressed_directory>/sys/modules/mrsas /usr/src/sys/modules/` command to copy the `sys/modules/mrsas` directory to the `/usr/src/sys/modules/` directory.
5. Go to `/usr/src/sys/i386/conf` if you are running a 32-bit version of the FreeBSD OS, or `/usr/src/sys/amd64/conf` if you are running a 64-bit version of the FreeBSD OS, and perform the following steps:
 - a. Copy the GENERIC configuration file to another file name. For example:

```
# cp GENERIC MYKERNEL
```
 - b. Open your current configuration file (GENERIC, MYKERNEL, SMP, or PAE, or custom configuration), with `vi` or another editor. For example:
 - For a dynamically loadable module, comment out the following lines by typing `#` at the start of the line:
For the `mrsas` driver, comment out the following line by typing `#` at the start of the line, if it exists:

```
#device mfi # LSI MegaRAID SAS
#device mrsas # LSI MegaRAID SAS2
```
 - For a statically linked module, make sure the following lines are *not* commented out:
For the `mrsas` driver, make sure the following line is *not* commented out:

```
device mrsas # LSI MegaRAID SAS2
```
 - If you do not have a MegaRAID 92XX or earlier controller installed in your system, make sure to comment out the following line:

```
#device mfi # LSI MegaRAID SAS
```
 - c. Save your changes.

NOTE Each line is an entry in this file. Make sure a newly added entry is on a new line.

- d. In the `/usr/src/sys/conf/` file, perform the following steps for the `mfi` driver or the MegaRAID SAS driver, depending on which driver you use:

For the `mrsas` driver, make sure that the following entries are present:

```
dev/mrsas/mrsas.c          optional mrsas
dev/mrsas/mrsas_cam.c     optional mrsas
dev/mrsas/mrsas_ioctl.c   optional mrsas
dev/mrsas/mrsas_fp.c      optional mrsas
dev/mrsas/mrsas_linux.c   optional mrsas
```

NOTE Make sure if a new `*.c` file is added, then entry for that should be added in the same manner as above. Each line is an entry in this file. Make sure a newly added entry is on a new line.

- e. Save your changes.
- f. To compile the kernel, go to the `/usr/src` directory, type the following commands if your current configuration is MYKERNEL, and press Enter.

```
# cd /usr/src
```

```
# make buildkernel KERNCONF=MYKERNEL
```

- g. To install the new kernel, type the following commands if your current configuration is MYKERNEL, and press Enter.

```
# make installkernel KERNCONF=MYKERNEL
```

The new kernel is copied to the `/boot/kernel` directory. The old kernel is moved to the `/boot/kernel.old` directory.

6. Reboot your system to use the new kernel.
When the system reboots, the new kernel driver module loads automatically.

6.6.2 Compiling and Loading the Driver as a Module by Using `kldload` (Dynamically Loadable Module)

To use a driver module in case Avago does not supply a driver module for your version of the FreeBSD OS, use the procedures in this section. If you want to install only an Avago-supplied module, see [Section 6.6.3, Updating the MegaRAID Kernel Driver Module in the FreeBSD OS](#).

NOTE You can use `kldload` to load the driver as a module only if your boot drive is attached to the mother board and is not managed by the MegaRAID controller.

Perform the following steps to compile the driver as a module:

1. Boot to the FreeBSD OS.
2. Obtain driver source files; see [Section 6.2, Obtaining Avago FreeBSD Drivers](#).
3. Make sure your kernel is prepared for the dynamically loadable module described in [Section 6.6.1, Updating the Kernel with the New Driver Source](#).
4. To build the driver module, type the following command, depending on which driver you use, and press Enter.

```
# cd /usr/src/sys/modules/mrsas  
# make clean  
# make
```

These steps create the driver `mrsas.ko` module in the `/usr/src/sys/modules/mrsas` directory.

5. To load the kernel driver module, type the following commands and press Enter.
6. To load the driver automatically during bootup, but still be linked dynamically, perform the following steps, depending on which driver you use:

To copy the MegaRAID SAS driver into the boot folder, type the following command, and press Enter.

```
# cp /usr/src/sys/modules/mrsas/mrsas.ko /boot/kernel/mrsas.ko
```

NOTE Back up the old module in case you want to revert back to it.
Enter the following line in the `/boot/loader.conf` file.
`mrsas_load="YES"`

6.6.3 Updating the MegaRAID Kernel Driver Module in the FreeBSD OS

This section describes how to update the MegaRAID driver with a kernel driver module in the FreeBSD OS.

NOTE Make a backup of your original driver before updating the MegaRAID driver in case you need to revert back to it. However, you cannot revert back to the original driver if you are booting from that unit.

Perform the following steps to update the MegaRAID driver with a kernel driver module under the FreeBSD OS.

1. Download and extract the driver.

See [Section 6.2, Obtaining Avago FreeBSD Drivers](#), for instructions.

2. Back up any critical data before you update the MegaRAID driver.
3. Change the directory to the location with the extracted driver.
4. To copy the driver into the `/boot/kernel` directory, type the following command, and press Enter.

```
# cp mrsas.ko /boot/kernel.
```

Make sure that the module version (32-bit or 64-bit) matches the FreeBSD version. If the versions do not match, a kernel panic might occur.

5. To load the driver, type the following command, and press Enter.

```
# kldload -v /boot/kernel/mrsas.ko
```

If storage is present, the system log records its presence (usually in `/var/log/messages`).

6. To have the driver load automatically every time the system reboots, add the following line to the `/boot/loader.conf` file, and press Enter.

```
mrsas_load="YES".
```

Chapter 7: VMware Driver Installation

This chapter describes how to install and update the VMware device drivers on VMware ESXi 5.x, vSphere® 5.x, and ESXi 6.x operating systems.

7.1 Installing Asynchronous Drivers on the VMware ESXi 5.x and 6.x Operating System

An existing ESXi host can install drivers from a specific VIB file or from a `megaraid_sas.zip` file.

7.1.1 Using `esxcli` and the Asynchronous Driver VIB File in an Existing ESXi Installation

An existing ESXi host can install asynchronous drivers from an asynchronous driver VIB file. The VIB file is copied to the ESXi host by using the datastore browser, and then installed using the `esxcli` utility in the ESXi Shell.

NOTE This procedure requires remote ESXi network connectivity using vSphere client.

Perform the following steps to install the asynchronous drivers:

1. Extract the contents of the asynchronous driver zip file.
2. Identify the `megaraid_sas.zip` file.
3. Extract the contents of the `megaraid_sas.zip` file.
4. Identify the `async-driver.vib` file.
5. Log in to the ESXi host using vSphere client with administrator privileges, such as root.
6. Using the Datastore Browser, upload the `async-driver.vib` file to an ESXi host's datastore.
7. Enter the host into Maintenance mode.

NOTE You can enter host into maintenance mode through the vSphere Client, or by adding the `--maintenancemode` option to the `esxcli` command.

8. Log in as root to the ESXi console through SSH or iLO/DRAC.
9. To install drivers from the VIB file (this action requires an absolute path), type the following command, and press Enter.

```
esxcli software vib install -v /path/async-driver.vib
```

For example:

```
esxcli software vib install -v /vmfs/volumes/datastore/async-driver.vib
```

10. Reboot the ESXi host.
11. Exit Maintenance mode.

NOTE You can update an ESX host remotely by using the `esxcli` utility, which is part of the vSphere CLI. For more details on using this utility, refer to the vSphere Command-Line Interface Documentation page.

7.1.2 Using esxcli and an Offline Bundle Async Driver Zip File in an Existing ESXi Installation

In this procedure, you copy the offline bundle zip file to the ESXi host by using the Datastore Browser and install it by using the `esxcli` utility in the ESXi shell.

NOTE This procedure requires remote ESXi network connectivity using vSphere client.

Perform the following steps to install the async drivers:

1. Extract the contents of the async driver zip file.
2. Identify the `megaraid_sas.zip` file.
3. Log in to the ESXi host using vSphere client with administrator privileges, such as root.
4. Using the Datastore Browser, upload the `megaraid_sas.zip` file to an ESXi host's datastore.
5. Enter the host into Maintenance mode.

NOTE You can enter host into Maintenance mode through the vSphere Client or by adding the `--maintenancemode` option to the `esxcli` command.

6. Log in as root to the ESXi console through SSH or iLO/DRAC.
7. To install drivers using the offline bundle (this action requires an absolute path), type the following command, and press Enter.

```
esxcli software vib install -d /path/megaraid_sas.zip
```

For example:

```
esxcli software vib install -d /vmfs/volumes/datastore/megaraid_sas.zip
```

8. Reboot the ESXi host.
9. Exit Maintenance mode.

7.1.3 Installing an Upgrade

The upgrade process is similar to a new installation, except for the `esxcli` command.

- To upgrade, type the following command, and press Enter.

```
esxcli software vib update -v {VIBFILE}
```

NOTE Before you run the `esxcli` command, enter the ESXi host into Maintenance mode. You can enter the host into Maintenance mode through the vSphere Client, or by adding the `-maintenancemode` option to the `esxcli` command.

7.1.4 Installing the VMware Update Manager

The VMware Update Manager (VUM) is a plug-in for the Virtual Center Server (vCenter Server™). You can use the VUM utility to install a VIB by importing the associated offline bundle package (a ZIP file that contains the VIB and metadata). You can then create an add-on baseline and re-mediate the host or hosts with this baseline.

Refer to the vCenter Server documentation for more information about the VUM.

Chapter 8: Solaris Driver Installation

This chapter describes how to use the MegaRAID SAS Driver Package Update to install the Avago MegaRAID controller driver for the Solaris OS. The following topics are documented:

- Contents of the driver distribution
- Supported hardware
- Supported operating system
- Installing the driver package during OS installation
- Installing or upgrading the driver package after OS installation
- Removing the driver package
- Notes

NOTE

[Section 8.4, Installing the Driver Package during OS Installation \(Solaris10 OS, x86 Only\)](#) and [Section 8.5, Installing the Driver Package during Operating System Installation \(Solaris11 OS, x86 Only\)](#), apply to the x86 architecture only. The other sections apply to both x86 architecture and SPARC architecture.

8.1 Contents of the Driver Distribution

The driver distribution contains the following files:

- README – Driver readme file
- `mr_sas.img` – 3.5-in. 1.44-MB diskette image
- `mr_sas.iso` – CD-ROM image
- `mr_sas.tar.Z` – Package image

8.2 Supported Hardware

This driver supports the following Avago MegaRAID controllers:

- The 2108-based family of MegaRAID controllers
- The 2208-based family of MegaRAID controllers
- The 3108-based family of MegaRAID controllers

8.3 Supported Operating Systems

This driver supports the Solaris 10 and Solaris 11 OSs on both the x86 and the SPARC platforms. The following driver binaries (built natively) are included in this driver distribution (`.zip` file) and the corresponding supported OSs.

- Solaris 11 and Solaris 11-U1 (x86) OSs
Use the driver package under the directory `intel/solaris11/`.
- Solaris 10-U9 and Solaris 10-U10 (x86) OSs
Use the driver package under the directory `intel/solaris10-u9/`.

- Solaris 11 and Solaris 11-U1 (SPARC) OSs,
Use the driver package under the directory `sparc/solaris11/`.
- Solaris 10-U9 and Solaris 10-U10 (SPARC) OSs
Use the driver package under the directory `sparc/solaris10-u9/`.

8.4 Installing the Driver Package during OS Installation (Solaris10 OS, x86 Only)

Perform the following procedure to install the Solaris 10 OS on any of the supported Avago MegaRAID controllers as a boot-controller (primary storage).

1. Boot the Solaris installation to the following menu:
 1. Solaris Interactive (default)
 2. Custom JumpStart
 3. Solaris Interactive Text (Desktop session)
 4. Solaris Interactive Text (Console session)
 5. Apply driver updates
 6. Single user shell
2. Enter the number of your choice.
3. Select option 5, Apply driver updates.
4. Insert the Avago driver CD, and choose the CD/DVD option at the following prompt:

```
Insert media and enter media type:  
Floppy, CD/DVD or End
```

The following messages indicate that the driver is successfully installed:

```
extracting software on cd  
installing driver update in the miniroot
```

5. After applying the driver, the Solaris OS returns to the following prompt:

```
Insert media and enter media type:  
Floppy, CD/DVD or End
```
6. Select End.
The Solaris OS continues with the installation.
7. Re-insert the Solaris media when prompted to complete this step and proceed with the installation.

8.5 Installing the Driver Package during Operating System Installation (Solaris11 OS, x86 Only)

Perform the following procedure to install the Solaris 11 OS on any of the supported Avago MegaRAID controllers as a boot-controller (primary storage).

1. Insert the Solaris 11 text install DVD, and boot into the Solaris installation menu.
2. Select the option [2] Install Additional Drivers.
3. Press F9 (Quit), and return to the installation menu.

4. In the installation menu, select [3] Shell.
5. Copy the driver package `components.tgz` to the `/tmp` directory, and type the following commands to extract the driver:

```
# tar -zxvf components.tgz
# uncompress mr_sas.Z
# tar -xf mr_sas.tar
```
6. Install the Avago MegaRAID SAS Driver/ Package using the following command:

```
# pkgadd -d .
```
7. Select [1] Install and continue to complete the Solaris 11 OS installation.

8.6 Installing the Driver Package during Operating System Installation (Solaris11.1 OS, x86 Only)

1. Contents of the driver distribution package
 - The driver distribution for each OS component contains the following files.
 - `mr_sas.img` – 3.5-in. 1.44-MB diskette image
 - `mr_sas.iso` – CD-ROM image
 - `mr_sas.tar.Z` – Package image
2. Supported Hardware

This driver supports the following Avago MegaRAID controllers:

 - The 2108-based family of MegaRAID controllers
 - The 2208-based family of MegaRAID controllers
 - The 3108-based family of MegaRAID controllers
3. Supported Operating Systems

This driver supports the Solaris10 and Solaris11 OS releases on both x86 and SPARC platforms. The following driver binaries (built natively) are included in this driver distribution (`.tgz` file) and the corresponding supported OS releases.

 - Solaris 11 and Solaris 11-U1 (x86) OS.
Use the driver package found in the `intel/Solaris11/` directory.
 - Solaris 10-U9 OS and Solaris 10-U10 (x86) OS.
Use the driver package found in the `intel/Solaris10/` directory.
 - Solaris 11 and Solaris 11-U1 (SPARC) OS.
Use the driver package found in the `sparc/Solaris11/` directory.
 - Solaris 10-U9 and Solaris 10-U10 (SPARC) OS.
Use the driver package found in the `sparc/Solaris10/` directory.

NOTE The SAS3 controllers (SAS 3XXX chip based controllers) are *not* supported on the SPARC platform. Refer to the corresponding OS documents for procedures on how to use the driver component.

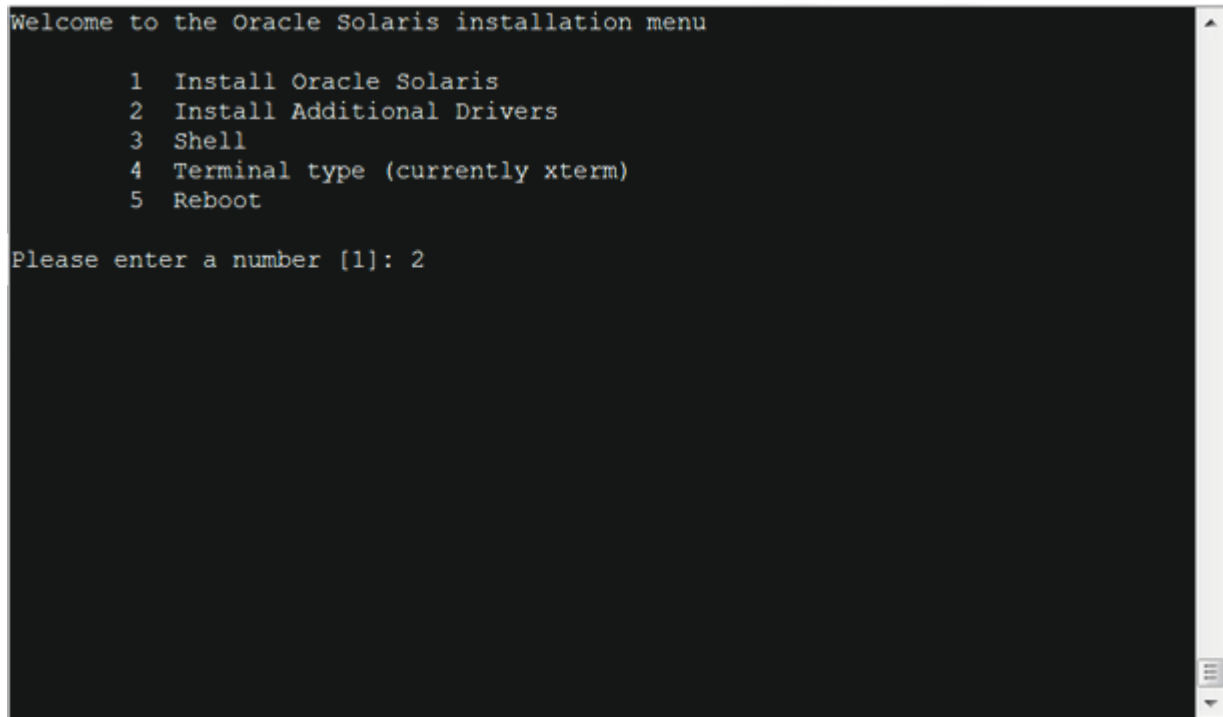
Perform the following procedure to install the Solaris 11.1 OS on any of the supported Avago MegaRAID controllers as a boot controller (primary storage).

1. Copy the `6.606.07.00 mr_sas.iso` file to a USB flash drive and plug that drive into the installation system.

2. Boot to the Solaris 11.1 DVD in the installation system, select the keyboard and language.
3. After the DVD boots, a screen showing a choice of five options appear, select Option 2 (Install Additional Drivers).

The following screen appears.

Figure 15 Solaris Installation Menu



```
Welcome to the Oracle Solaris installation menu

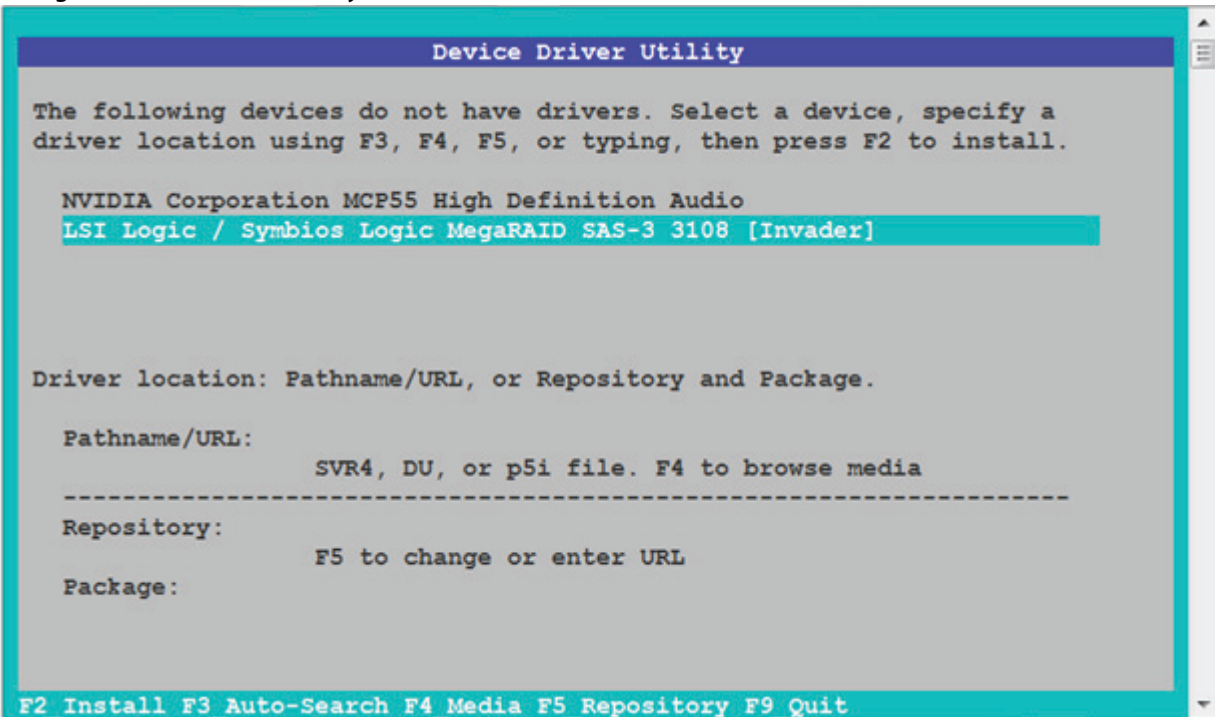
  1  Install Oracle Solaris
  2  Install Additional Drivers
  3  Shell
  4  Terminal type (currently xterm)
  5  Reboot

Please enter a number [1]: 2
```

4. After a few seconds, the Invader card should appear in the screen; highlight the Invader card, but do not press Enter.

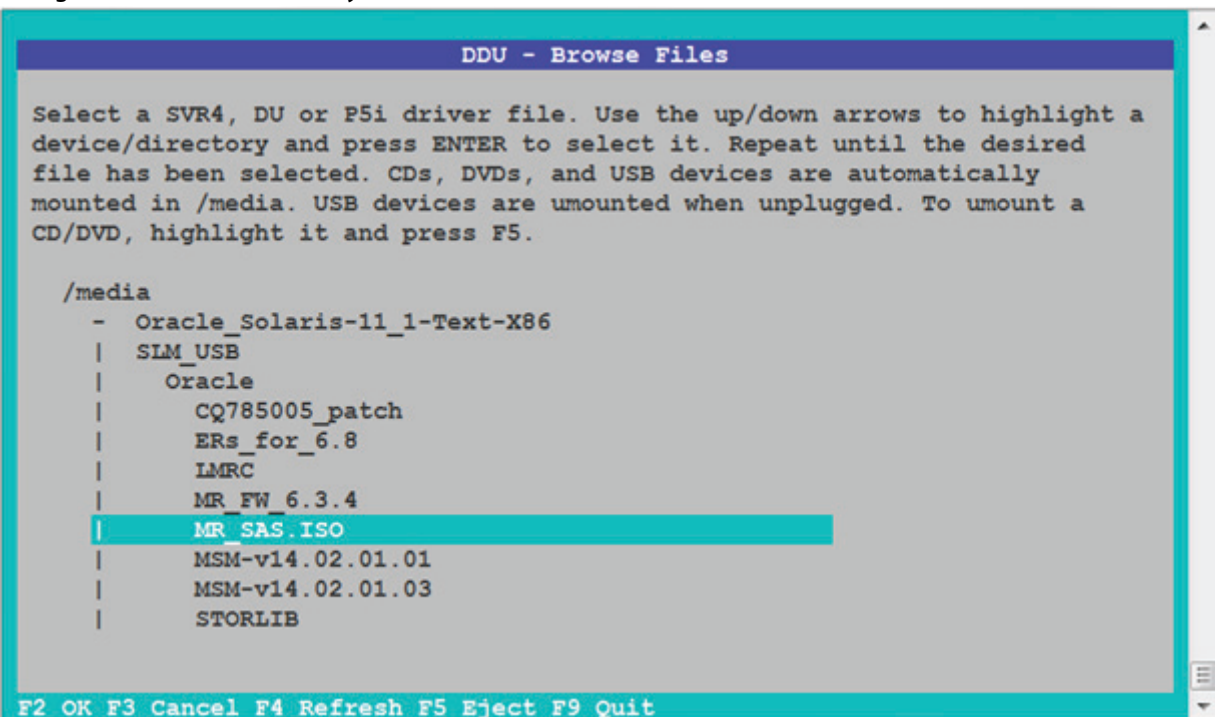
The **Device Driver Utility** screen appears.

Figure 16 Device Driver Utility Screen



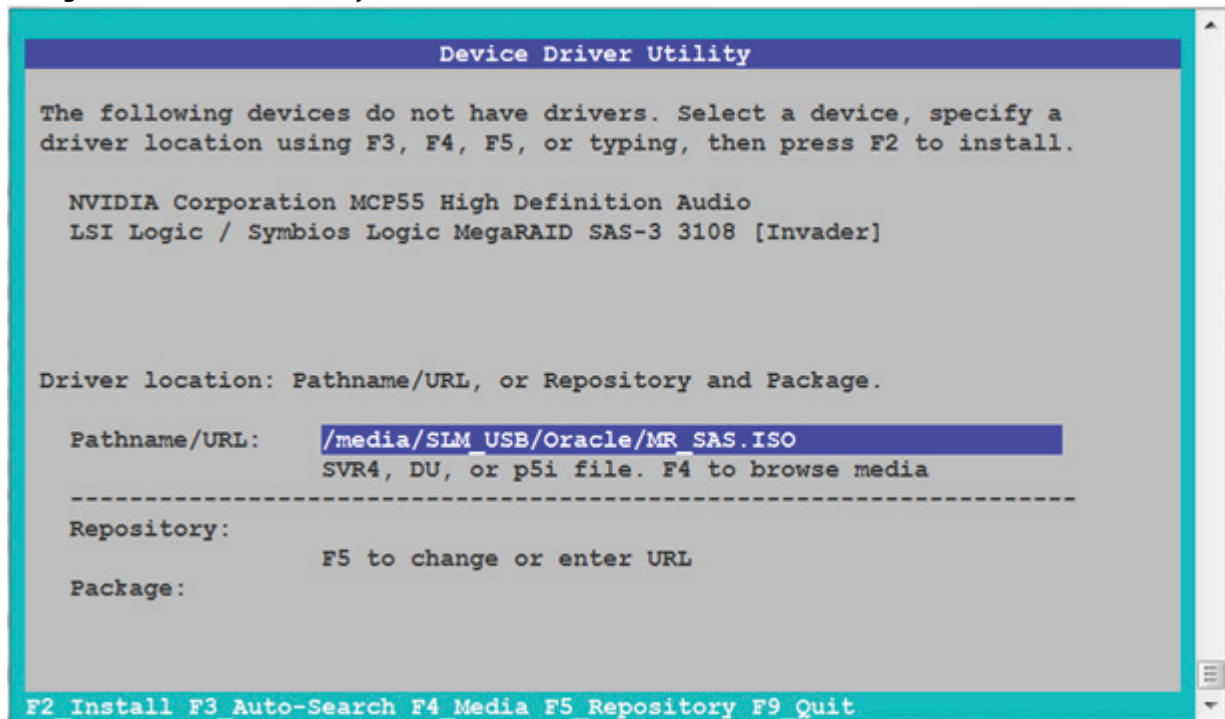
5. Press the F4 key (Media) to search for the ISO file on your flash drive.
Find the location of the `mr_sas.iso` file on the flash drive, highlight it, and press the F2 key to select it.

Figure 17 Device Driver Utility – Browse Files Menu



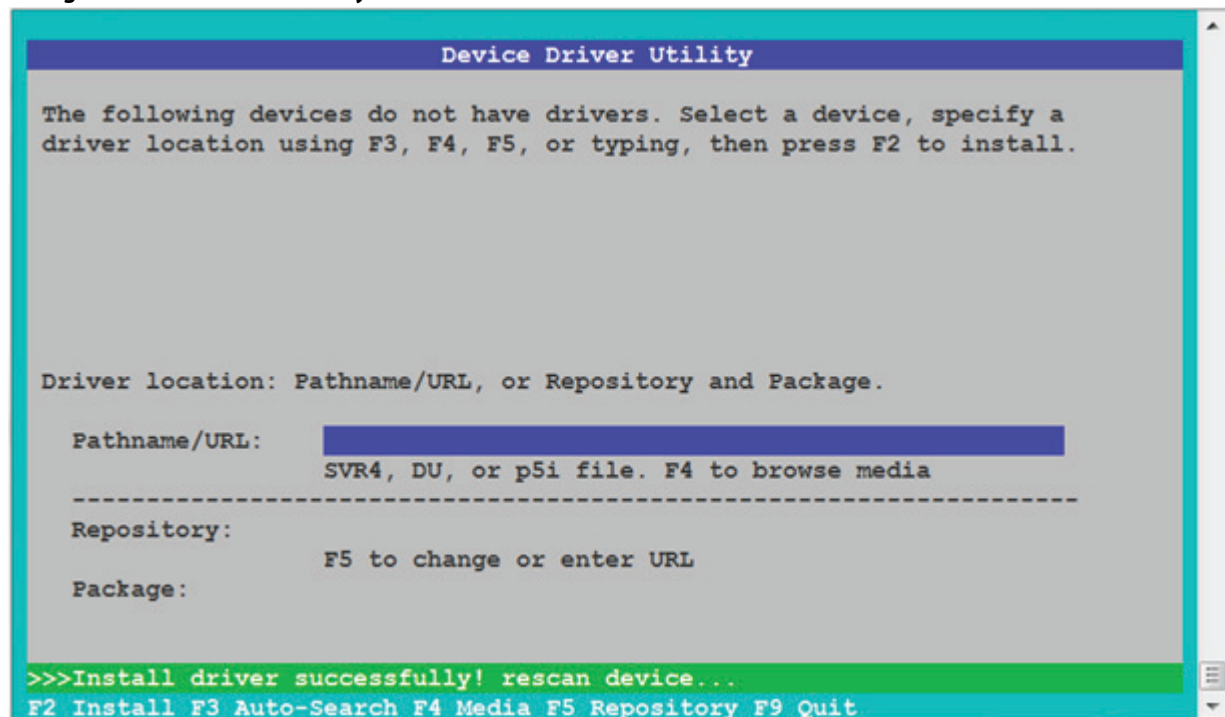
6. Press the F2 key again to install the driver.
The following **Device Driver Utility** screen appears.

Figure 18 Device Driver Utility Pathname Menu



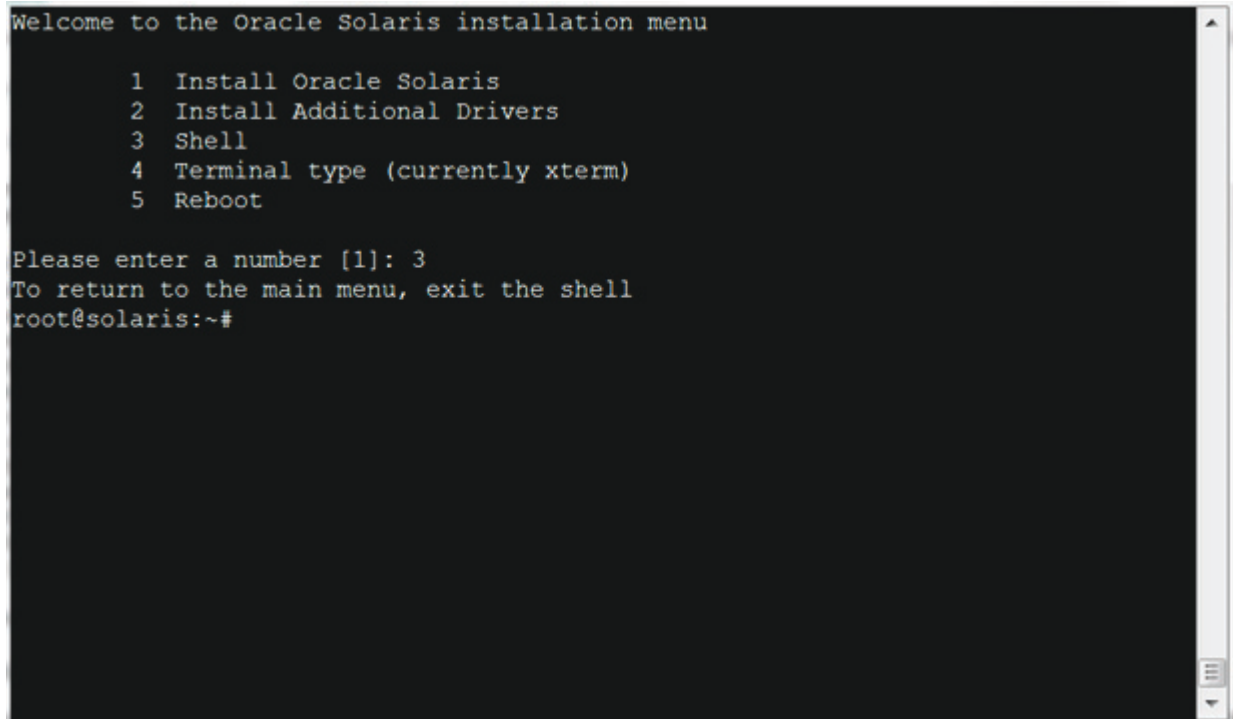
7. If the installation succeeds press the F9 key to exit to the **Options** menu.
The following screen appears.

Figure 19 Device Driver Utility Success Screen



8. Select Option 3 (Shell) as shown in the following figure.

Figure 20 Solaris Installation Menu – Option 3 (Shell)



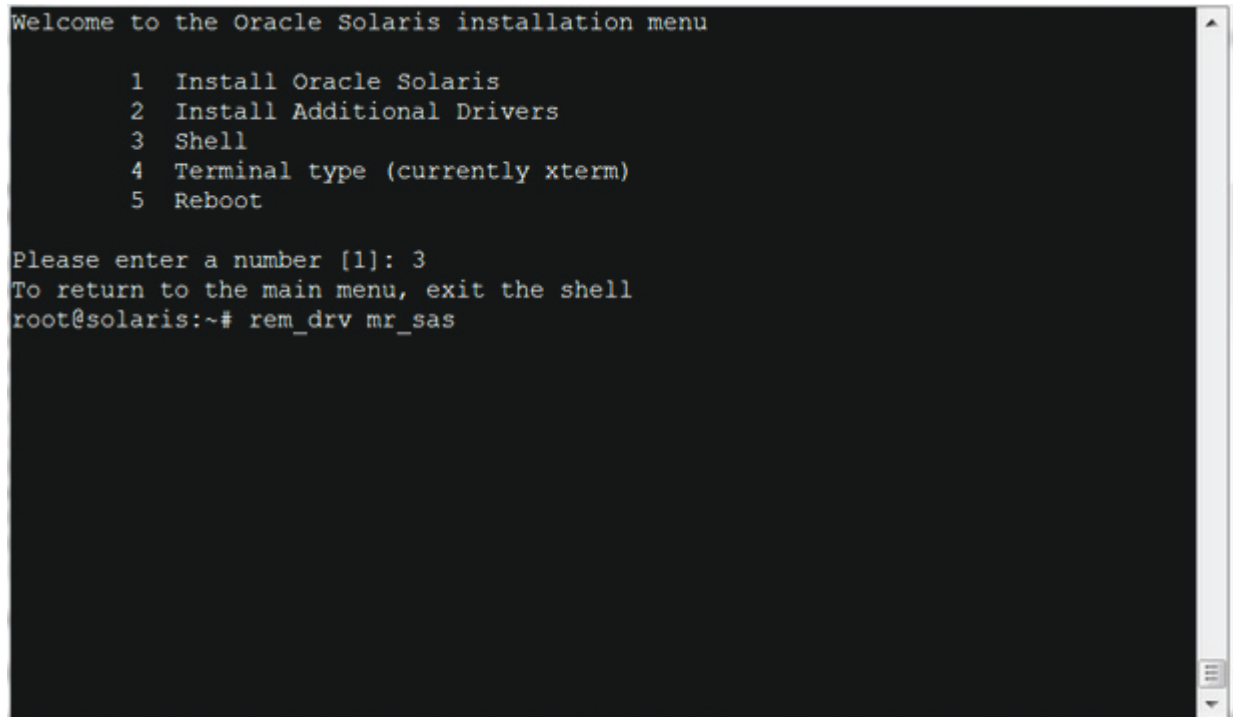
```
Welcome to the Oracle Solaris installation menu

 1  Install Oracle Solaris
 2  Install Additional Drivers
 3  Shell
 4  Terminal type (currently xterm)
 5  Reboot

Please enter a number [1]: 3
To return to the main menu, exit the shell
root@solaris:~#
```

9. Remove the currently loaded MegaRAID SAS driver by typing (do not type the ~# sign) `rem_drv mr_sas` as shown in the following figure.

Figure 21 Solaris Installation Menu – Remove Driver



```
Welcome to the Oracle Solaris installation menu

 1  Install Oracle Solaris
 2  Install Additional Drivers
 3  Shell
 4  Terminal type (currently xterm)
 5  Reboot

Please enter a number [1]: 3
To return to the main menu, exit the shell
root@solaris:~# rem_drv mr_sas
```

10. Add the 6.606.07.00 `mr_sas` driver by typing `# add_drv -i 'pciex1000,5d' mr_sas`.

Figure 22 Solaris Installation Menu – Add Driver

```
Welcome to the Oracle Solaris installation menu

  1  Install Oracle Solaris
  2  Install Additional Drivers
  3  Shell
  4  Terminal type (currently xterm)
  5  Reboot

Please enter a number [1]: 3
To return to the main menu, exit the shell
root@solaris:~# rem_drv mr_sas
root@solaris:~# add_drv -i 'pciex1000,5d' mr_sas
```

11. Go back to the **Options** menu by typing `exit` at the `~#` prompt.

Figure 23 Solaris Installation Menu – Exit

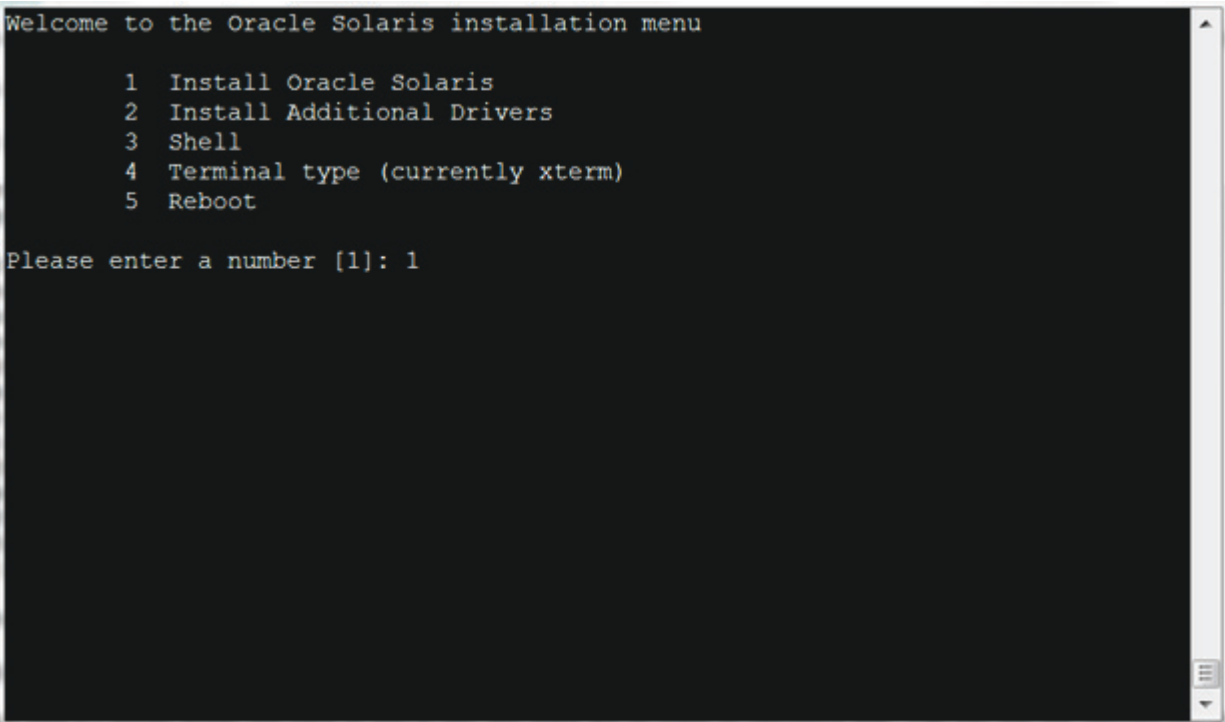
```
Welcome to the Oracle Solaris installation menu

  1  Install Oracle Solaris
  2  Install Additional Drivers
  3  Shell
  4  Terminal type (currently xterm)
  5  Reboot

Please enter a number [1]: 3
To return to the main menu, exit the shell
root@solaris:~# rem_drv mr_sas
root@solaris:~# add_drv -i 'pciex1000,5d' mr_sas
root@solaris:~# exit
```

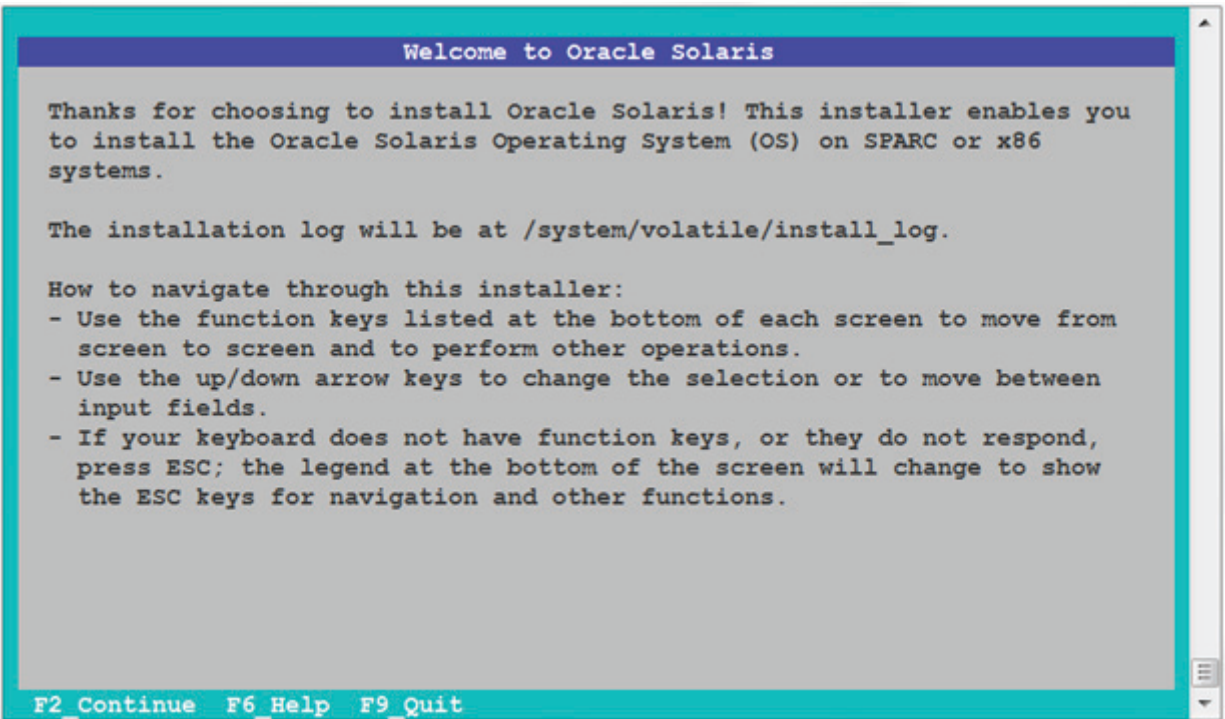
12. Enter Option 1 (Install Oracle Solaris) as shown in the following figure.

Figure 24 Solaris Installation Menu – Option 1



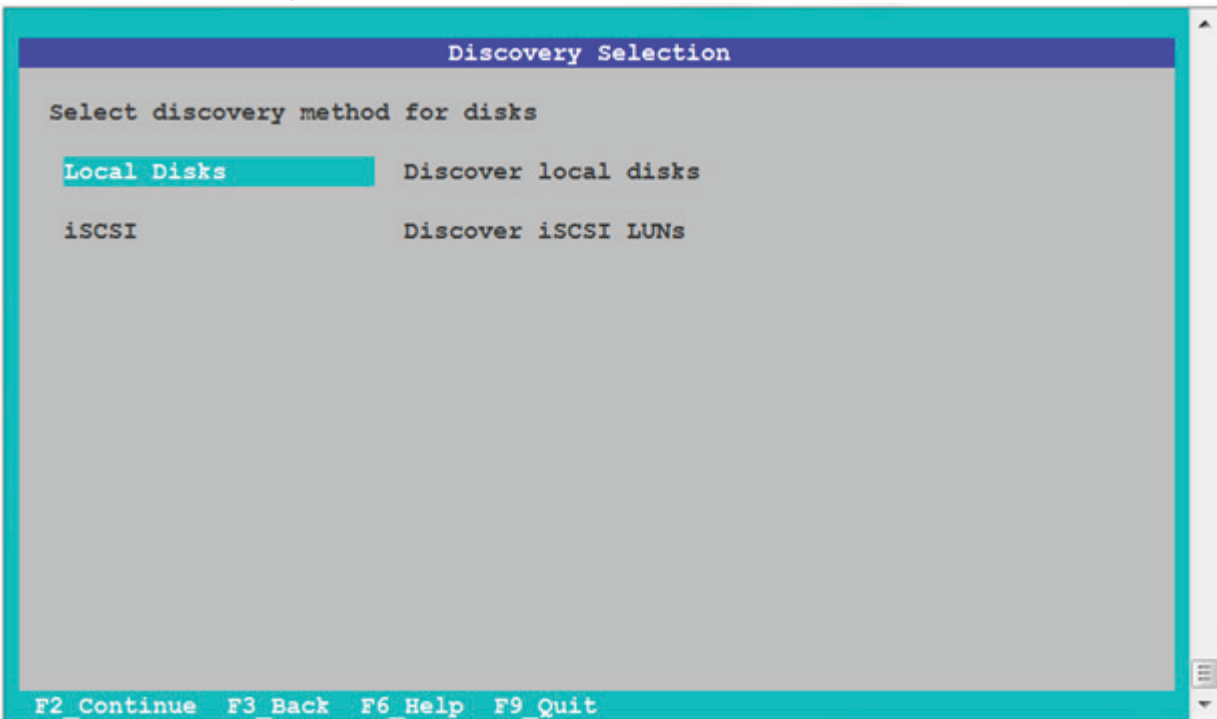
The following figure appears.

Figure 25 Oracle Solaris Welcome Screen



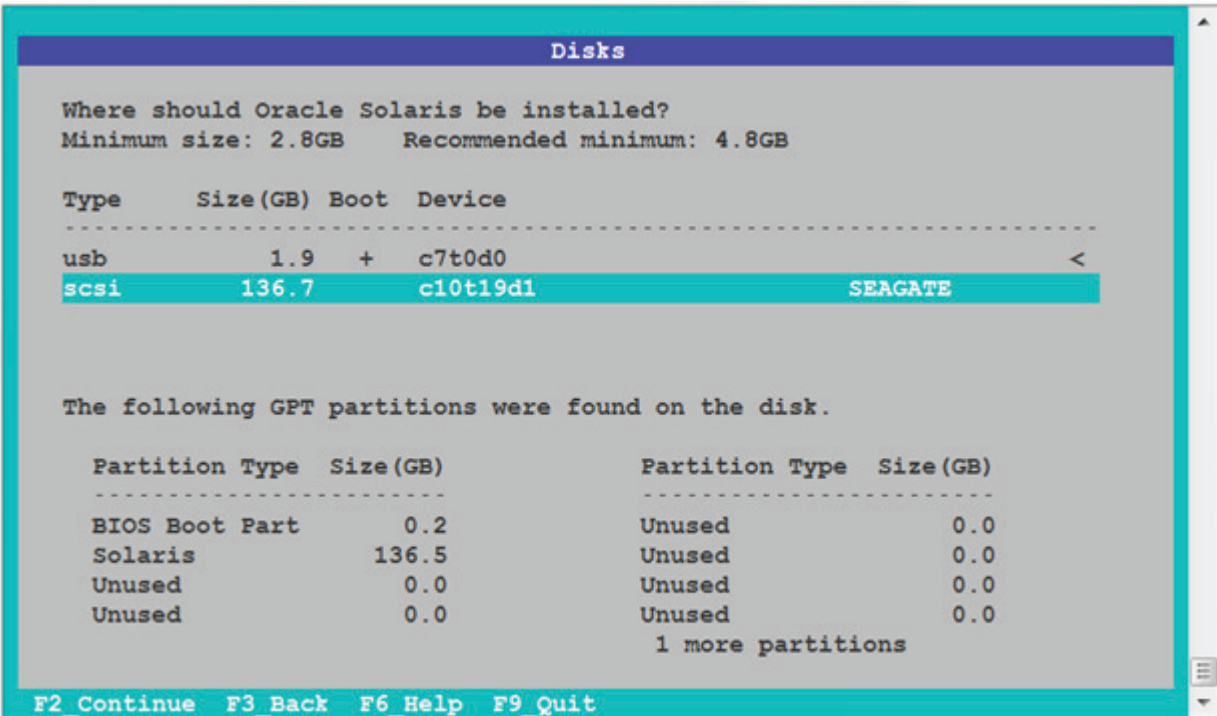
13. Press the F2 key to continue. The following screen appears.

Figure 26 Disk Discovery Selection Screen



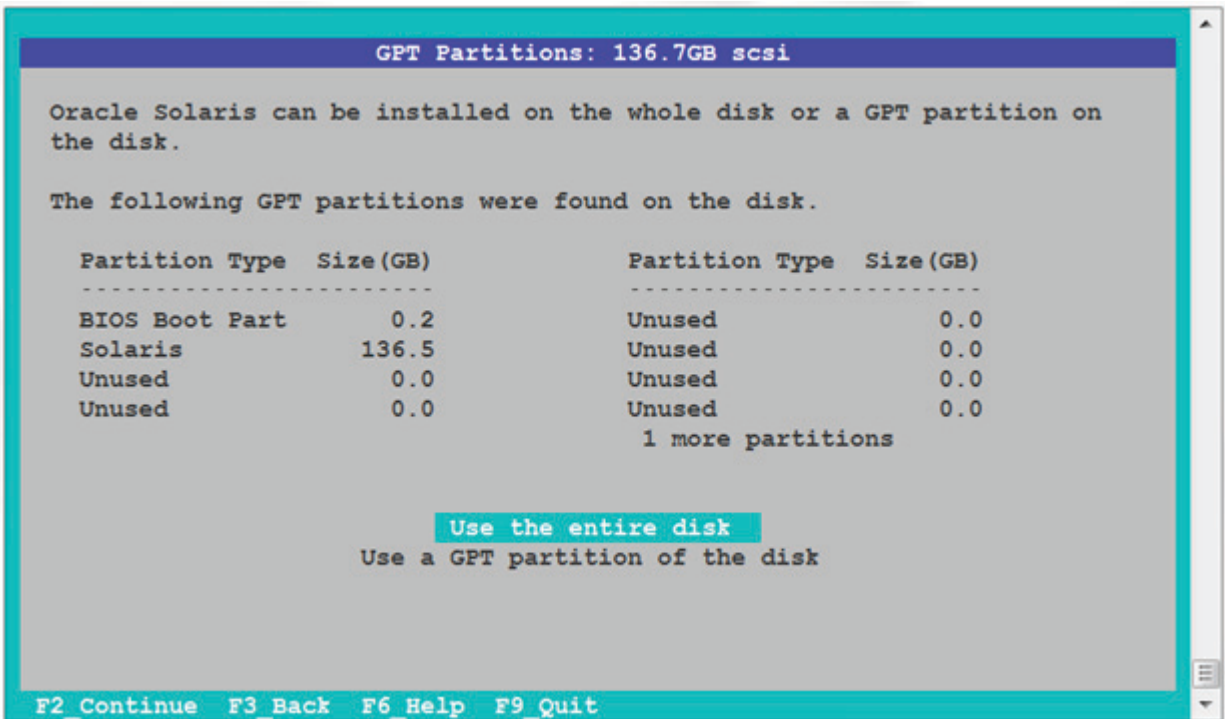
14. Select the disk discovery method and press the F2 key to continue. The following screen appears.

Figure 27 Disks Screen



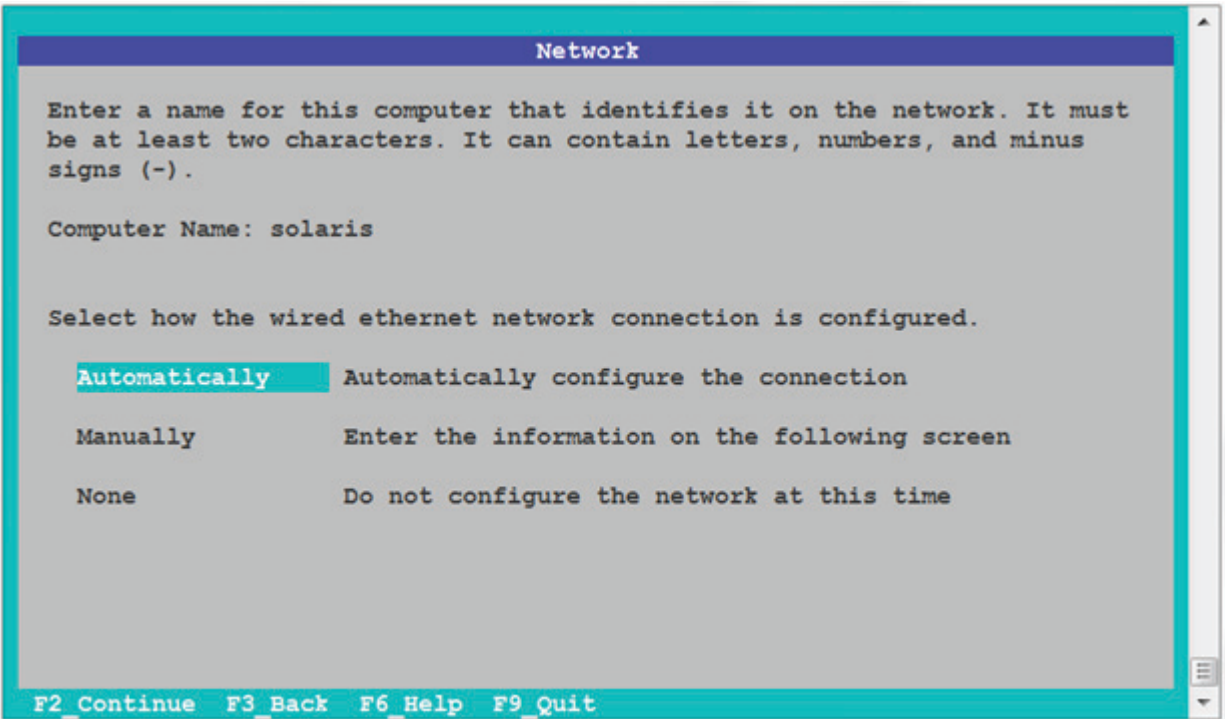
15. Select the disk on which to install Oracle as shown in the following screen and press the F2 key to continue. The following screen appears.

Figure 28 Oracle Installation Partition Screen



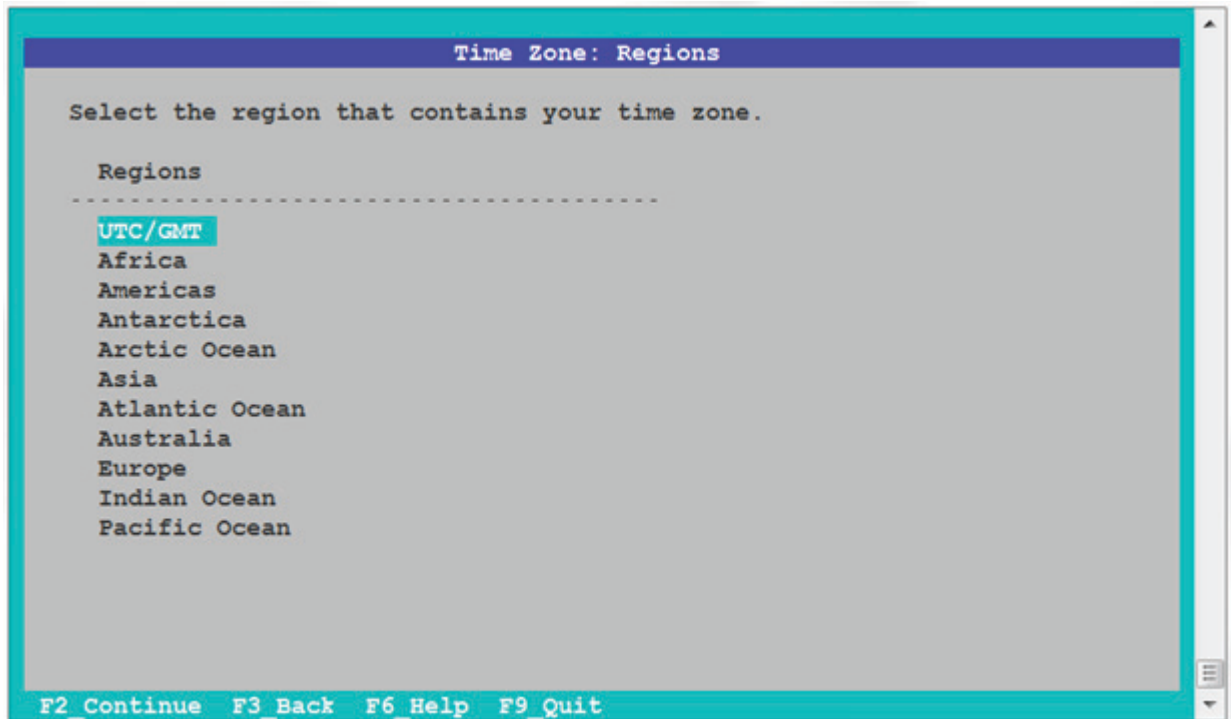
16. Select the partition to use and press the F2 key to continue. The following screen appears.

Figure 29 Network Identification Screen



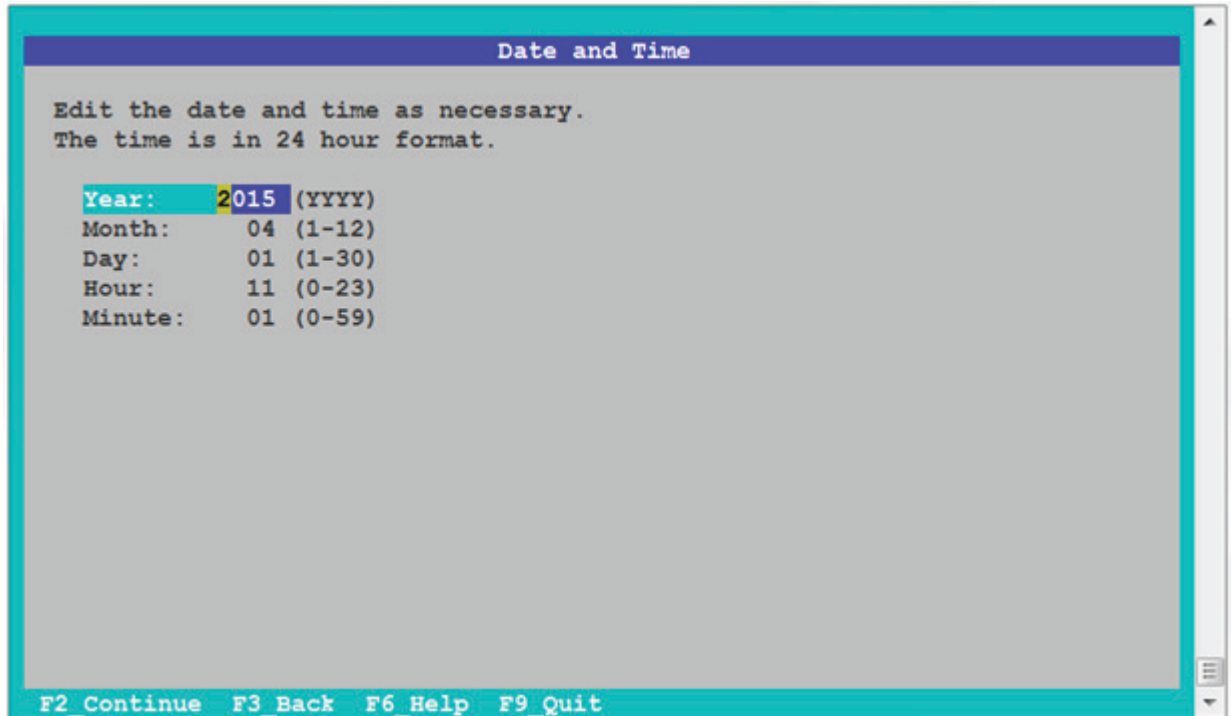
17. Enter a computer name and select the portion of the disk on which to install Oracle and press the F2 key to continue. The following screen appears.

Figure 30 Select Time Zone Screen



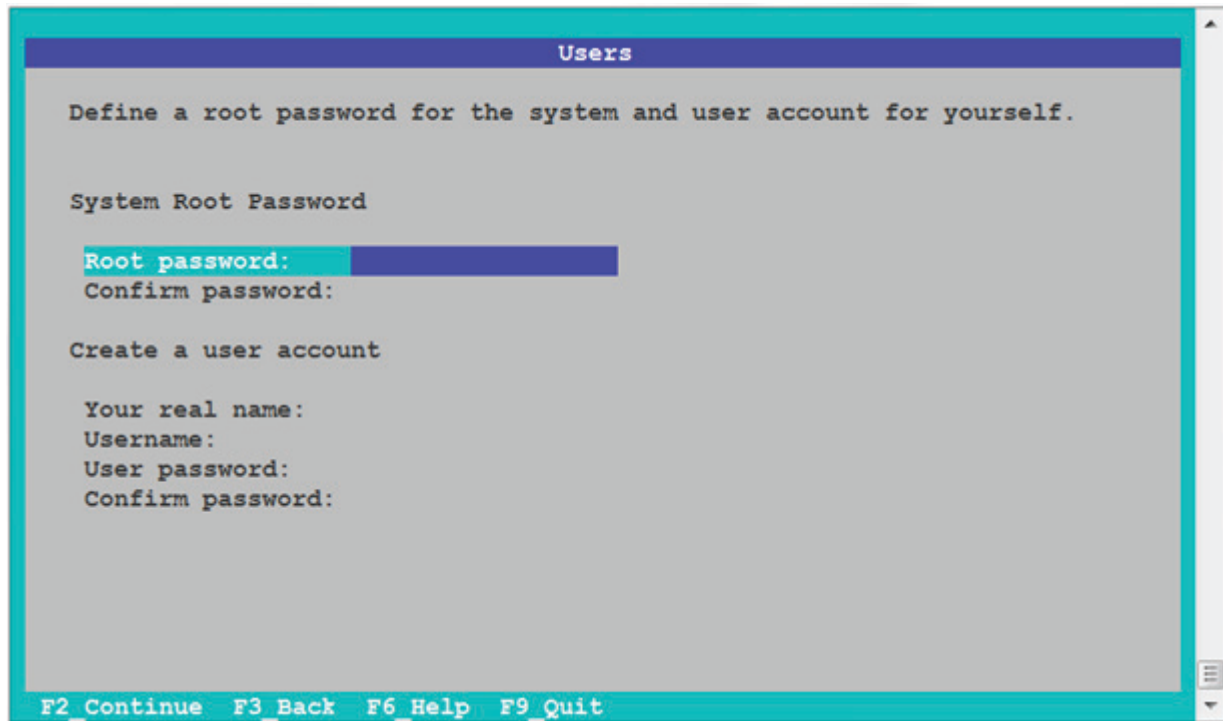
18. Select the applicable time zone and press the F2 key to continue. The following screen appears.

Figure 31 Date and Time Screen



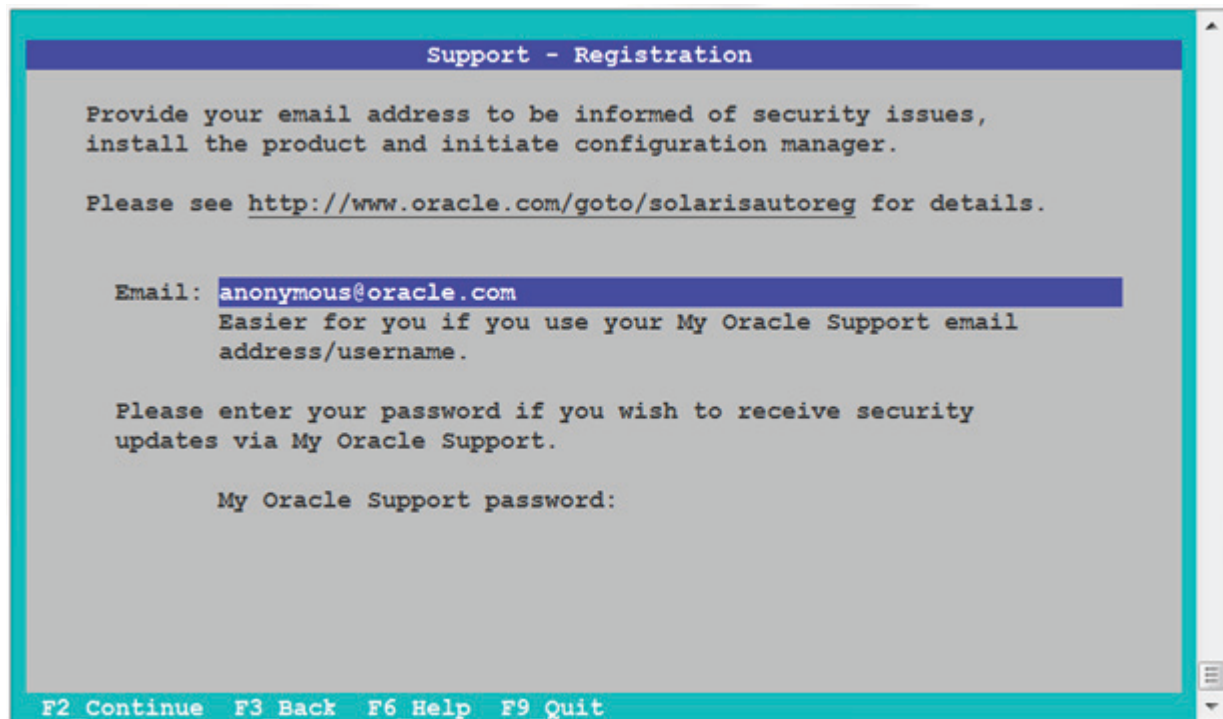
19. Enter the date and time and press the F2 key to continue. The following screen appears.

Figure 32 Users Screen



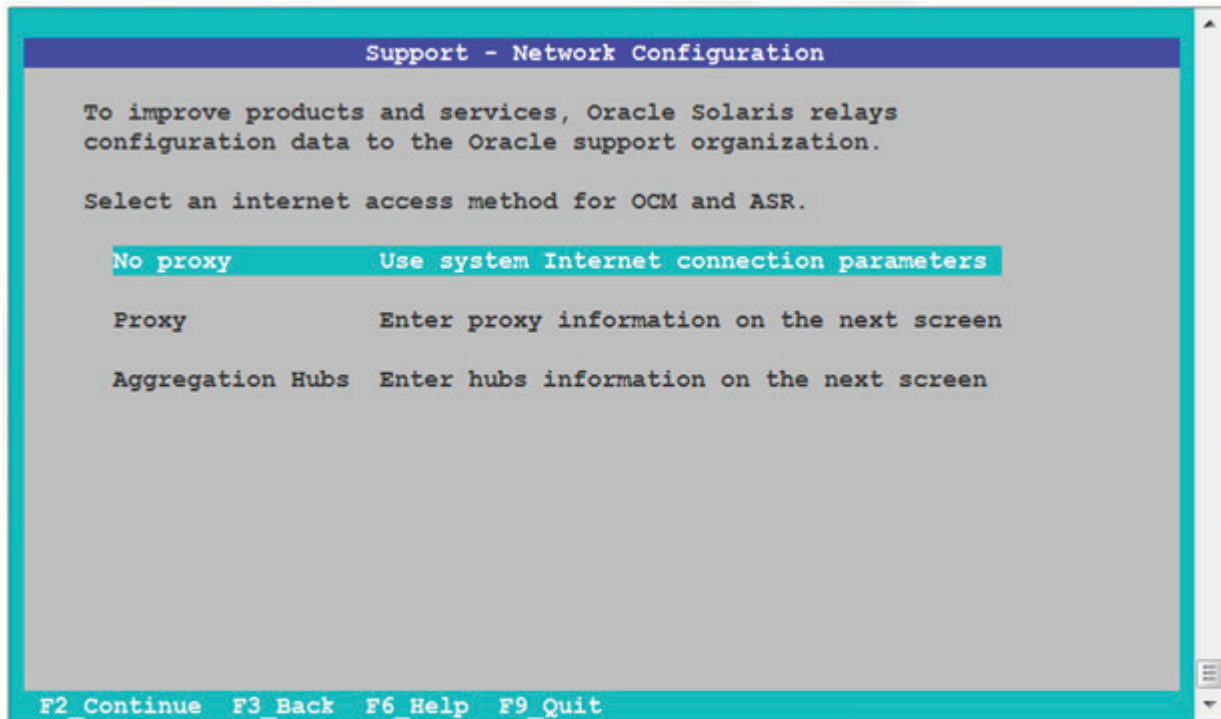
20. Create a root password for the system, create a user account, and press the F2 key to continue. The following screen appears.

Figure 33 Support – Registration Screen



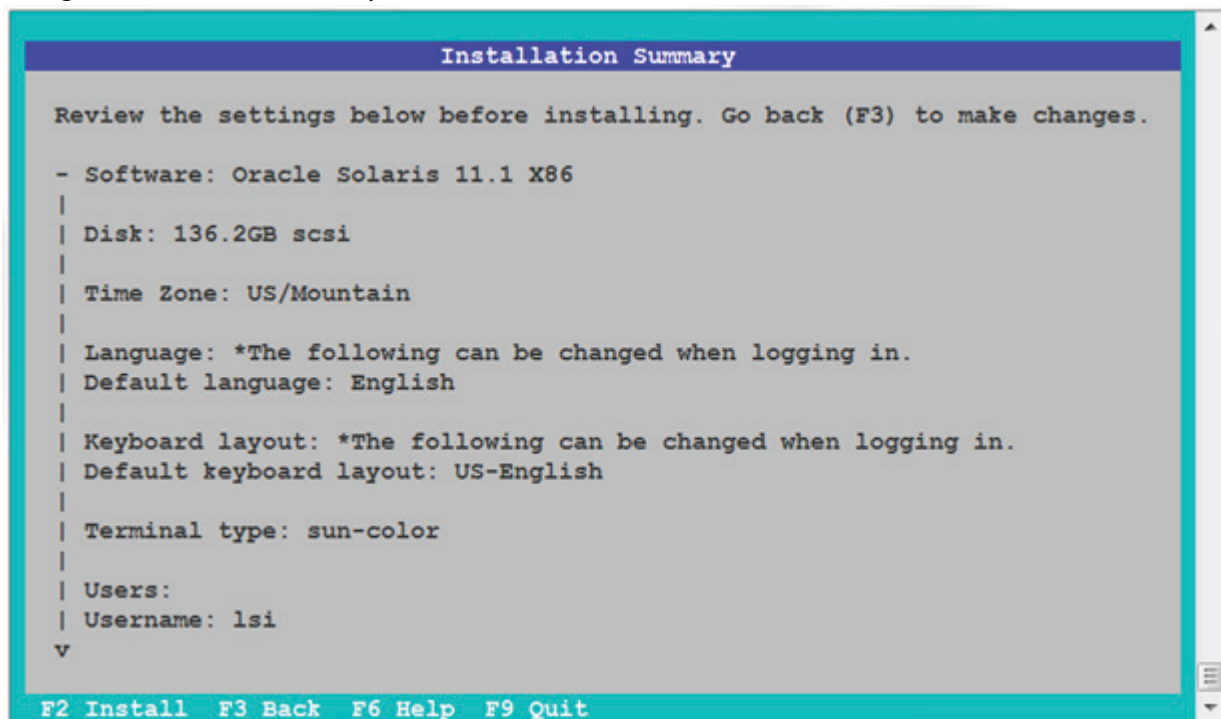
21. Enter your email address to be informed of security issues, install the product, and initiate the configuration manager; or, enter your Oracle Support password to receive security updates through My Oracle Support. Press the F2 key to continue. The following screen appears.

Figure 34 Support – Network Configuration Screen



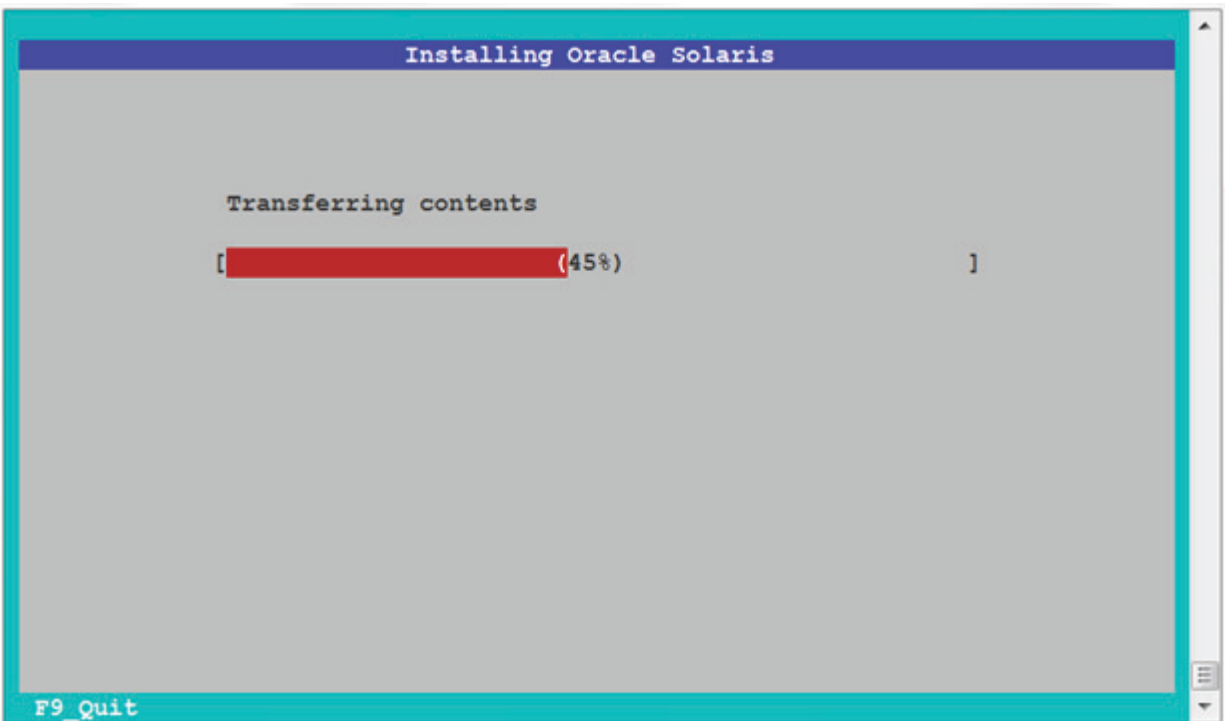
22. Select the applicable Internet access method for your network configuration and press the F2 key to continue. The following screen appears.

Figure 35 Installation Summary Screen



23. Press the F2 key to install the Oracle package; or Press the F3 key to go back to make changes. The following screen appears.

Figure 36 Installing Oracle Solaris Progress Screen



24. After OS has been installed, press F9 to go back to the **Options** menu.
25. Select Option 3 (Shell).
26. Type the following command to change the mountpoint for the Solaris dataset on the newly installed disk:

```
# zfs set mountpoint=/pool rpool/ROOT/solaris
```
27. Type the following command to mount that dataset:

```
# zfs mount rpool/ROOT/solaris
```
28. Edit the `/pool/etc/driver_aliases` file by adding the following line:

```
mr_sas "pciex1000,5d"
```
29. Type the following command to update the boot archive for the newly installed disk:

```
# bootadm update-archive -R /pool
```
30. Type the following command to unmount the root dataset:

```
# zfs umount rpool/ROOT/solaris
```
31. Type the following command to change that mountpoint back to its original value of `/`:

```
# zfs set mountpoint=/ rpool/ROOT/solaris
```

8.7 Installing or Upgrading the Driver Package after Operating System Installation

Perform the following procedure to install or upgrade the driver or package after the Solaris OS installation.

1. Become a superuser on your system.
2. Change the directory (command `cd`) to the directory where the Driver Package Update is, and type the following command:

```
# pkgadd -d .
```
3. At the following prompt, enter `y`.

Do you want to continue with the installation of <mrsas> [y,n,?]

The following message appears after a successful installation:

```
Installation of <mrsas> was successful.
```

If the installation is not successful, the following message appears:

```
Installation of <mrsas> was suspended (administration).
```

4. If the installation was successful, skip this step, and go to step 5. If the installation was not successful, remove the previously installed driver package, and then repeat step 3 to apply the drive package.

See [Section 8.8, Removing the Driver Package](#), for instructions on removing the previously installed driver package. Do not reboot.

5. Run the following commands to reconfigure while rebooting the machine:

```
# touch /reconfigure  
# reboot
```

6. At the next bootup, enter `b -r` as a boot option.

8.8 Removing the Driver Package

Four possible scenarios exist that you can use to remove the driver/package. Choose the one that applies.

1. Removing an existing Avago driver/package. See [Section 8.8, Removing the Driver Package](#).
2. Removing an inbox driver/package on Solaris10. See [Section 8.8.2, Removing an Inbox Driver/Package on the Solaris 10 OS](#) for the instructions.
3. Removing an inbox driver/package on Solaris11. See [Section 8.8.3, Removing an Inbox Driver/Package on the Solaris 11 Operating System](#) for the instructions.
4. Removing an inbox driver/package on Solaris11 (bootable Avago controller). See [Section 8.8.4, Removing an Inbox Driver/Package on the Solaris 11 Operating System \(Bootable Avago Controller\)](#) for the instructions.

NOTE If the controller is bootable controller, do not reboot after you remove the driver/package. Re-install the driver/package and then reboot.

8.8.1 Removing an Existing Driver Package

Perform the following procedure to remove the driver package.

1. Become a super-user on your system.
2. Check to see which MegaRAID driver package is installed on your system by using one of the following commands:

```
— # modinfo | grep mr_sas  
— # pkginfo -l | grep mrsas
```

3. If the Avago `mrsas` package is installed, remove the package by using the following command:

```
# pkgrm mrsas
```

The following messages appear on the console:

```
The following package is currently installed.  
mrsas Avago MegaRAID SAS 2.0 HBA driver...  
Do you want to remove this package?
```

4. Press `y` to remove the `mrsas` package.

The following messages appear.

```
## Removing Installed package instance <mrsas>
Do you want to continue with the removal of this package [y,n,?,q]
```

5. Press `y` to remove the `mrsas` package.
6. Run the following commands to reconfigure while rebooting the machine:

```
# touch /reconfigure
# reboot
```

7. At the next bootup, enter `b -r` as a boot option.

8.8.2 Removing an Inbox Driver/Package on the Solaris 10 OS

Perform the following procedure to remove the inbox driver/package on the Solaris 10 OS.

1. Become a super-user on your system.
2. Check to see which MegaRAID driver package is installed on your system by using one of the following commands:

```
— # modinfo | grep mr_sas
— # pkginfo -l | grep mrsas
```

3. If the `SUNWmrsas` package is installed, remove the package by using the following command:

```
# pkgrm SUNWmrsas
```

The following messages appear on the console:

```
The following package is currently installed.
mrsas Avago MegaRAID SAS 2.0 HBA driver...
Do you want to remove this package?
```

4. Press `y` to remove the `mrsas` package.

The following messages appear.

```
## Removing Installed package instance <mrsas>
Do you want to continue with the removal of this package [y,n,?,q]
```

5. Press `y` to remove the `mrsas` package.
6. Run the following commands to reconfigure while rebooting the machine:

```
# touch /reconfigure
# reboot
```

7. At the next bootup, enter `b -r` as a boot option.

8.8.3 Removing an Inbox Driver/Package on the Solaris 11 Operating System

Perform the following procedure to remove the inbox driver/package on the Solaris 11 OS.

1. Become a super-user on your system.

2. Check to see which MegaRAID driver package is installed on your system by using the following command:
— # modinfo | grep mr_sas
To find the inbox MegaRAID SAS package name, run the following commands:
— #pkg list | grep mr_sas
— driver/storage/mr_sas ----> inbox mr_sas IPS packagename
3. If the IPS package is installed, remove the package by using the following command:
pkg uninstall driver/storage/mr_sas
4. Press **y** to remove the `mrsas` package.
5. Run the following commands to reconfigure while rebooting the machine:
touch /reconfigure
reboot
6. At the next bootup, enter `b -r` as a boot option.

8.8.4 Removing an Inbox Driver/Package on the Solaris 11 Operating System (Bootable Avago Controller)

Perform the following procedure to remove the inbox driver/package on the Solaris 11 OS that is on a bootable Avago controller.

1. Become a super-user on your system.
2. Check to see which MegaRAID driver package is installed on your system by using the following command:
— # modinfo | grep mr_sas
To find the inbox MegaRAID SAS package name, run the following commands:
— #pkg list | grep mr_sas
— driver/storage/mr_sas ----> inbox mr_sas IPS packagename
3. If an inbox IPS package is installed, rename the inbox driver files using the following commands.
For x86 systems:
#mv kernel/drv/mr_sas /kernel/drv/mr_sas.inbox
#mv /kernel/drv/amd64/mr_sas /kernel/drv/amd64/mr_sas.inbox
#mv /kernel/drv/mr_sas.conf /kernel/drv/mr_sas.conf.inbox
For SPARC systems:
#mv /kernel/drv/sparcv9/mr_sas /kernel/drv/sparcv9/mr_sas.inbox
#mv /kernel/drv/mr_sas.conf /kernel/drv/mr_sas.conf.inbox
4. Continue with the instructions in [Section 8.7, Installing or Upgrading the Driver Package after Operating System Installation](#), to complete the installation of the Avago driver package.

8.9 Notes

The following are known limitations:

- The `mr_sas` driver is not loaded (attached) in the Solaris 10 Update 4 version when you use certain controllers. This issue is an OS limitation. This issue is fixed in Solaris 10-Update 5 and later.

- In the Solaris 11 OS, the action Install Time Update (ITU) of the driver is not supported. The Solaris 11 OS requires IPS packaging; it does not support the legacy Solaris 10 OS ITU install method.

Chapter 9: XenServer Driver Installation

This chapter describes how to install the XenServer 5.6 FP1 OS, XenServer 6.2 OS, and XenServer 6.5 OS.

NOTE The XenServer OS driver support is for 32-bit and 64-bit systems.

9.1 Creating a Driver Update Disk with a USB Drive

You can transfer a driver disk image to a USB drive with the rawrite tool from DOS®, or the dd utility in Linux. The URL for the rawrite tool is <http://www.tux.org/pub/dos/rawrite>. On a Linux machine, you can use the dd command to burn a driver ISO image on a USB drive.

Perform the following steps to create a driver update disk (DUD) with a USB drive.

1. Insert a USB stick into a Linux machine, making sure that the USB drive is not mounted.
2. Type the following command:

```
"$ dd if=<driver.iso> of=/dev/sdx"
```

Where /dev/sdx is the USB drive.

NOTE Make sure that you pick the correct DUD image from the Avago release bundle. The DUD image should match with the installed OS kernel version.

3. Press Enter.
4. Mount the USB stick to verify its contents.
5. Make sure the DUD image is in iso9660 format or MS-DOS format by typing the following command:

```
$df -T
```

6. Press Enter.
The file system type and other information about the mounted devices appear.

9.2 Installing the XenServer 6.x Operating System on Storage Managed by a MegaRAID Controller (Primary Storage)

This section describes how to set up the XenServer 6 OS on your host system. The Citrix® Server CD-ROM consists of XenServer and Client. You can use the XenServer CD-ROM to install the Client on a Windows-based system.

Avago distributes the Avago XenServer 6.2 and 6.5 drivers in an ISO image. You can update the drivers during the installation or you can update them when new drivers become available.

NOTE For primary storage, before you install the Avago driver, you must have your MegaRAID controller already installed in the system. Refer to the installation guide that came with your controller for the installation instructions. You can download the installation guide at <http://www.lsi.com/channel/ChannelDownloads>.

Perform the following steps to install the XenServer 6.2 or 6.5 OS driver at boot time on storage managed by a MegaRAID controller. This procedure contains additional actions for the XenServer 5.6 FP1OS in step 20.

1. Download the ISO image to install the Citrix XenServer OS.
2. Using the ISO image, perform the following steps to make a pen drive as a driver update disk (DUD).
 - a. Copy the ISO image.
 - b. Using the Linux command, type the following command in text mode:

```
dd if=image of=target
```

For example,

```
dd if=megaraid_sas-08.255.02.00-2.6.27.42-0.1.1.xs5.6.0.44.111158.iso of =/dev/sdb
```

Where /dev/sdb= pendrive location.

3. Boot the computer from the main installation CD.
4. For the DUD installation, select F9 from the initial boot screen.
5. Accept the End User License Agreement (EULA), then proceed.
The installer reads from the boot disk, and then loads several screens showing the MegaRAID SAS driver.
6. After you return to the initial boot screen, remove the pen drive, then proceed as normal.
After the initial boot messages, the installer does some hardware detection and initialization, then a screen appears that prompts you to select which keyboard key map you want to use for the installation.
7. Select the desired key map and choose **OK** to proceed.
8. Select the option to install or upgrade the XenServer OS, and choose **OK** to proceed.
The next screen displays a message stating that the setup program will install XenServer on the computer, and warning that the installation will overwrite data on any hard drives that you select to use for the installation.
9. Click **OK**.
The XenServer End User License Agreement (EULA) appears.
10. Click **Accept EULA**.
If you have multiple local hard disks, you are prompted to choose the primary disk for the installation.
11. Select the desired disk and click **OK** to proceed.
After you select the primary disk, you are prompted to choose whether you want any of the other drives to be formatted for use by the XenServer OS for VM storage.
12. Click **OK** to proceed.
The next screen prompts you to specify the source of the installation packages.
13. If you are installing from CD, select **Local media (CD-ROM)**.
The next screen prompts you to choose whether to verify the integrity of the installation media.
14. Click **Skip verification** to bypass verification of the installation media.
Verifying installation can take some time.
15. Click **OK** to proceed.
You are prompted to set a root password.
16. For network configuration, use the default setting and continue to press **OK**.
You are prompted to select the general geographical area for the time zone.
17. Choose the time zone from the displayed list of geographical areas, then click **OK** to proceed.
You are prompted to choose a method for setting the system time. The options are **Using NTP** or **Manual time**.
18. Select **Using NTP**.
You are prompted for the IP address and the gateway.
19. Use the default setting, and click **OK** to continue.
From this point forward, the installation begins to copy files to hard drive, and a progress bar appears.

20. For *Xenserver 5.6 FP1 installations only*, perform the following steps:

Towards the end of the installation process, the installer prompts you for any additional packages. The **megaraid_sas** driver RPM listed is listed as a selection.

- a. Before you select the **megaraid_sas** driver RPM, insert the pen drive into the USB slot, and then select **Accept** and continue as normal.
- b. After the installation completes, select **Reboot**.

The system now runs under the Citrix® Xenserver OS.

9.3 Installing or Updating the XenServer 6.2 or 6.5 Operating System Driver

Perform the following steps to install or update to the latest version of the MegaRAID SAS driver:

1. Boot the system.
2. Go to the Console (your terminal GUI).
3. Install the Dynamic Kernel Module Support (DKMS) driver RPM.
Uninstall the earlier version first, if needed.
4. Install the MegaRAID SAS driver RPM.
Uninstall the earlier version first, if needed.
5. Reboot the system to load the driver.

Chapter 10: Debian Driver Installation

This chapter describes how to install the device driver in Debian 7.x x64 operating systems.

10.1 Installing the Driver in a Debian 7.x Operating System

You can install the device driver in a new Debian 7.x system from the `.deb` package, which contains the executables, configuration files, libraries, and documentation in a Debian archive file.

Perform the procedures in this section if the Debian OS boots from a device that is not managed by a MegaRAID controller, but in which the MegaRAID controller is or will be present on the system and used to manage secondary storage.

For secondary storage, the driver must be added to the system; the driver is not in-box.

See [Section 5.1, Installing the Driver in a New Ubuntu Linux LTS OS](#), and follow the instructions to install the device driver in a new Debian 7.x OS.

Chapter 11: Oracle Enterprise Linux Driver Installation

To install the device driver in new Oracle® Enterprise Linux (OEL) 6.x and 7.x systems, or to update the driver on existing operating systems, see [Section 3, Red Hat Linux Driver Installation](#), and follow the instructions to install a new OEL system.

NOTE An optimized, single unified binary is provided for RHEL, CentOS, and OEL operating systems.

Chapter 12: Fedora Driver Installation

To install the device driver in new Fedora 19 and Fedora 20 systems, or to update the driver on existing operating systems, see [Section 3, Red Hat Linux Driver Installation](#), and follow the instructions to install a new Fedora system.

NOTE The Fedora OS does not support a driver update disk.

Chapter 13: CentOS Driver Installation

To install the device driver in the new CentOS 6.5, and CentOS 7.0 systems, or to update the driver on existing operating systems, see [Section 3, Red Hat Linux Driver Installation](#),

NOTE An optimized, single unified binary is provided for RHEL, CentOS, and OEL operating systems.

Chapter 14: OVM Driver Installation

To install the device driver in new OVM® 3.x and OVM 3.x.x systems, or to update the driver on existing operating systems, see [Section 3, Red Hat Linux Driver Installation](#), and follow the instructions to install new OVM 3.x and 3.x.x systems.

NOTE The OVM OS driver support is for 64-bit systems only.

NOTE The OVM OS does not support a driver update disk.

Appendix A: 240 VD Driver Support and Known Limitations

This appendix describes which drivers are supported and known limitations for the MegaRAID 6Gb/s SAS RAID controller and the MegaRAID 12Gb/s SAS RAID controller.

A.1 Operating System Driver Support

The following table describes the operating system (OS) driver support matrix for the MegaRAID 6Gb/s SAS RAID controller and the MegaRAID 12Gb/s SAS RAID controller.

Table 3 Operating System Support Matrix

OS Driver	Less than or Equal to 64 VD Support	240 VD Support
Windows	Yes	Yes
Linux	Yes	Yes
VMware (Native/Legacy)	Yes	Yes
Solaris	Yes	Yes
FreeBSD	Yes	Yes

A.2 Known Driver Limitations

No known limitations.

NOTE For the 240 VD feature to work, both the driver and the firmware must support the 240 VD feature. Otherwise, the driver exposes only the first 64 VDs.

Revision History

The following document changes were made.

Version and Date	Description of Changes
DB15-001203-03, September 8, 2015	<ul style="list-style-type: none"> ■ Updated the supported operating system versions. ■ Created Drivers and Operating Systems for locating drivers and their respective operating systems while installing MegaRAID drivers on the Windows platform.
DB15-001203-02, June 2015	Made some minor corrections in the OS support table and rereleased the document.
DB15-001203-01, June 2015	<ul style="list-style-type: none"> ■ Updated Section 1.1.1, Driver Functions. ■ Updated the supported operating system versions in Table 1, MegaRAID Device Driver Files, Driver RPMs Support, Driver ISO Support, and Driver Deb Package Support. ■ Added the new supported operating systems and removed the deprecated operating systems throughout the document. ■ Added Section 2.1.1.2, Creating Storage Configuration Using Ctrl-R.
DB15-001203-00, March 2015	<ul style="list-style-type: none"> ■ Added Section 8.6, Installing the Driver Package during Operating System Installation (Solaris 11.1 OS, x86 Only). ■ Added the 240 VD Driver Support and Known Limitations appendix. ■ Changed LSI references to Avago. ■ Minor rewrites for clarity and consistency.
80-00163-01 Rev. Q, November 2014	Updated the supported operating system versions.
80-00163-01 Rev. P, August 2014	<ul style="list-style-type: none"> ■ Updated template of the document. ■ Updated the supported operating system versions.
80-00163-01 Rev. O, June 2014	Updated the supported operating system versions.
80-00163-01 Rev. N, March 2014	<ul style="list-style-type: none"> ■ Added the FreeBSD, Debian, and CentOS operating systems. ■ Updated the operating system versions.
80-00163-01 Rev. M, February 2014	Updated the supported operating system versions.
80-00163-01 Rev. L, August 2013	Updated the supported operating system versions.
80-00163-01 Rev. K, May 2013	<ul style="list-style-type: none"> ■ Updated the supported operating system versions.
80-00163-01 Rev. J, April 2013	<ul style="list-style-type: none"> ■ Updated Table 1 in Chapter 1, the Solaris, Ubuntu, Solaris, XenServer, and OVM OS chapters, and the version number for various operating systems. ■ Added the Oracle Enterprise Linux chapter.
80-00163-01 Rev. I, February 2013	Updated the FreeBSD chapter and added the Oracle Enterprise Linux information.
80-00163-01 Rev. H, December 2012	Added the Debian 6.0 OS, OVM 3.0.3 OS, Fedora OS, and CentOS OS.
80-00163-01 Rev. G, September 2012	<ul style="list-style-type: none"> ■ Added the Microsoft Windows 8 operating system, Windows Server 2012 OS, Ubuntu Linux OS, and XenServer OS. ■ Updated the FreeBSD operating system.
80-00163-01 Rev. F, June 2012	Updated the operating system versions and the installation procedures.
80-00163-01 Rev. E, January 2011	Updated the user guide with the current versions of the operating systems.
80-00163-01 Rev. D, June 2009	Updated the procedure for installing the FreeBSD operating system.
80-00163-01 Rev. C, April 2009	Updated the Solaris 10 operating system information and driver file names.
80-00163-01 Rev. B, November 2008	Added installation instructions for the FreeBSD and Solaris 10 operating systems.
80-00163-01 Rev. A, August 2007	<ul style="list-style-type: none"> ■ Updated the installation procedures for the Windows, Red Hat Linux, and SUSE Linux operating systems to include the latest versions. ■ Added a chapter for the SCO® operating system.
DB15-000358-00, February 2006	Initial release of the document.

